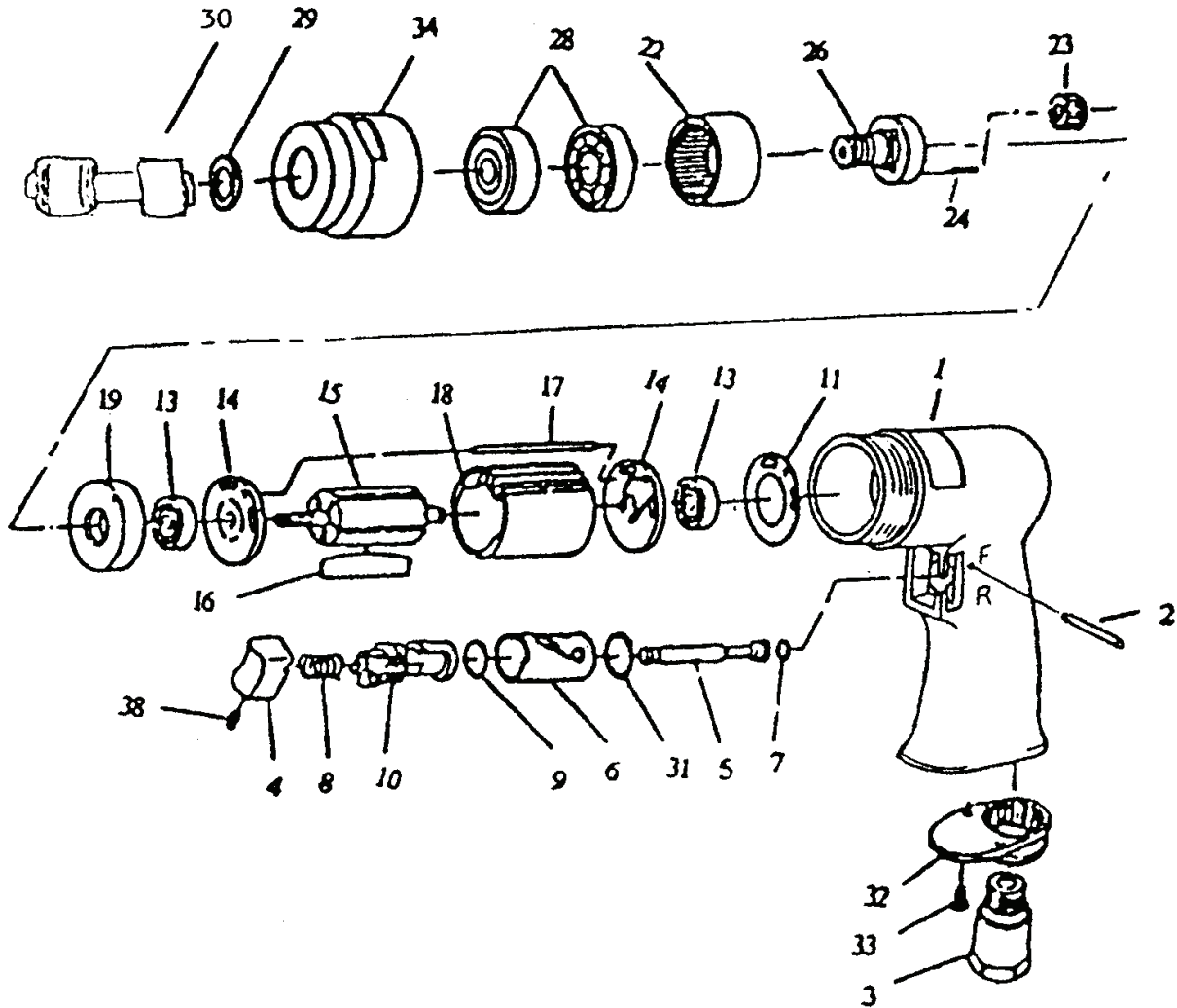


1101 STALL SCREWDRIVER

EXPLODED VIEW



PARTS LIST – FOR REFERENCE ONLY

| Index Number | Part Number | Description | Qty. | Index Number | Part Number | Description | Qty. | Index Number | Part Number | Description | Qty. |
|--------------|-------------|-----------------|------|--------------|-------------|---------------|------|--------------|-------------|----------------------|------|
| 1 | SM-72501 | Motor Housing | 1 | 11 | SM-72511 | Motor Gasket | 1* | 24 | SM-72524 | Pin | 3 |
| 2 | SM-72502 | Pin | 1 | 13 | SM-72513 | Ball Bearing | 2 | 26 | SM-72526 | Work Spindle | 1 |
| 3 | SM-72503 | Air Inlet | 1 | 14 | SM-72514 | End Plate | 2 | 28 | SM-72328 | Ball Bearing | 2 |
| 4 | SM-72504 | Trigger | 1 | 15 | SM-72515 | Rotor | 1 | 29 | SM-72529 | Chuck Spacer | 1 |
| 5 | SM-72505 | Valve Stem | 1 | 16 | SM-72516 | Rotor Blade | 5* | 30 | MQC-1-24 | Quick Change Coupler | 1 |
| 6 | SM-72506 | Reverse Bushing | 1 | 17 | SM-72517 | Pin | 1 | 31 | SM-72531 | O-Ring | 1* |
| 7 | SM-72507 | O-Ring | 1* | 18 | SM-72518 | Cylinder | 1 | 32 | SM-72532 | Exhaust Diffuser | 1 |
| 8 | SM-72508 | Valve Spring | 1* | 19 | SM-72519 | Spacer | 1 | 33 | SM-72533 | Screw | 2 |
| 9 | SM-72509 | O-Ring | 1* | 22 | SM-72522 | Internal Gear | 1 | 34 | SM-72534 | Clamp Nut | 1 |
| 10 | SM-72510 | Reverse Lever | 1 | 23 | SM-72523 | Planet Gear | 3 | 38 | SM-72538 | Set Screw | 1 |

TECHNICAL DATA

| | Max Air Pressure | Recommended Air Hose Size | RPM Free Speed | Max Air Flow CFM | Weight (lbs.) |
|--------------------------|------------------|---------------------------|----------------|------------------|---------------|
| 1101 (Formerly 2001A) | 90 psi | 3/8" | 1,800 | 16 | 3 |

FOOTNOTES

* Parts Available In Repair Kit 2001A-RK*

EAGLE

10000 SE Pine Street
Portland, OR 97216
503-254-6600
FAX 503-255-2615

When ordering spare parts, please specify tool type, part number and description.

REVISED 7/06