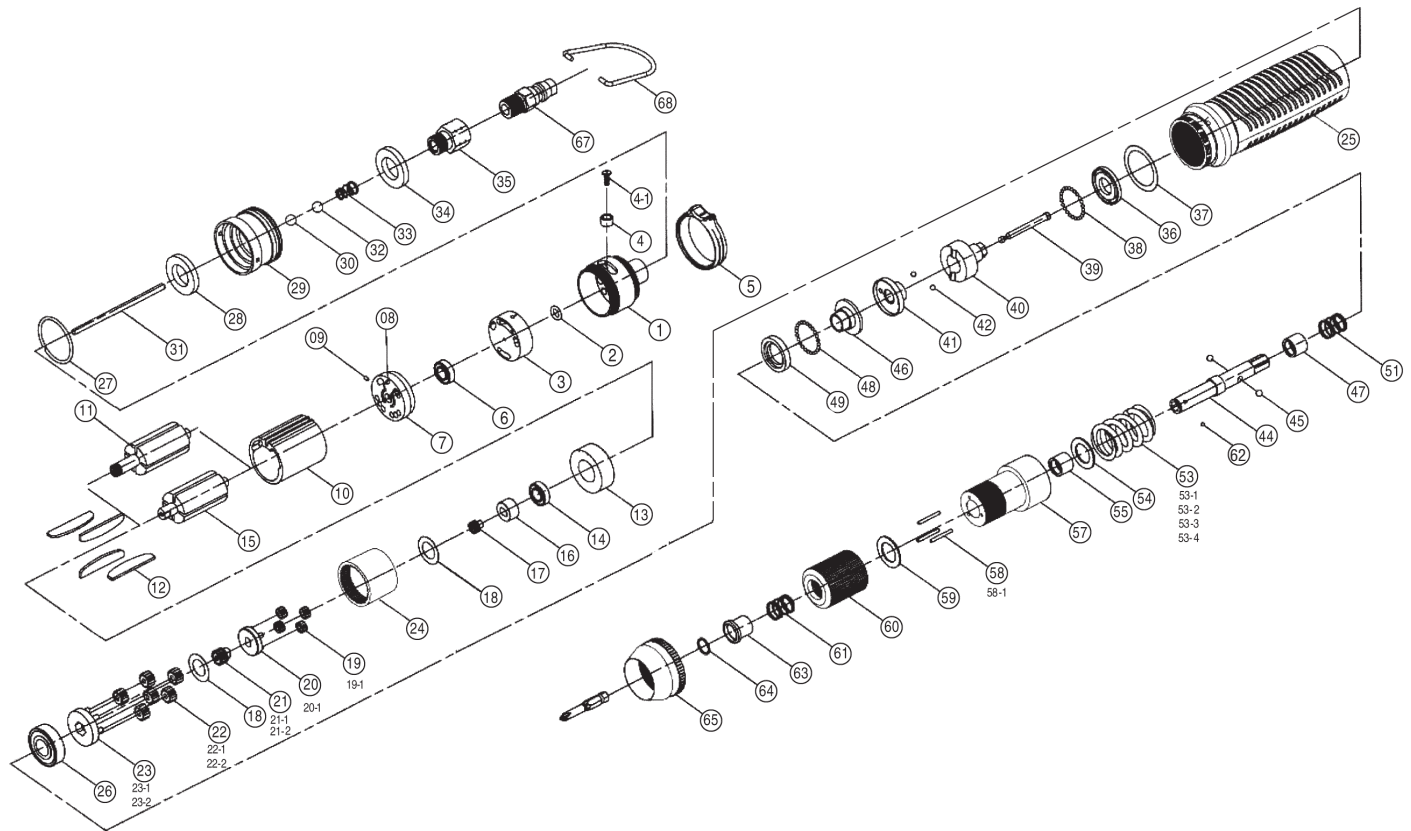


# 1320 AIR SCREWDRIVERS

## EXPLODED VIEW



## PARTS LIST — FOR REFERENCE ONLY

| Index Number | Part Number | Description          | Qty. | Index Number | Part Number | Description           | Qty. | Index Number | Part Number | Description              | Qty. |
|--------------|-------------|----------------------|------|--------------|-------------|-----------------------|------|--------------|-------------|--------------------------|------|
| 1            | 5A3030      | End Housing          | 1    | 25           | 5A3020      | Center Housing        | 1    | 47           | 3S2225      | Slide Base               | 1    |
| 2            | 2Q2001      | O Ring [P-7]         | 1    | 26           | 7S2003      | Ball Bearing [6901ZZ] | 1    | 48           | 7S2102      | Ball [2.0]               | 28   |
| 3            | 2P3000      | Valve                | 1    | 27           | 2Q2002      | O-Ring [28 x 1.5]     | 1    | 49           | 3S2230      | Ball Race                | 1    |
| 4            | 2U3001      | Switch Bushing       | 1    | 28           | 2P3010      | First Silencer        | 1    | 51           | 6N2110      | Spring [0.7x10.7x11.0]   | 1    |
| 4-1          | 7S2100      | Set Screw [M2.6 x 8] | 1    | 29           | 2A3010      | Exhaust Deflector     | 1    | 53-1         | 6N3002      | Torque Spring [1.8x21.5] | 1    |
| 5            | 2L3021      | Switch               | 1    | 30           | 7Q2005      | O-Ring [P7]           | 1    | 54           | 2S2120      | Washer [20x13.6]         | 1    |
| 6            | 7S2001      | Ball Bearing [624ZZ] | 1    | 31           | 6S2001      | Operating Rod         | 1    | 55           | 3S2240      | Anvil Bushing            | 1    |
| 7            | 1S3001      | End Plate            | 1    | 32           | 7S2101      | Ball [7.0] 1st gen.   | 1    | 57           | 3A2201      | Clutch Housing           | 1    |
| 8            | 7S2201      | Roll Pin [1.5 x 6]   | 1    | 33           | 6N2101      | Cone Spring           | 1    | 58           | 6S2010      | Needle Pin [2.0x18.8]    | 3    |
| 9            | 7S2201      | Roll Pin [1.5 x 6]   | 1    | 34           | 2P3020      | Second Silencer       | 1    | 59           | 3S3101      | Regulation Washer        | 1    |
| 10           | 1P3005      | Cylinder             | 1    | 35           | 2S2001      | Air Inlet Bushing     | 1    | 60           | 3A3030      | Torque Ring              | 1    |
| 11           | 1S3040      | Rotor                | 1    | 36           | 2S2101      | Washer [23.8 x 12.2]  | 1    | 60-1         | 3A3031      | Torque Ring              | 1    |
| 12           | 1P3050      | Blade                | 5    | 37           | 2S2103      | Washer                | 1    | 61           | 6N2003      | Spring [0.55x10.7x11.0]  | 1    |
| 13           | 1P3060      | Front Plate          | 1    | 38           | 7S2102      | Ball [2.0]            | 28   | 62           | 7S3107      | Ball [2.38 x 1/4" Hex]   | 1    |
| 14           | 7S2002      | Ball Bearing         | 1    | 39           | 3S2001      | Pilot Pin             | 1    | 62-1         | 7S3108      | Ball [3.0 x 5.0 Hex]     | 1    |
| 18           | 2S2261      | Washer               | 1    | 40           | 3S2210      | Rear Clutch           | 1    | 63           | 5S2001      | Bit Slide Sleeve         | 1    |
| 19           | 1P2101      | First Planet Gear    | 4    | 41           | 3S2215      | Center Clutch         | 1    | 64           | 6N2001      | Snap Ring                | 1    |
| 20           | 1P2280      | First Gear Cage      | 1    | 42           | 7S2112      | Ball [1/8]            | 2    | 65           | 5A3036      | Rear Housing             | 1    |
| 21           | 1P2270      | Second Main Gear     | 1    | 44           | 3S2021      | Anvil [6.35Hex]       | 1    | 67           | 2U2001      | Air Hose Nipple          | 1    |
| 22           | 1P2110      | Second Planet Gear   | 4    | 44-1         | 3S2022      | Anvil [5.0Hex]        | 1    | 68           | 5N2001      | Suspension Ring          | 1    |
| 23           | 1P2284      | Second Gear Cage     | 1    | 45           | 7S2105      | Ball [4.0]            | 2    |              |             |                          |      |
| 24           | 1S2061      | Internal Gear        | 1    | 46           | 3S2220      | End Clutch            | 1    |              |             |                          |      |



10000 SE Pine Street  
Portland, OR 97216  
503-254-6600  
FAX 503-255-2615

When ordering spare parts, please specify  
tool type, part number and description.

AIMCO offers a complete line of Tool Support products.  
Visit our website at [www.aimco-global.com](http://www.aimco-global.com)