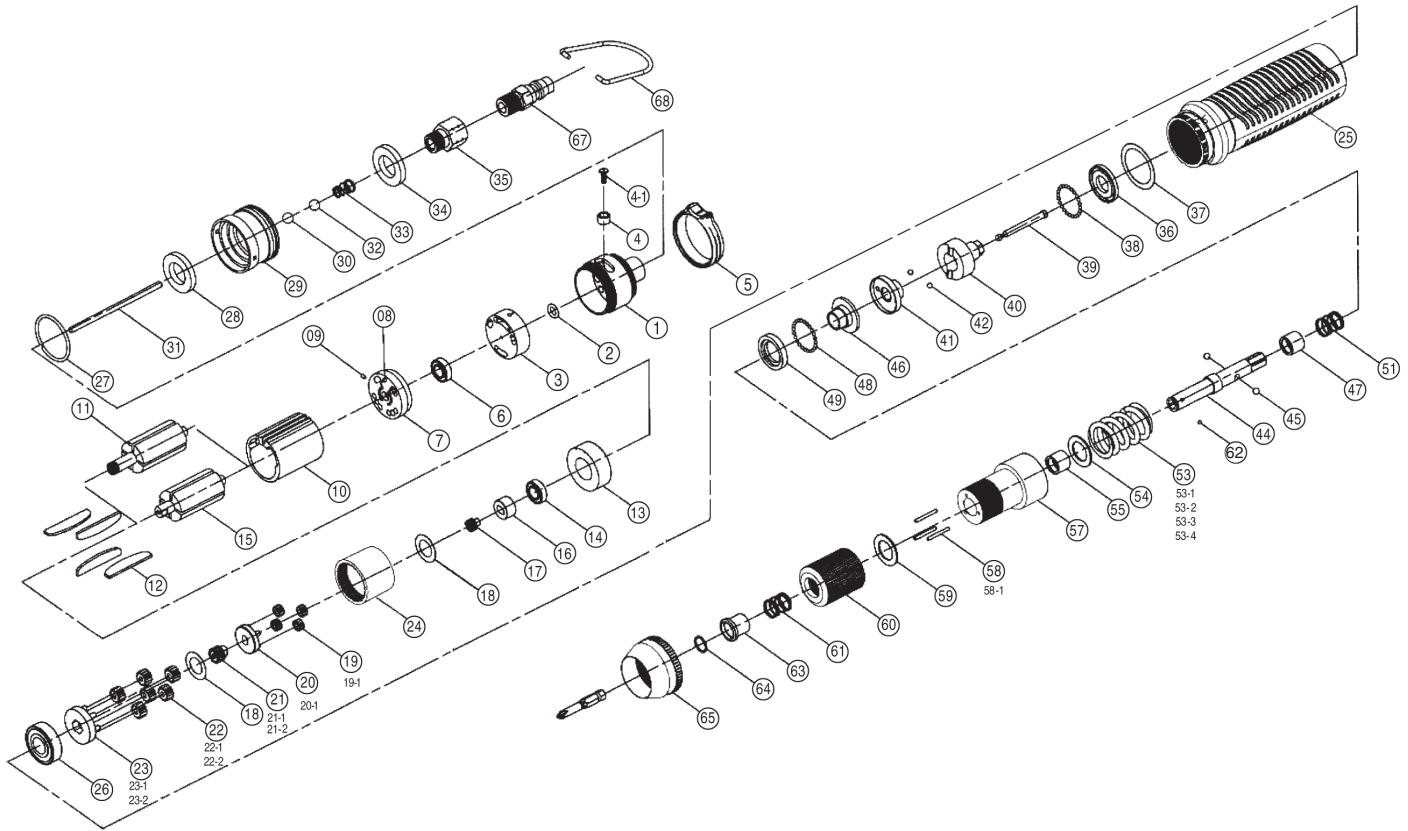


1330 AIR SCREWDRIVERS

EXPLODED VIEW



PARTS LIST — FOR REFERENCE ONLY

Index Number	Part Number	Description	Qty.	Index Number	Part Number	Description	Qty.	Index Number	Part Number	Description	Qty.
1	5A3030	End Housing	1	24	1S2061	Internal Gear	1	46	3S2220	End Clutch	1
2	2Q2001	O Ring [P-7]	1	25	5A3020	Center Housing	1	47	3S2225	Slide Base	1
3	2P3000	Valve	1	26	7S2003	Ball Bearing [6901ZZ]	1	48	7S2102	Ball [2.0]	28
4	2U3001	Switch Bushing	1	27	2Q2002	O-Ring [28 x 1.5]	1	49	3S2230	Ball Race	1
4-1	7S2100	Set Screw [M2.6 x 8]	1	28	2P3010	First Silencer	1	51	6N2110	Spring [0.7x10.7x11.0]	1
5	2L3021	Switch	1	29	2A3010	Exhaust Deflector	1	53-2	6N3013	Torque Spring [2.3x21.5]	1
6	7S2001	Ball Bearing [624ZZ]	1	30	7Q2005	O-Ring [P7]	1	53-2-1	6N3003	Torque Spring [2.2x21.5]	1
7	1S3001	End Plate	1	31	6S2001	Operating Rod	1	54	2S2120	Washer [20x13.6]	1
8	7S2201	Roll Pin [1.5 x 6]	1	32	7S2101	Ball [7.0] 1st gen.	1	55	3S2240	Anvil Bushing	1
9	7S2201	Roll Pin [1.5 x 6]	1	33	6N2101	Cone Spring	1	57	3A2201	Clutch Housing	1
10	1P3005	Cylinder	1	34	2P3020	Second Silencer	1	58	6S2010	Needle Pin [2.0x18.8]	3
12	1P3050	Blade	5	35	2S2001	Air Inlet Bushing	1	59	3S3101	Regulation Washer	1
13	1P3060	Front Plate	1	36	2S2101	Washer [23.8 x 12.2]	1	60	3A3030	Torque Ring	1
14	7S2002	Ball Bearing	1	37	2S2103	Washer	1	60-1	3A3031	Torque Ring	1
15	1S3043	Rotor	1	38	7S2102	Ball [2.0]	28	61	6N2003	Spring [0.55x10.7x11.0]	1
16	1S2050	Connect	1	39	3S2001	Pilot Pin	1	62	7S3107	Ball [2.38 x 1/4" Hex]	1
17	1P2270	First Main Gear	1	40	3S2210	Rear Clutch	1	62-1	7S3108	Ball [3.0 x 5.0 Hex]	1
18	2S2261	Washer	1	41	3S2215	Center Clutch	1	63	5S2001	Bit Slide Sleeve	1
19-1	1P2110	First Planet Gear	4	42	7S2112	Ball [1/8]	2	64	6N2001	Snap Ring	1
20-1	1P3274	First Gear Cage w Gear	1	44	3S2021	Anvil [6.35Hex]	1	65	5A3036	Rear Housing	1
22	1P2110	Second Planet Gear	4	44-1	3S2022	Anvil [5.0Hex]	1	67	2U2001	Air Hose Nipple	1
23	1P2284	Second Gear Cage	1	45	7S2105	Ball [4.0]	2	68	5N2001	Suspension Ring	1



10000 SE Pine Street
Portland, OR 97216
503-254-6600
FAX 503-255-2615

When ordering spare parts, please specify
tool type, part number and description.

AIMCO offers a complete line of Tool Support products.
Visit our website at www.aimco-global.com