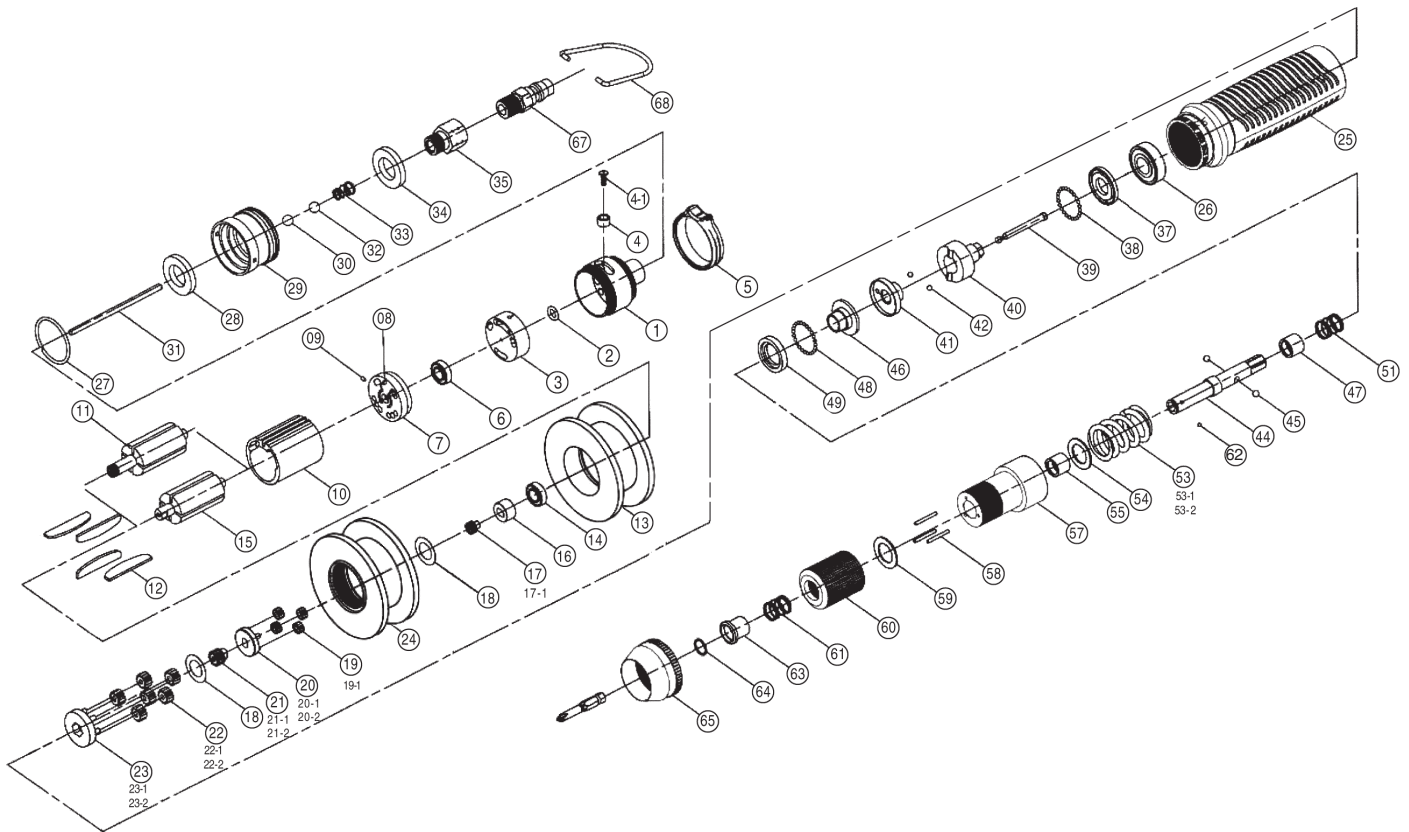


# 1355 AIR SCREWDRIVERS

## EXPLODED VIEW



## PARTS LIST — FOR REFERENCE ONLY

Index Number	Part Number	Description	Qty.	Index Number	Part Number	Description	Qty.	Index Number	Part Number	Description	Qty.
1	5A6030	End Housing	1	24	1S6061	Internal Gear	1	48	7S2102	Ball [2.0]	28
2	2Q5001	O Ring [P-10]	1	25	5A6033	Center Housing	1	49	3S5230	Ball Race	1
3	2P6000	Valve	1	26	7S6003	Ball Bearing [6001ZZ]	1	51	6N5110	Spring [0.8x10.1x16.0]	1
4	2U6001	Switch Bushing	1	27	2Q2002	O-Ring [28x1.5]	1	53-1	6N5002	Torque Spring [3.6x35]	1
4-1	7S2100	Set Screw [M2.6x8]	1	28	2P3020	First Silencer	1	54	2S5120	Washer [22.2x13.6]	1
5	2L6021	Switch	1	29	2A6010	Exhaust Deflector	1	55	3S2240	Anvil Bushing	1
6	7S5001	Ball Bearing [697ZZ]	1	30	7Q2005	O-Ring [P-7]	1	57	3A5220	Clutch Housing	1
7	1S6001	End Plate	1	31	6S6001	Operating Rod	1	58-1	6S2011	Needle Pin [2.0X17.8]	3
8	7S5201	Roll Pin [2.0x4]	1	32	7S2101	Ball [7.0] 1st gen.	1	59	3S3101	Regulation Washer	1
9	7S5201	Roll Pin [2.0x4]	1	33	6N2101	Cone Spring	1	60	3A6030	Torque Ring	1
10	1P6005	Cylinder	1	34	2P3020	Second Silencer	1	60-1	3A6031	Torque Ring	1
12	1P6050	Blade	5	35	2S6003	Air Inlet Bushing	1	61	6N2103	Spring [0.6x10.1x11.0]	1
13	1P6060	Front Plate	1	37	2S6102	Washer	28	62	7S3107	Ball [2.38-6.35 Hex]	1
14	7S2002	Ball Bearing [688ZZ]	1	38	7S2102	Ball [2.0]	1	62-1	7S3108	Ball [3.00-5.0 Hex]	1
15	1S6043	Rotor	1	39	3S5001	Pilot Pin	1	63	5S2001	Bit Slide Sleeve	1
16	1S3050	Connect	1	40	3S5210	Rear Clutch	1	64	6N2001	Snap Ring	1
17-1	1P5101	First Main Gear	1	41	3S5215	Center Clutch	1	65	5A6036	Rear Housing	1
18	2S2261	Washer	1	42	7S2112	Ball [1/8]	2	67	2U2001	Air Hose Nipple	1
19-1	1P2130	First Planet Gear	4	44	3S5021	Anvil [6.35 Hex]	1	68	5N2001	Suspension Ring	1
20-1	1P2290	First Planet Cage	1	44-1	3S5022	Anvil [5.0 Hex]	1				
21-1	1G6090	Second Main Gear	1	45	7S2105	Ball [4.0]	2				
22-1	1P6130	Second Main Gear	4	46	3S5220	End Clutch	1				
23-1	1P6288	First Planet Cage	1	47	3S2225	Slide Base	1				



10000 SE Pine Street  
Portland, OR 97216  
503-254-6600  
FAX 503-255-2615

When ordering spare parts, please specify  
tool type, part number and description.

AIMCO offers a complete line of Tool Support products.  
Visit our website at [www.aimco-global.com](http://www.aimco-global.com)