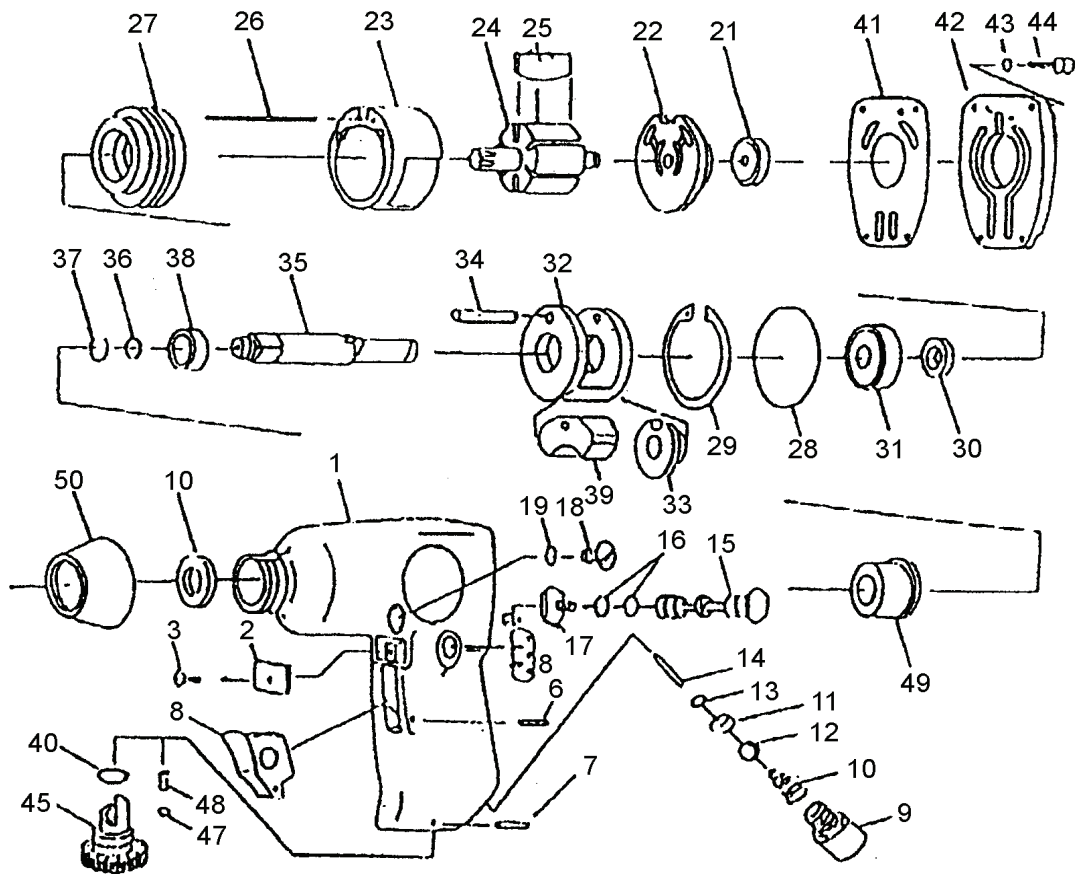


# 2003 3/8" ANGLE HEAD IMPACT WRENCH

## EXPLODED VIEW



## PARTS LIST – FOR REFERENCE ONLY

Index Number	Part Number	Description	Qty.	Index Number	Part Number	Description	Qty.	Index Number	Part Number	Description	Qty.
1	106501	Motor Housing	1	18	106518	Plug	1	35	106535	Anvil Shank	1
2	106502	Deflector	1	19	106519	O-Ring	2*	36	106536	Socket O-Ring	1*
3	106503	Screw	1	21	106521	Ball Bearing	1	37	106537	Socket Retainer	1
5	106505	Pin	1	22	106522	Rear End Plate	1	38	106538	Hammer Cage Spacer	1
6	106506	Trigger	1	23	106523	Cylinder	1	39	106539	Hammer Dog	1
7	106507	Pin	1	24	106524	Rotor	1	40	106540	Oil Seal	1
8	106508	Reverse Lever	1	25	106525	Rotor Blade	6*	41	106541	Motor Gasket	1*
9	106509	Hose Adapter	1	26	106526	Dowel Pin	1	42	106542	Housing Cap	1
10	106510	Throttle Valve Spring	1*	27	106527	Front End Plate	1	43	106543	Washer	4
11	106511	O-Ring Retainer	1*	28	106528	O-Ring	1*	44	106544	Cap Screw	4
12	106512	Steel Ball	1	29	106529	Retaining Ring	1	45	106545	Air Regulator	1
13	106513	O-Ring	1*	30	106530	Oil Seal	1*	46	106546	O-Ring	1*
14	106514	Valve Pin	1*	31	106531	Ball Bearing	1	47	106547	Steel Ball	1
15	106515	Reverse Valve	1	32	106532	Hammer Cage	1	48	106548	Regulator Spring	1
16	106516	O-Ring	2*	33	106533	Drive Cam	1	49	106549	Spindle Bush	1
17	106517	Reverse Valve Screw	1	34	106534	Hammer Pin	1	50	106550	Rubber Nose Guard	1

### TECHNICAL DATA

	Max Air Pressure	Recommended Air Hose Size	RPM Free Speed	Max Air Flow CFM	Weight (lbs.)
2003 (Formerly 1003)	90 psi	3/8"	9,000	10	1.9

### FOOTNOTES

\* Parts Available in Repair Kit 1003-RK\*

# EAGLE

10000 SE Pine Street  
Portland, OR 97216  
503-254-6600  
FAX 503-255-2615

When ordering spare parts, please specify tool type, part number and description.

REVISED 7/06