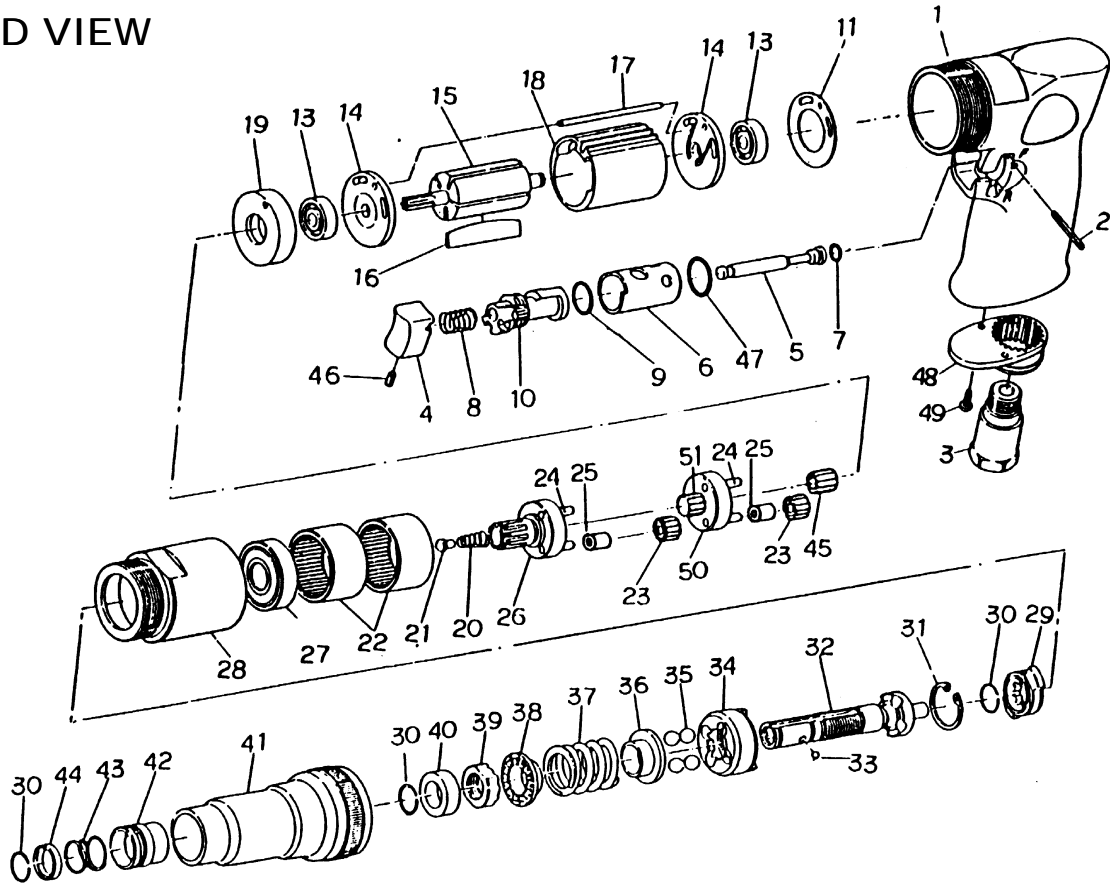


2009 ADJUSTABLE CLUTCH SCREWDRIVER

EXPLODED VIEW



PARTS LIST – FOR REFERENCE ONLY

Index Number	Part Number	Description	Qty.	Index Number	Part Number	Description	Qty.	Index Number	Part Number	Description	Qty.
1	80301	Housing	1	19	80319	Spacer	1	36	80336	Washer	1
2	80302	Pin	1	20	80320	Spring	1 *	37	80337	Spring	1
3	80303	Air Inlet	1	21	80321	Spring Guide	1	38	80338	Washer	1
4	80304	Trigger	1	22	80322	Internal Gear	2	39	80339	Adjust Nut	1
5	80305	Valve Stem	1	23	80323	Planet Gear	6	40	80340	Spacer	1
6	80306	Reverse Bushing	1	24	80324	Pin	6	41	80341	Clutch Housing	1
7	80307	O-Ring	1	25	80325	Spacer	6	42	80342	Ball Retainer	1
8	80308	Valve Spring	1 *	26	80326	Work Spindle	1	43	80343	Spring	1 *
9	80309	O-Ring	1 *	27	80327	Ball Bearing	1	44	80344	Washer	1
10	80310	Reverse Lever	1	28	80328	Clamp Nut	1	45	80345	Pinion Gear	1
11	80311	Motor Gasket	1	29	80329	Drive Dog	1	46	80346	Set Screw	1
13	80313	Ball Bearing	2	30	80330	Retaining Ring	3 *	47	80347	O-Ring	1 *
14	80314	End Plate	2	31	80331	Retaining Ring	1	48	80348	Exhaust Diffuser	1
15	80315	Rotor	1	32	80332	Cam Spindle	1	49	80349	Screw	2
16	80316	Rotor Blades	5 *	33	80333	Steel Ball	1	50	80350	Reduction Spindle	1
17	80317	Pin	1	34	80334	Clutch Carrier	1	51	80351	Center Gear	1
18	80318	Cylinder	1	35	80335	Steel Ball	4				

TECHNICAL DATA

	Max Air Pressure	Recommended Air Hose Size	RPM Free Speed	Max Air Flow CFM	Weight (lbs.)
2009	90 psi	3/8"	800	16	2.5

FOOTNOTES

* Parts Available In Repair Kit 2009-RK*



When ordering spare parts, please specify tool type, part number and description

10000 SE PINE, PORTLAND, OR 97216
503-254-1749 FAX 503-256-4026

REVISED 7/99