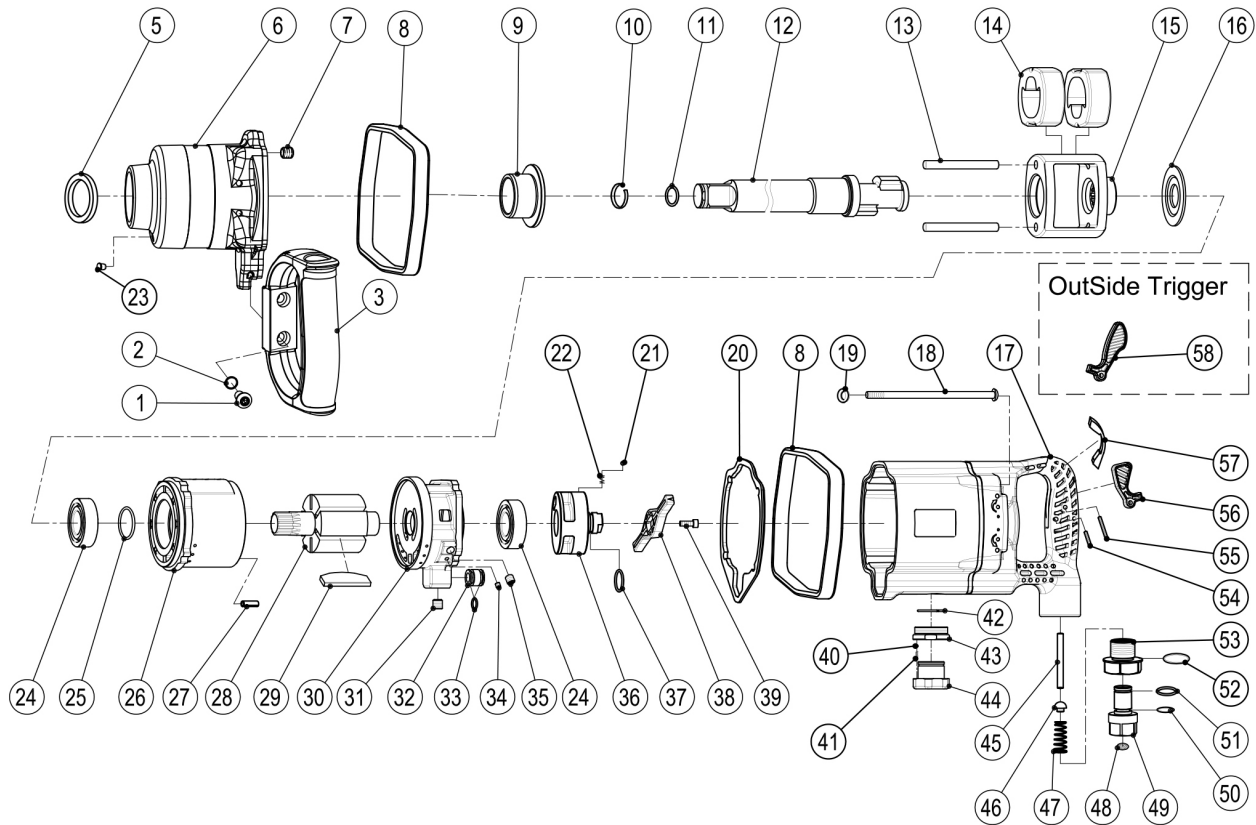


# 2403L IMPACT WRENCH

## EXPLODED VIEW



### PARTS LIST — FOR REFERENCE ONLY

Index Number	Part Number	Description	Qty.	Index Number	Part Number	Description	Qty.	Index Number	Part Number	Description	Qty.
1	2403L-1	Cap Screw M6 x 12	2	28	2403L-28	Rotor	1	55	2403L-55	Spring Pin 4 x 28	1
2	2403L-2	Washer (6)	2	30	2403L-30	Rear End Plate	1	56	2403L-56	Inside Trigger	1
3	2403L-3	Handle	1	31	2403L-31	Set Screw M10 x P1 x 10	1	57	2403L-57	Trigger Band (Outside Trigger)	1
5	2403L-5	Oil Seal 50 x 38 x 6	1	32	2403L-32	Sealing Bushing	1	58	2403L-58	Outside Trigger	1
6	2403L-6	Hammer Case	1	34	2403L-34	Set Screw M5 x 5	2		2403L-RK	Repair Kit	1
7	2403L-7	Helicoil Insert M8 x 2.5D	4	35	2403L-35	Set Screw M10 x P1.5 x 8	2			(parts available in kit only)	
8	2403L-8	End Band	2	36	2403L-36	Reverse Valve	1	10		Retainer Ring	1
9	2403L-9	Bushing	1	38	2403L-38	Regulator Valve Knob	1	11		O-Ring 18 x 2.5	1
12	2403L-12	Anvil	1	39	2403L-39	Cap Screw M6 x 20	1	20		Rubber Sealing Washer	1
13	2403L-13	Hammer Pin	2	40	2403L-40	Steel Ball 3 mm	1	24		Ball Bearing 6205Z	2
14	2403L-14	Hammer	2	41	2403L-41	Spring	1	25		O-Ring 25 x 3	1
15	2403L-15	Hammer Cage	1	42	2403L-42	Snap Ring	1	29		Rotor Blade	6
16	2403L-16	Rear Washer	1	43	2403L-43	Deflector Sleeve	1	33		O-Ring 12.5 x 2.5	2
17	2403L-17	Housing	1	44	2403L-44	Exhaust Deflector	1	37		O-Ring 16 x 2.5	1
18	2403L-18	Screw M8 x 145	4	45	2403L-45	Valve Stem	1	47		Throttle Spring	1
19	2403L-19	Washer 8 x 16 x 1.5	4	46	2403L-46	Air Closer	1	50		O-Ring 13 x 2.5	1
21	2403L-21	Steel Ball 4 mm	1	48	2403L-48	Filter Net 1/2	1	52		O-Ring 22 x 2	1
22	2403L-22	Spring	1	49	2403L-49	Rotatable Air Inlet	1				
23	2403L-23	1/4" Grease Fitting	1	51	2403L-51	Snap Ring	1				
26	2403L-26	Cylinder	1	53	2403L-53	Air Inlet Bushing	1				
27	2403L-27	Spring Pin 3 x 6	1	54	2403L-54	Spring Pin 4 x 22	1				

### FOOTNOTES

**EAGLE GROUP**  
A Division of AIMCO

10000 SE PINE  
PORTLAND, OR 97216  
503-254-6600  
FAX 503-255-2615

When ordering spare parts, please specify tool type, part number, and description