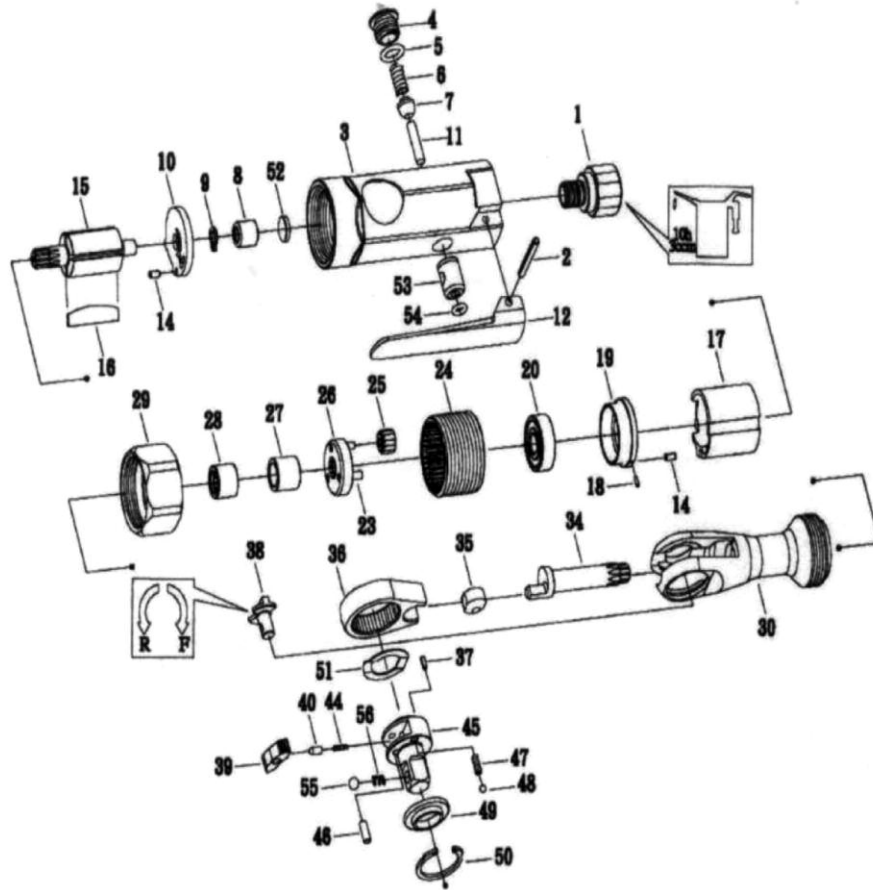


# 3115 1/4" RATCHET WRENCH

## EXPLODED VIEW



### PARTS LIST — FOR REFERENCE ONLY

Index Number	Part Number	Description	Qty.	Index Number	Part Number	Description	Qty.	Index Number	Part Number	Description	Qty.
1	3115-1	Inlet Bushing	1	20	3115-20	Bearing	1	46	3115-46	Pin	1
2	3115-2	Lever Pin	1	23	3115-23	Idler Gear Pin	3	47	3115-47	Spring	2
3	3115-3	Motor Housing (Incl. 8.52.53,54)	1	24	3115-24	Internal Gear	1	48	3115-48	Steel Ball	2
4	3115-4	Valve Screw	1	25	3115-25	Idler Gaer	3	49	3115-49	Thrust Washer	1
5	3115-5	O-Ring	1	26	3115-26	Idler Gaer Plate	1	50	3115-50	Retaining Ring	1
6	3115-6	Valve Spring	1	27	3115-27	Spacer	1	51	3115-51	Washer	1
7	3115-7	Throttle Valve	1	28	3115-28	Needle Bearing	1	52	3115-52	Housing Plate	1
8	3115-8	Bearing	1	29	3115-29	Clamp Nut	1	53	3115-53	RequI Ating Valve	1
9	3115-9	Rotor Retainer	1	30	3115-30	Ratchet Housing	1	54	3115-54	O-Ring	1
10	3115-10	Rear Plate (Incl.14)	1	34	3115-34	Crank Shaft	1	55	3115-55	Steel Ball	1
11	3115-11	Valve Pin	1	35	3115-35	Drive Bushing	1	56	3115-56	Spring	1
12	3115-12	Throttle Lever	1	36	3115-36	Yoke	1				
14	3115-14	Pin	2	37	3115-37	Pin	1	RK	Repair Kit Includes Illustrated Parts 37.38,39,40,44.45,46.47.48,49,50,51		
15	3115-15	Rotor	1	38	3115-38	Reverse Button	1				
16	3115-16	Rotor Blade	4	39	3115-39	Ratchet Pawl	1	TK	Tune-Up Kit Includes Illustrated Parts 5,6,7,9,16(4),40		
17	3115-17	Cylinder	1	40	3115-40	Lock Pin	1				
18	3115-18	Pin	1	44	3115-44	Spring	1				
19	3115-19	Front Plate (Incl.14,18)	1	45	3115-45	1/4"-3/8" Anvil (Incl.37.55.56)	1				

#### FOOTNOTES

10000 SE Pine Street  
Portland, OR 97216  
503-254-6600  
FAX 503-255-2615

When ordering spare parts, please specify  
tool type, part number and description.