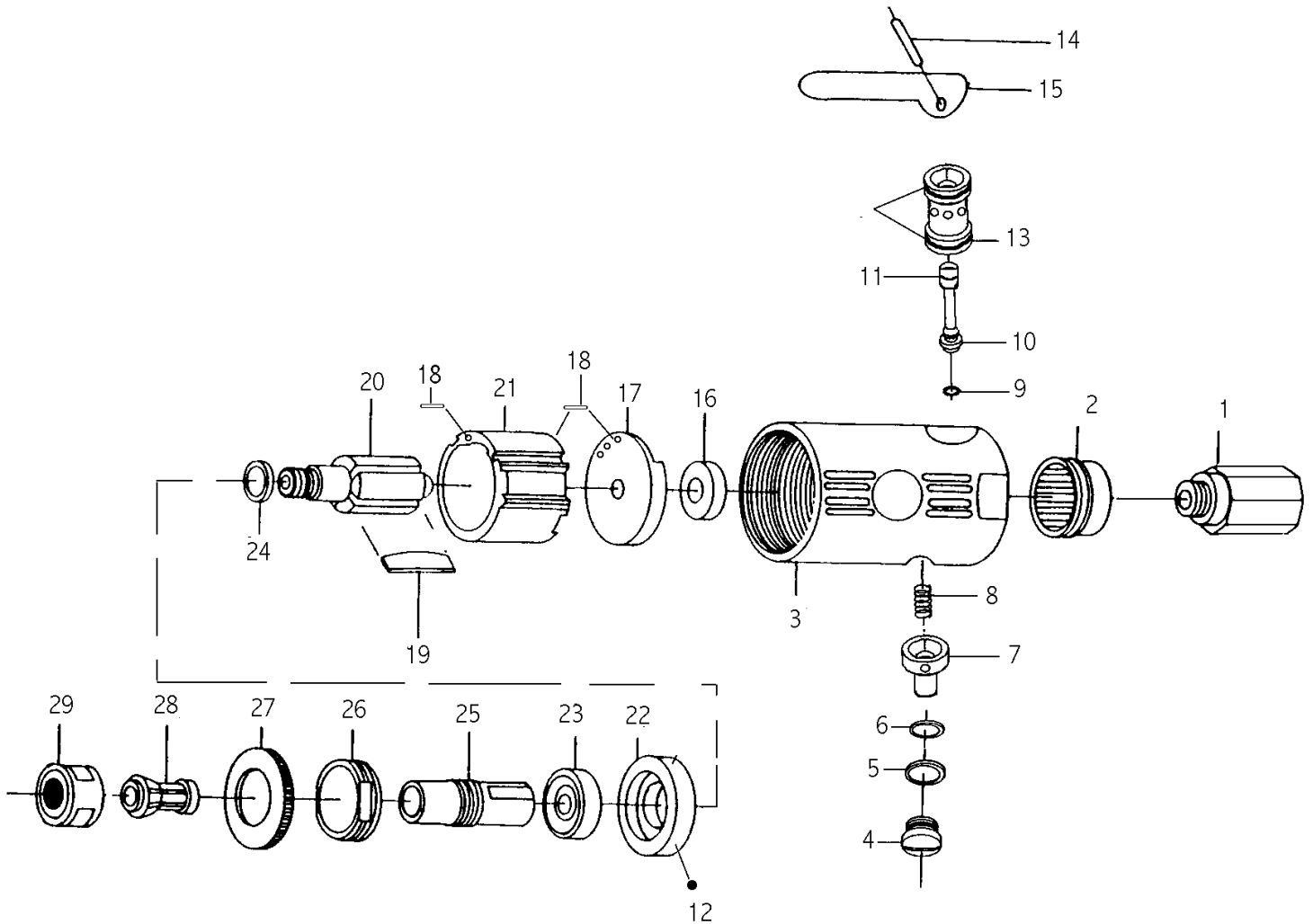


5002A DIE GRINDER

EXPLODED VIEW



PARTS LIST – FOR REFERENCE ONLY

Index Number	Part Number	Description	Qty.	Index Number	Part Number	Description	Qty.	Index Number	Part Number	Description	Qty.
1	5002A-01	Inlet Bushing	1	11	5002A-11	O-Ring	1*	21	5002A-21	Cylinder	1
2	5002A-02	Exhaust Deflector	1	12	5002A-12	Ball	1	22	5002A-22	Front End Plate	1
3	5002A-03	Motor Housing	1	13	5002A-13	Valve	1	23	5002A-23	Ball Bearing	1*
4	5002A-04	Valve Screw	1	14	5002A-14	Throttle Lever Pin	1	24	5002A-24	Washer	1
5	5002A-05	O-Ring	1*	15	5002A-15	Safety Throttle Lever	1	25	5002A-25	Spindle	1
6	5002A-06	O-Ring	1*	16	5002A-16	Ball Bearing	1	26	5002A-26	Retainer	1
7	5002A-07	Air Regulator	1	17	5002A-17	Rear Plate	1	27	5002A-27	Housing Cap	1
8	5002A-08	Spring	1*	18	5002A-18	Pin	2	28	5002A-28	1/4" Collet	1
9	5002A-09	O-Ring	1*	19	5002A-19	Rotor Blades	4*	29	5002A-29	Collet Nut	1
10	5002A-10	Throttle Valve	1	20	5002A-20	Rotor	1	30	5002A-30	Double Ended Spanner	2

TECHNICAL DATA

	Max Air Pressure	Recommended Air Hose Size	RPM Free Speed	Max Air Flow CFM	Weight (lbs.)
5002A	90 psi	3/8	22,000	10	1.1

FOOTNOTES

* Parts Available in Repair Kit 5002A-RK*



When ordering spare parts, please specify tool type, part number and description

10000 SE PINE, PORTLAND, OR 97216
503-254-1749 FAX 503-256-4026

REVISED 7/99