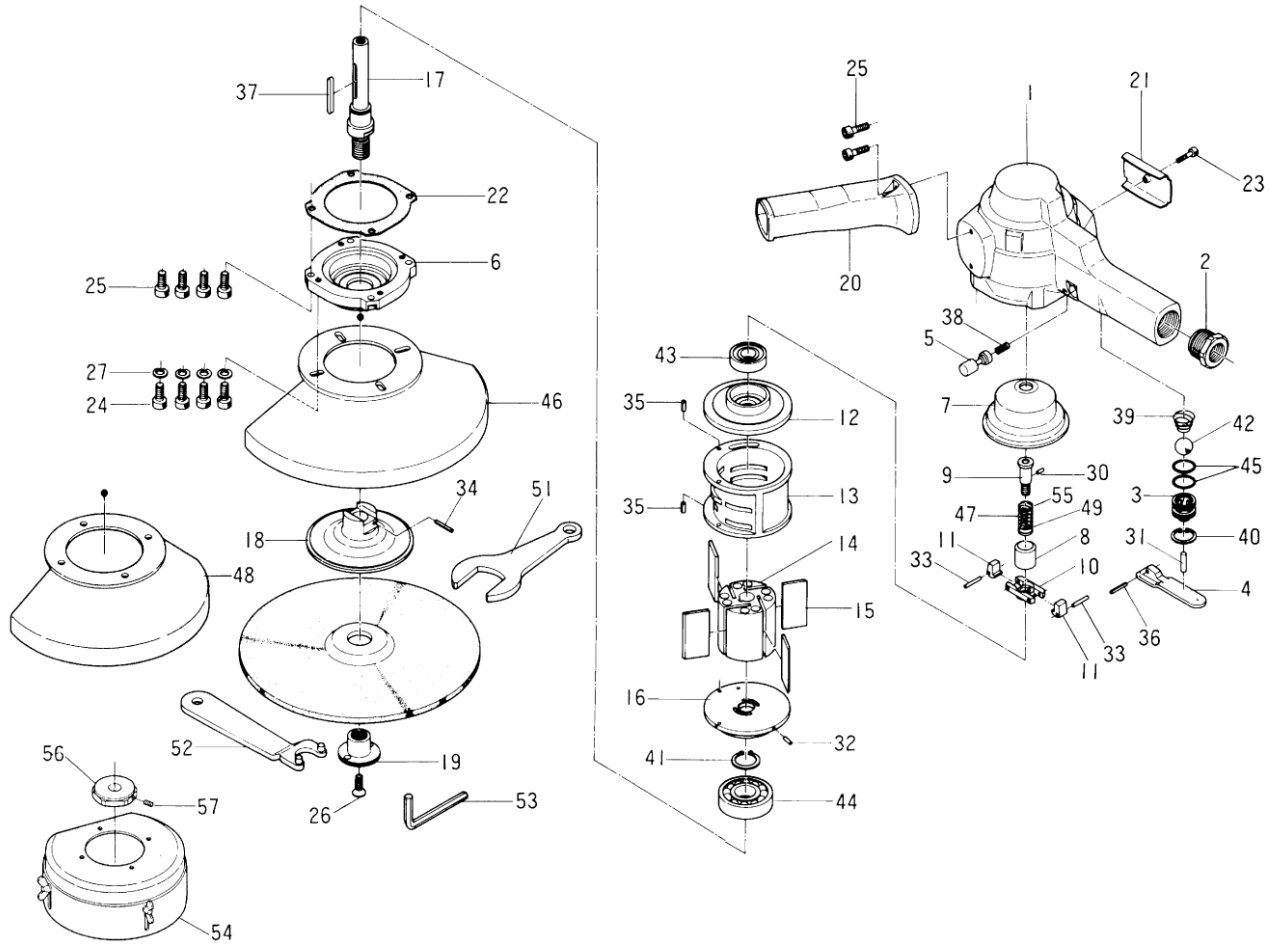


# 5020/5021/5022/5023 VERTICAL GRINDER

## EXPLODED VIEW ONLY



## PARTS LIST – FOR REFERENCE ONLY

Index Number	Part Number	Description	Qty.	Index Number	Part Number	Description	Qty.	Index Number	Part Number	Description	Qty.
1	523-025-1	Casing	1	18	592-393-4	Wheel Holder Flange (B/F)	1	35	973-160-0	Roll Pin (3.5 x 10)	2
2	523-091-0	Air Inlet Bushing	1	19	518-394-7	Wheel Nut Flange	1	36	973-170-0	Roll Pin (3.5 x 20)	1
3	523-101-0	Valve Bushing	1	20	523-720-0	Dead Handle	1	37	974-140-0	Key (4 x 40)	1
4	566-107-5	Valve Lever	1	21	523-021-0	Exhaust Deflector	1	38	976-114-0	Spring (6 x 18 x 0.55)	1
5	585-765-1	Safety Pin	1	22	523-853-1	Head Cover Packing	1	39	977-281-0	Cone Spring (12 x 19.5 x 19)	1
6	523-012-1	Head Cover	1	23	945-018-0	Allen Head Bolt (M4 x 18)	1	40	979-015-0	Inner Snap Ring (22)	1
7	523-013-0	Inner Cover	1	24	945-214-0	Allen Head Bolt (M6 x 14)	4	41	979-117-0	Outer Snap Ring (20)	1
8	593-170-3	Governor Valve	1	25	945-218-0	Allen Head Bolt (M6 x 18)	6	42	981-216-0	Ball (Black-5/8)	1
9	593-176-4	Governor Spindle	1	26	948-453-0	Allen Head Screw (M6 x 18)	1	43	982-242-0	Ball Bearing (6202Z)	1
10	591-181-7	Governor Cage	1	27	962-009-0	Spring Washer (2-6S)	4	44	982-344-0	Ball Bearing (6304Z)	1
11	593-183-3	Governor Weight	2	28	965-021-0	Heli-Sert (M6 x 1.5D)	6	45	990-916-0	O-Ring (SNS-18)	2
12	523-285-0	Rear Plate	1	29	965-022-0	Heli-Sert (M6 x 2D)	4	46	523-770-0	Wheel Guard	1 ?
13	523-286-0	Cylinder	1	30	970-205-0	Pin (H) (3 x 7)	1	47	976-342-0	Spring (13.6 x 17.5 x 1.4)	1 ??
14	518-287-6	Rotor	1	31	970-324-0	Pin (H) (4 x 24)	1	48	523-770-3	Wheel Guard	1 ??
15	518-288-6	Blade	4	32	973-070-0	Roll Pin (2.5 x 10)	1	49	976-339-0	Spring (13.5 x 19 x 1.6)	1 ?
16	523-289-0	Front Plate	1	33	973-120-0	Roll Pin (3 x 20)	2	54	523-895-6	Cap Wheel Guard Assembly	1 ?
17	523-390-0	Wheel Spindle (Out)	1	34	973-122-0	Roll Pin (3 x 22)	1	55	976-338-0	Spring (13.3 x 30 x 1.0)	1 ?
								56	892-035-1	Spacer (Cup Wheel)	1
								57	953-114-0	Allen Head Screw (M4 x 14)	1

### TECHNICAL DATA

	Wheel Capacity (in)	RPM Free Speed	Weight (lbs.)	CFM Max Air Flow
5020	9	5,900	10.1	20.3
5021	7	7,600	10.1	20.3
5022	7	5,900	10.1	20.3
5023	6	4,500	10.1	20.3

### ACCESSORIES

51	936-524-0	Spanner (24)	1
52	938-057-0	Spanner (6 x 30 x 170)	1
53	939-105-0	Allen Wrench (4mm)	1
58	936-077-0	Spanner (50 x 6 x 120)	1

### FOOTNOTES

- ? Indicates 5020 part
- ? Indicates 5021 part
- ? Indicates 5022 part
- ? Indicates 5023 part



When ordering spare parts, please specify tool type, part number and description

10000 SE PINE, PORTLAND, OR 97216  
503-254-1749 FAX 503-256-4026

REVISED 7/09