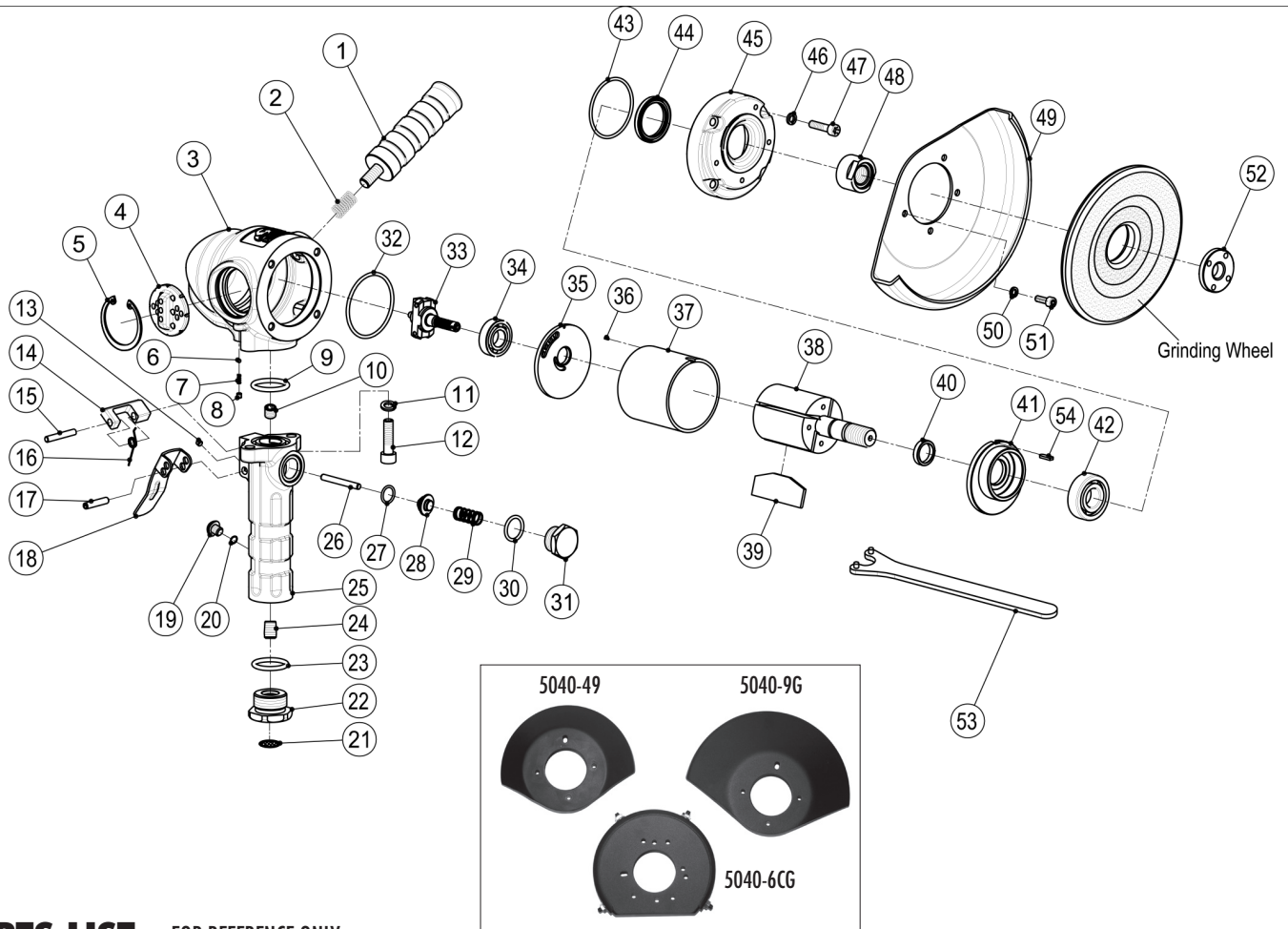


5040, 5040-6, 5040-9 VERTICAL GRINDERS

EXPLODED VIEW



PARTS LIST — FOR REFERENCE ONLY

Index Number	Part Number	Description	Qty.	Index Number	Part Number	Description	Qty.	Index Number	Part Number	Description	Qty.
1	5040-1	Assist Handle Assy	1	20	5040-20	Throttle Valve Cap Gasket	1	41	5040-41	Front End Plate	1
2	5040-2	Helicoil Insert M10 x 1.5D	1	21	5040-21	Filter Net 1/2	1	42	982-243-0	Ball Bearing 6203ZZ	1
3	5040-3	Mtr Housing 3HP	1	22	5040-22	Inlet Cap	1	43	5040-43	O-Ring 63.17 x 2.6	1
4	5040-4	Exhaust Deflector	1	23	5040-23	O-Ring 25 x 3.53	1	44	5040-44	Oil Seal TB 30 x 40 x 5	1
5	5040-5	Snap Ring 45	1	24	5040-24	Oil Regulator Assy	1	45	5040-45	Housing Cover	1
6	5040-6a	Steel Ball 3	1	25	5040-25	Throttle Handle	1	46	5040-46	Spring Washer 6	4
7	5040-7	Spring	1	26	5040-26	Throttle Stem	1	47	5040-47	Cap Screw M6 x 25	4
8	5040-8	Set Screw M4 x 0.7P x 4	1	27	5040-27	O-Ring 10.77 x 2.62	1	48	5040-48	Arbor Nut	1
9	5040-9a	O-Ring 28 x 3	1	28	5040-28	Air Closer	1	49	5040-49	7" Guard Assy. for 5040	1
10	5040-10	Set Screw NPT1/8-27 x 7.8	1	29	5040-29	Throttle Spring	1		5040-6CG	6" Cup Guard Assy. for 5040-6	1
11	5040-11	Spring Washer	2	30	5040-30	O-Ring 18 x 2.5	1		5040-9G	9" Guard Assy. for 5040-9	1
12	5040-12	Cap Screw	2	31	5040-31	Throttle Valve Cap	1	50	5040-50	Spring Washer 5	4
		5/16 in.-18 B.S.W. x 1"		32	5040-32	Rear Gasket	1	51	5040-51	Cap Screw M5 x 20	4
13	5040-13	Screw 10#-32C x 1/8	1	33	5040-33	Governor Assy	1	52	5040-52	Collar	1
14	5040-14	Lockout	1	34	982-142-0	Ball Bearing 6002ZZ	1	53	5040-53	Allen Wrench	1
15	5040-15	Lockout Pin 6.35 x 38	1	35	5040-35	Rear End Plate	1	54	5040-54	Positioning Key	1
16	5040-16	Lockout Spring	1	36	5040-36	Lockout Pin 1.5 x 6	1	55	5040-THP	Guard Spacer Plate	1
17	5040-17	Spring Pin 1/4" x 1"	1	37	5040-37	Cylinder	1				
18	5040-18	Lever	1	38	5040-38	Rotor	1				
19	5040-19	Oiler Plug	1	39	5040-39	Rotor Blade	4				
		3/8 in.-16 B.S.W. x 1/2"	1	40	5040-40	Rotor Bushing	1				

FOOTNOTES



10000 SE PINE
PORTLAND, OR 97216
503-254-6600
FAX 503-255-2615

When ordering spare parts, please specify tool type, part number, and description