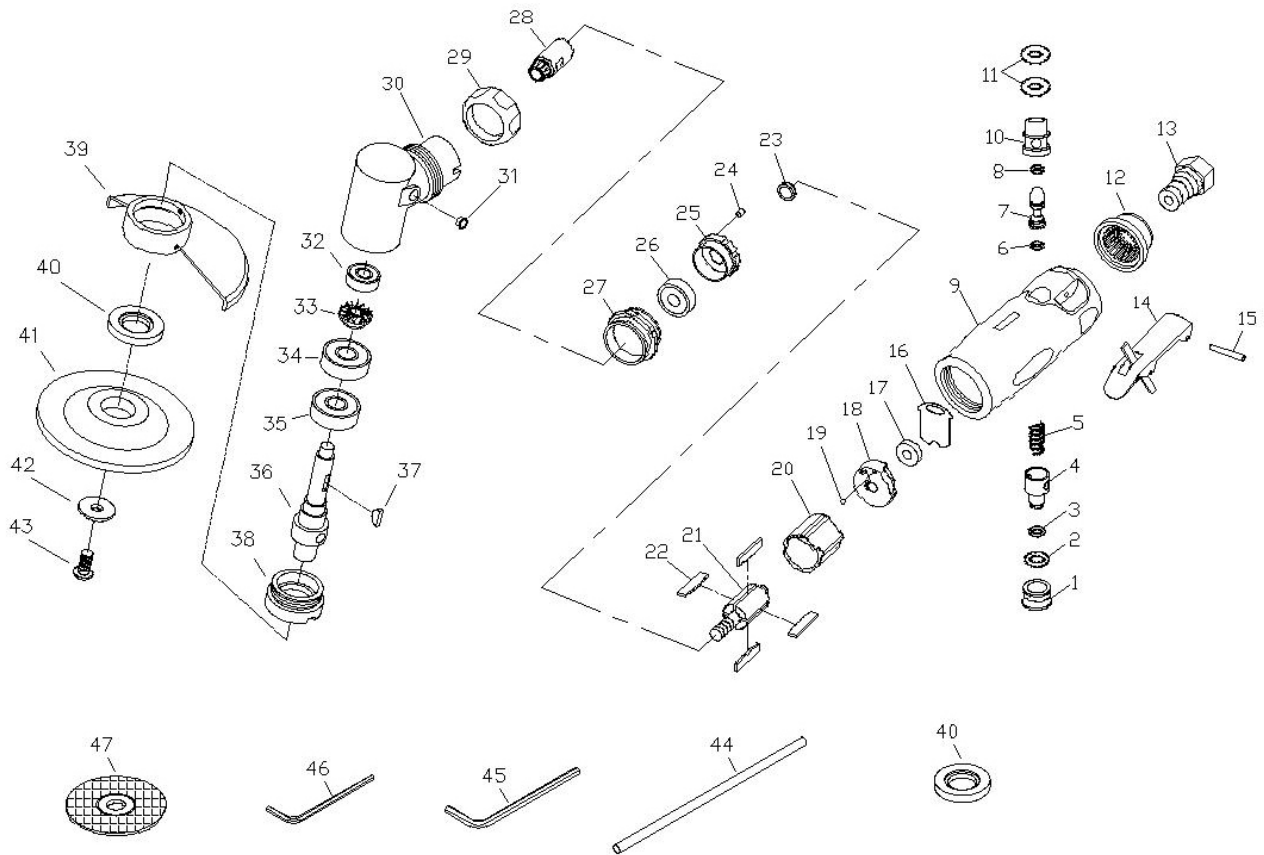


5205-2EC 105° ANGLE DIE GRINDER

EXPLODED VIEW



PARTS LIST — FOR REFERENCE ONLY

Index Number	Part Number	Description	Qty.	Index Number	Part Number	Description	Qty.	Index Number	Part Number	Description	Qty.
1	3055001	Plug Screw	1	17	3055017	Bearing (696)	1	33	3055033	Spindle Gear	1
2	3055002	O-Ring	1	18	3055018	Bearing Plate	1	34	3055034	Bearing (608)	1
3	3055003	O-Ring	1	19	3055019	Ball	1	35	3055035	Bearing (696)	1
4	3055004	Air Regulator	1	20	3055020	Cylinder	1	36	3055048	Spindle	1
5	3055005	Valve Spring	1	21	3055021	Rotor	1	37	3055037	Woodruff Key	1
6	3055006	O-Ring	1	22	3055022	Rotor Blade	4	38	3055054	Clamp Nut	1
7	3055007	Valve Stem	1	23	3055023	Rotor Collar	1	39	5205EC-G	Metal Guard	1
8	3055008	O-Ring	1	24	3055024	Locating Pin	1	40	3055053	Spacer	2
9	3055009	Motor Housing	1	25	3055025	Bearing Plate	1	41	3055052	Grinding Wheel	1
10	3055010	Valve Bushing	1	26	3055026	Bearing (608)	1	42	3055049	Washer	1
11	3055011	O-Ring	2	27	3055027	Lock Ring	1	43	3055050	Hex Screw	1
12	3055012	Muffler	1	28	3055028	Piston Gear	1	44	3055044	Holding Tool	1
13	3055013	Air Inlet	1	29	3055029	Cap	1	45	3055051	Hex Key	1
14	3055014	Lever	1	30	3055030	105° Head Housing	1	46	3055046	Hex Key	1
15	3055015	Lever Pin	1	31	3055031	Grease Cap	1	47	3055055	Cutting Wheel	1
16	3055016	Steel Plate	1	32	3055032	Bearing (696)	1				

FOOTNOTES

EAGLE GROUP
A Division of AIMCO

10000 SE PINE
PORTLAND, OR 97216
503-254-6600
FAX 503-255-2615

When ordering spare parts, please specify tool type, part number, and description