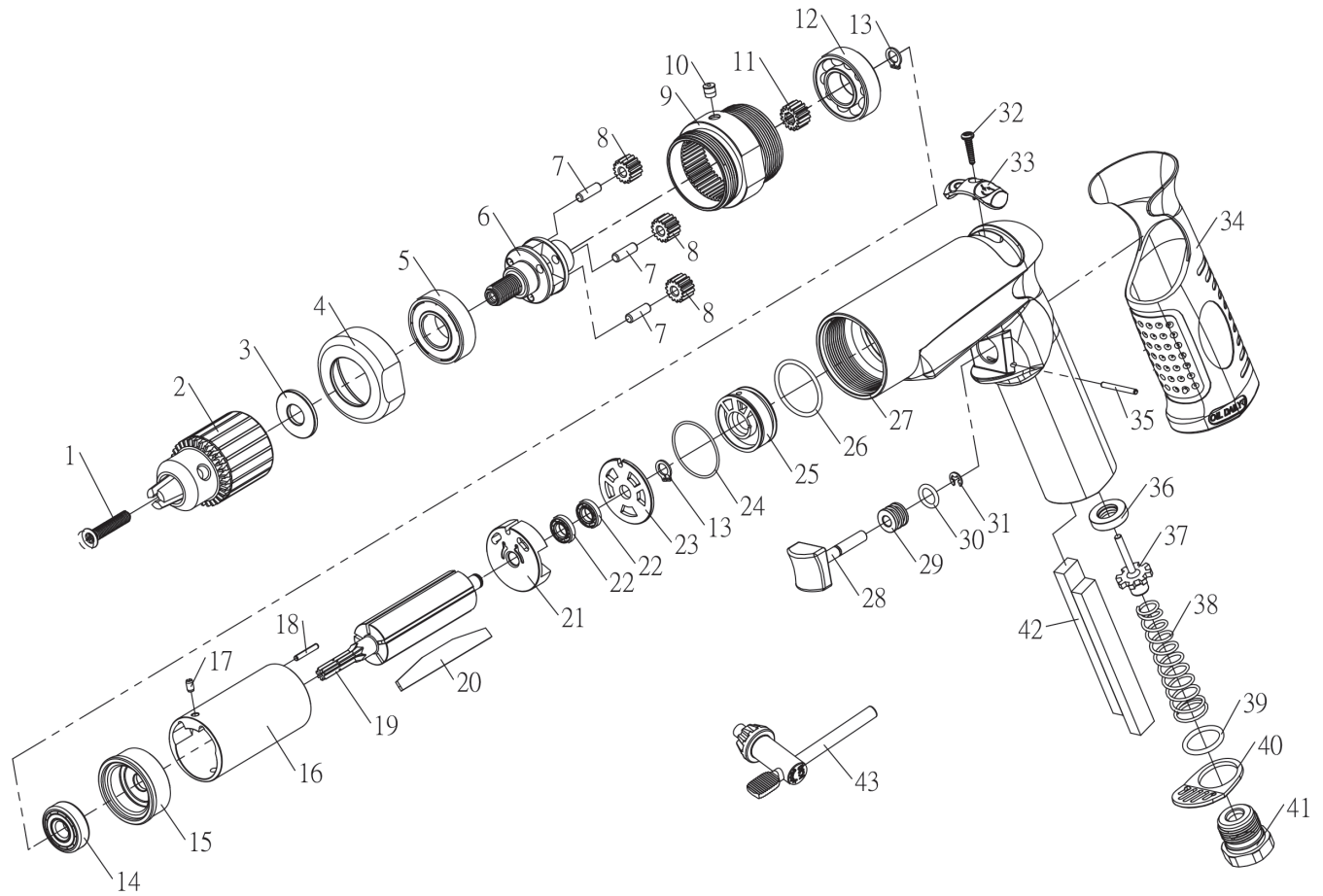


7P-1028 SERIES HEAVY DUTY REVERSIBLE AIR DRILL, 1 HP

EXPLODED VIEW



PARTS LIST — FOR REFERENCE ONLY

Index Number	Part Number	Description	Qty.	Index Number	Part Number	Description	Qty.	Index Number	Part Number	Description	Qty.
1	H4-0525L	Chuck Screw	1	19	1012-025	Rotor	1	38	5024-038	Trigger Spring	1
2	Various	Drill Chuck (see Chuck/Key Reference Table)	1	20	7P-1028-RK	Rotor Blade	5 ●	39	7P-1028-TK	O-Ring (ID 15 x 2)	1 ■
3	5024-003	Washer	1	21	5024-020	Rear End Plate	1	40	5024-040	Exhaust Cap	1
4	1011-004	Gear Case Cap	1	22	7P-1028-RK	Ball Bearing (R188)	2 ●	41	5024-041	Air Inlet	1
5	982-142-0	Ball Bearing (6002ZZ)	1	23	5024-022	Reversing Plate	1	42	7P-1028-RK	Silencer Pad	2 ●
6	1014-006	Gear Carrier	1	24	7P-1028-RK	O-Ring (ID 22 x 1)	1 ●		7P-1028-TK	Silencer Pad	2 ■
7	NR-40128	Pin (4 x 12.8)	3	25	5024-025	Reversing Manifold	1	43	Various	Key (see Chuck/Key Reference Table)	1
8	1012-017	Planet Gear	3	26	7P-1028-RK	O-Ring (ID 23.52 x 1.78)	1 ●				
9	1011-010	Gear Case	1	27	1013-027	Housing	1				
10	360010	Grease Fitting	1	28	5024-028	Trigger	1				
11	1012-019	Gear	1	29	5024-029	Trigger Sleeve	1				
12	982-142-0	Ball Bearing (6002ZZ)	1	30	7P-1028-TK	O-Ring (ID 7.65 x 1.78)	1 ■				
13	STW-006	Snap Ring	2	31	7P-1028-TK	Retaining Ring	1 ■				
14	7P-1028-RK	Ball Bearing (608ZZ)	1 ●	32	H7-0313	Tapping Screw	1				
15	5024-014	Front End Plate	1	33	5024-033	Reversing Shuttle	1				
16	1013-015	Cylinder	1	34	5024-034	Housing Cover	1				
17	SPP-30050	Spring Pin (3 x 5)	1	35	SPP-20200	Spring Pin (2 x 20)	1				
18	SPP-20140	Spring Pin (2 x 14)	1	36	7P-1028-TK	Washer	1 ■				
				37	7P-1028-TK	Pin Valve Rod	1 ■				

CHUCK / KEY REFERENCE TABLE

Chuck/Key Model #	Description	Drill Model #
QC250	1/4" QC Chuck	7P-1028-1
41BA	3/8" Keyed Chuck	7P-1028-4
K-30	Key	7P-1028-4
510-2H	3/8" Keyless Chuck	7P-1028-5
24BA	1/2" Keyed Chuck	7P-1028-6
K-30	Key	7P-1028-6
513-2M	1/2" Keyless Chuck	7P-1028-7

FOOTNOTES

- = Parts in Repair Kit 7P-1028-RK
- = Parts in Tune-Up Kit 7P-1028-TK



10000 SE PINE
PORTLAND, OR 97216
503-254-6600
FAX 503-255-2615

When ordering spare parts, please specify tool type, part number, and description