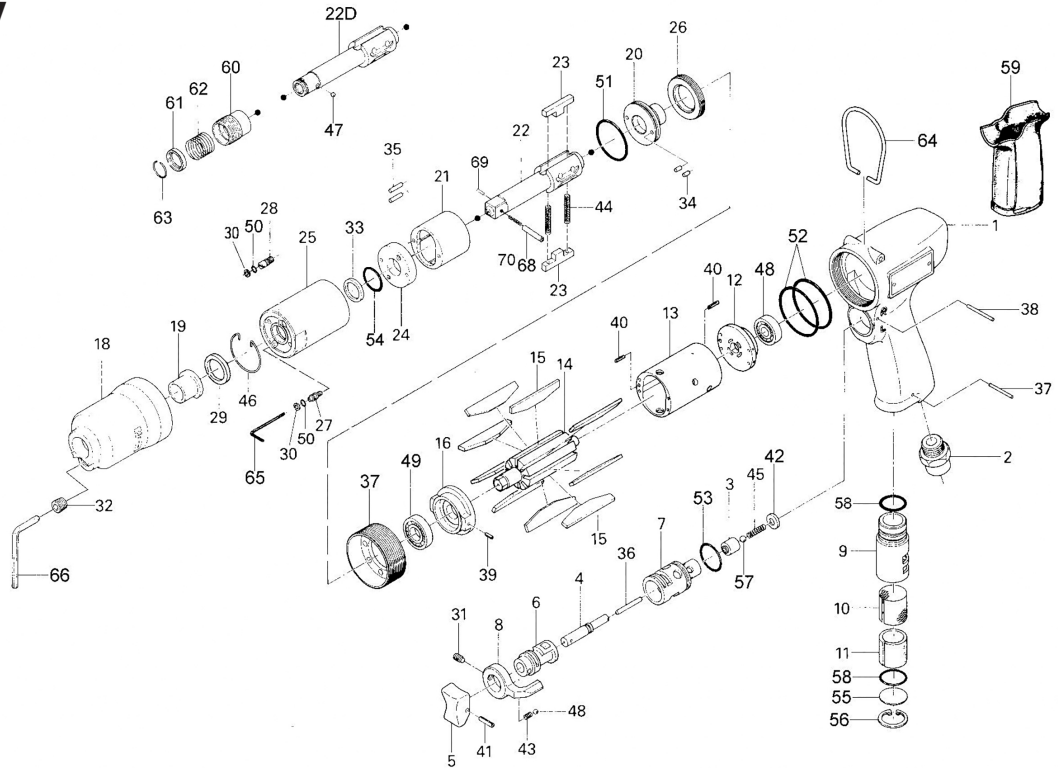
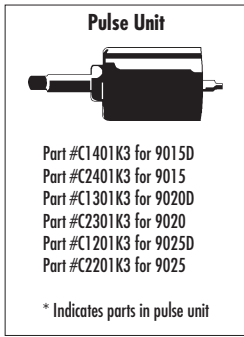


# 9015(D), 9020(D), 9025(D) PULSE TOOLS

## EXPLODED VIEW



## PARTS LIST — FOR REFERENCE ONLY

Index Number	Part Number	Description	Qty.
<b>COMMON PARTS</b>			
2	C120100200	Air Inlet Bushing	1
3	C120100300	Valve	1
4	C120100400	Valve Rod Bushing	1
5	C120100500	Trigger	1
6	C120100600	Reverse Valve	1
7	C120100700	Reverse Valve Bushing	1
8	C120100800	Reverse Lever	1
9	C120100900	Exhaust Stack	1
10	C120101000	Silencer	1
17	C120101700	Hammer Casing Connector	1
19	C120101900	Anvil Bushing	1
20	C120102000*	Rear Liner Plate	1
24	C120102400*	Front Liner Plate	1
26	C120102600*	Liner Casing Setter	1
27	C120102700*	Relief Valve Spindle	1
28	C120102800*	Oil Plug	1
29	C120102900	Anvil Front Spacer	1
31	C120103100	Allen Head Dog Point Screw	1
32	8045000000	Allen Head Plug (NPT 1/16)	1
34	C120103400*	Pin (H) (2.45 x 4.5)	2
35	C120103500*	Pin (H) (2.45 x 11)	2
36	C120103600	Pin (G) (2 x 12)	1
37	C120103700	Pin (2.5 x 22)	1
38	C120103800	Pin (2 x 22)	1
39	1410000000	Roll Pin (2 x 6)	1
41	C120104100	Roll Pin (2 x 14)	1
42	C120104200	Valve Cover	1
43	C120104300	Spring (3 x 5)	1
45	C120104500	Spring (3.2 x 13)	1
46	C120104600*	Snap Ring	1
47	0420000000	Ball (1/8)	1
53	C120105300	O-Ring (13 x 1.5)	1
55	C120105500	Round Plate	1
56	C120105600	Inner Snap Ring (IRTW-18)	1
57	0427000000	Ball	1
58	C120105800	O-Ring (15.5 x 1.5)	2
59	C120105900	Handle Cover	1
64	110100000L	Hook	1
<b>PARTS FOR 9015 &amp; 9015D</b>			
1	C140100100	Housing	1
12	C140101200	Rear Plate	1
13	C140101300	Cylinder	1
14	C140101400	Rotor	1
16	C140101600	Front Plate	1

Index Number	Part Number	Description	Qty.
18	C130101800	Front Casing	1
21	C130102100*	Liner	1
23	C130102300*	Anvil Blade	2
25	C130102500*	Liner Casing	1
40	C140104000	Roll Pin (1.75 x 6)	2
<b>9015</b>			
22	C230102200*	Anvil (3/8" SQ Drive)	1
68	C120106800*	Pin	1
69	C120106900*	Iron Pad	1
70	C120107000*	Spring	1
<b>9015D</b>			
22	C130102200*	Anvil 1/4" QC	1
60	C120106000*	Bit Sleeve	1
61	C120106100*	Bit Spacer	1
62	C120106200*	Spring	1
63	C120106300	Snap Ring	1
<b>PARTS FOR 9020 &amp; 9020D</b>			
1	C130100100	Housing	1
12	C120101200	Rear Plate	1
13	C130101300	Cylinder	1
14	C130101400	Rotor	1
18	C130101800	Front Casing	1
21	C130102100*	Liner	1
23	C130102300*	Anvil Blade	2
25	C130102500*	Liner Casing	1
40	C120104000	Roll Pin (2 x 8)	2
<b>9020</b>			
22	C230102200*	Anvil (3/8" SQ Drive)	1
68	C120106800*	Pin	1
69	C120106900*	Iron Pad	1
70	C120107000*	Spring	1
<b>9020D</b>			
22	C130102200*	Anvil 1/4" QC	1
60	C120106000*	Bit Sleeve	1
61	C120106100*	Bit Spacer	1
62	C120106200*	Spring	1
63	C120106300	Snap Ring	1
<b>PARTS FOR 9025 &amp; 9025D</b>			
1	C120100100	Housing	1
12	C120101200	Rear Plate	1

Index Number	Part Number	Description	Qty.
13	C120101300	Cylinder	1
14	C120101400	Rotor	1
16	C120101600	Front Plate	1
18	C120101800	Front Casing	1
21	C120102100*	Liner	1
23	C120102300*	Anvil Blade	2
25	C120102500*	Liner Casing	1
40	C120104000	Roll Pin (2 x 8)	2
<b>9025</b>			
22	C220102200*	Anvil (3/8" SQ Drive)	1
68	C120106800*	Pin	1
69	C120106900*	Iron Pad	1
70	C120107000*	Spring	1
<b>9025D</b>			
22	C120102200*	Anvil 1/4" QC	1
60	C120106000*	Bit Sleeve	1
61	C120106100*	Bit Spacer	1
62	C120106200*	Spring	1
63	C120106300	Snap Ring	1
<b>REPAIR KITS</b>			
9025-RK Repair Kit for all Models Listed (Parts available in kit only)			1
11		Filter	1
15		Blade	9
48		Ball Bearing (EE-2)	1
49		Ball Bearing (EE-3)	1
52		O-Ring (33.05 x 1.78)	2
9025-PRK Pulse Repair Kit for all Models Listed (Parts available in kit only)			1
30	*	Supporting Ring (2.6 x 4.5 x 1)	2
33	*	Supporting Ring	1
44	*	Spring (3.5 x 21) WPC	2
50	*	O-Ring (1.42 x 1.53)	2
51	*	O-Ring (20.35 x 1.78)	1
54	*	O-Ring (P12)	2
<b>ACCESSORIES</b>			
65	C120106500	Allen Wrench (1.5 mm)	1
66	C120106600	Allen Wrench (4 mm)	1



1000 SE PINE  
 PORTLAND, OR 97216  
 503-254-6600  
 FAX 503-255-2615

When ordering spare parts, please specify tool type, part number, and description

### FOOTNOTES

\* Indicates parts in Pulse Unit