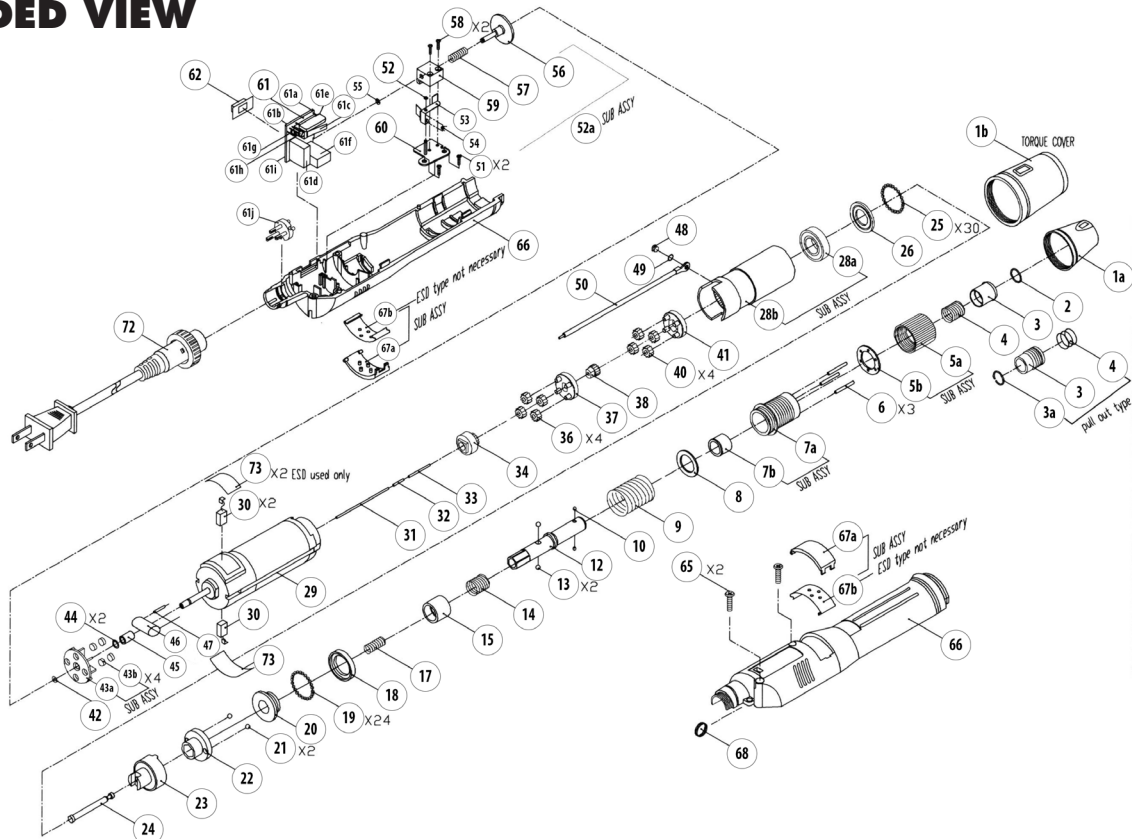


AE-5681 & AE-5681ESD SCREWDRIVERS

EXPLODED VIEW



PARTS LIST — FOR REFERENCE ONLY

Index Number	Part Number	Description	Qty.	Index Number	Part Number	Description	Qty.	Index Number	Part Number	Description	Qty.
1a	6H1046	Retaining Ring	1	28b	4X1046	Gear Housing	1	60	4V1123	Fixing Plate	1
1b	6H1047	Torque Cover	1	29	2M5043	Motor 24N2975-13036-35Y-DS	1	61	2A6031A	Pwb Sub Ass'y	1
1a	6H1048	Retaining Ring [ESD]	1	30	2B1014	Carbon Brush	1	61a	2H1074	Circuit Board	1
1b	6H1049	Torque Cover [ESD]	1	31	4N4026	Guide Pin A (1.5 x L = 89.3)	1	61b	2S2019	Fwd/Rev Switch	1
2	4U1051	Snap Ring (1.0 x 9.5)	1	32	4N4032	Guide Pin B (1.5 x L = 10)	1	61c	2S3011	Micro Switch (SS-10GL)	1
3	4H2048	Bit Slide Sleeve (Pull Out Type)	1	33	4N1126	Guide Pin C (2.0 x L = 18.8)	1	61d	2E1036	Bridge Rectifier (PBL 405)	1
3a	4U1051	Snap Ring (Pull Out Type)	1	34	6G9012	Connect Gear 14T	1	61e	2C6812	Capacitor 0.22/400V (224)	1
4	4S3065	Sleeve Spring	1	36	4G2685	First Planet Gear 14T	4	61f	2F3015	Protector (1.25A/250V)	1
5	4A4022	Regulating Handle Sub Ass'y	1	37	4L1812	First Gear Cage	1	61g	2D4017	Silicon Rectifier (IN4007)	1
5a	4J1066	Regulating Handle	1	38	4G1611	Central Gear 14T	1	61h	2N1012	LED	1
5b	4W4712	Washer (22 x 14 x T = 1)	1	40	4G2685	Second Planet Gear 14T	4	61i	2R8416	Resistor (10KΩ/2W)	1
6	4N1026	Push Pin (2.0 x L = 18.8)	3	41	4L2821	Second Gear Cage	1	61j	2G1016	3P Socket	1
7	4A1019	Hammer Casing Sub Ass'y	1	42	4U1068	Snap Ring	1	62	6V1042	Push Button (Black)	1
7a	4T1076	Hammer Casing	1	43	6A3011	Fan Sub Ass'y	1	62	6V1041	Push Button (Black) [ESD]	1
7b	4Q1064	Anvil Bushing	1	43a	6R2014	Fan	1	65	8T2690	Screw (3.0 x L = 16)	2
8	4W4214	Washer	1	43b	2V1016	Magnet	4	66	6Z1161	Plastic Housing (White Gray)	1
9	4S1035	Spring (2.4)	1	44	6W1013	Plastic Washer (T = 0.5)	2	66	6Z1160	Plastic Housing (Black) [ESD]	1
10	4B2015	Ball (2.38) for 1/4"	1	6W1014	Plastic Washer (T = 0.25)	1	67	6C4010	Carbon Maintenance Bonnet Set (Black) [ESD]	1	
12	4C1158	Anvil (Pull Out Type) for 1/4"	1	45	4Q1073	Anvil Bushing (L = 7.9)	1	67	6A2014	Carbon Maintenance Bonnet Sub Assy (White Gray)	1
13	4B1029	Ball (4.0)	2	46	2C6821	Capacitor 0.1K/400V	1	67a	6C4011	Carbon Maintenance Bonnet Set (White Gray)	2
14	4S3066	Spring	1	47	2R2014	Resistor 100Ω 1/4W	1	67b	4S5012	Spring Connector	2
15	4K3058	Slide Sleeve	1	48	8F1623	Screw (2.0 x L = 5)	1	68	4F1023	Hanger Ring	1
17	4S2025	Spring (0.5)	1	49	4W1611	Washer (5 x 2.6 x T = 0.8)	1	72	2W1086	AC Cord for U.S.A.	1
18	4E2013	Retainer	1	50	2L9231	Grounding Wire	1	72	2W1087	AC Cord for Europe	1
19	4B1024	Ball (2.0)	24	51	8T2685	Screw (3.0 x L = 8)	2	72	2W1088	AC Cord for U.K.	1
20	4K3046	Control Disc	1	52	6W1012	Plastic Washer	1	72	2W1089	AC Cord for Australia	1
21	4B1028	Ball (3.17)	2	52a	4A6012	Braking Disk Sub Ass'y	1	72	2W1251	AC Cord for South Africa (Big)	1
22	4K2032	Hammer	1	53	4S5016	Spring Plate	1	72	2W1253	AC Cord for South Africa (Small)	1
23	4K1067	Hammer	1	54	4S3101	Support Spring (0.5)	1	73	6W1212	Insulation Spacer [ESD]	1
24	4C2042	Slide Pin	1	55	4U1061	Snap Ring (0.5 x ID: 2.5)	1				
25	4B1024	Ball (2.0)	30	56	4K4011	Braking Disk	1				
26	4W3215	Washer	1	57	4S2027	Spring (0.45)	1				
28	4A7019	Gear Housing Sub Ass'y	1	58	8T3326	Screw (2.0 x L = 10)	2				
28a	4E1019	Ball Bearing 6901ZZ	1	59	4V1026	Slide Base	1				

FOOTNOTES



1000 SE PINE
PORTLAND, OR 97216
503-254-6600
FAX 503-255-2615

When ordering spare parts, please specify
tool type, part number, and description