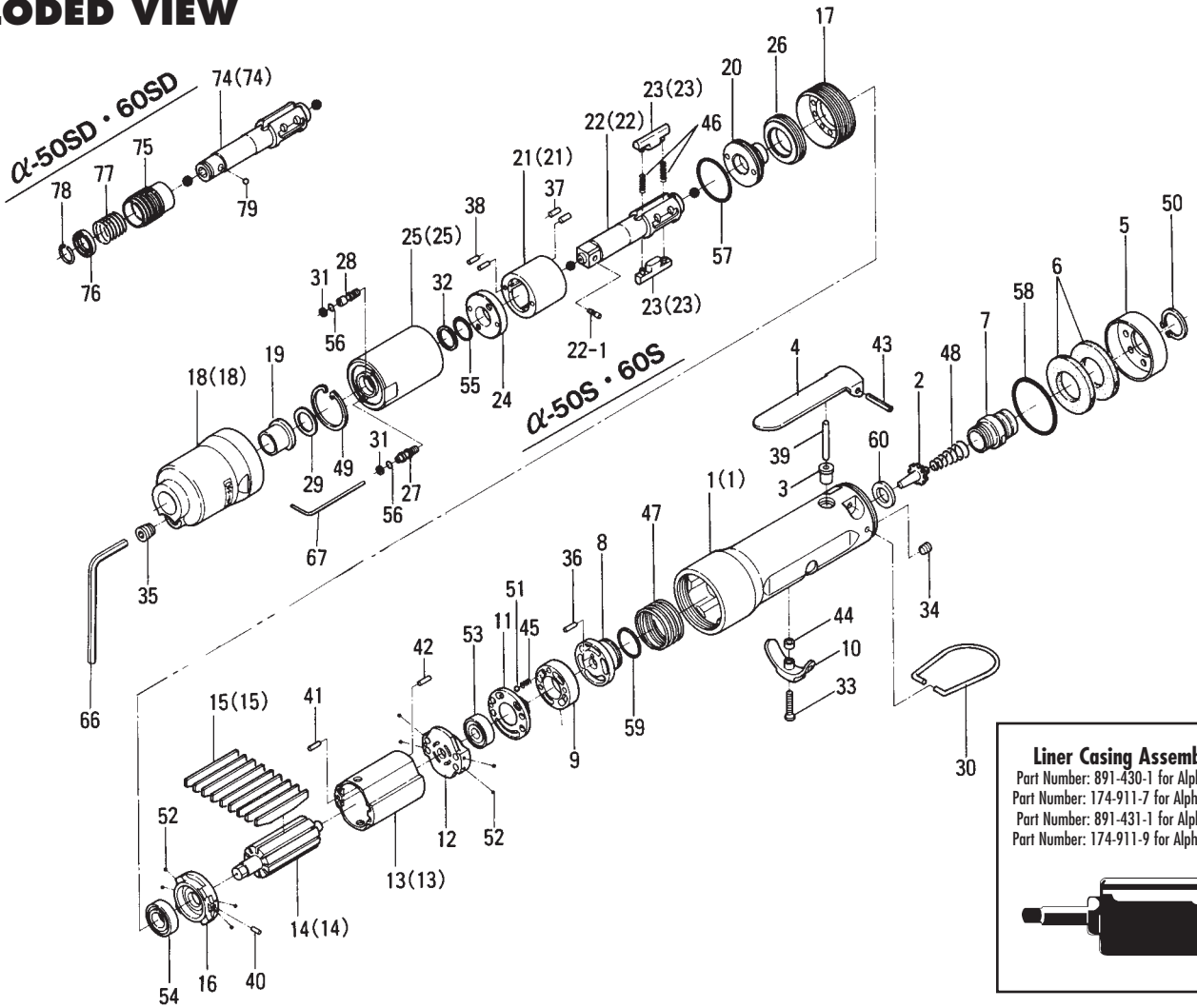


EXPLODED VIEW



PARTS LIST — FOR REFERENCE ONLY

Index Number	Part Number	Description	Qty.
1	161-025-6	Casing	1
2	259-100-0	Valve	1
3	161-103-3	Valve Rod Bushing	1
4	196-107-7	Valve Lever	1
5	161-782-6	Exhaust Cover	1
6	161-835-6	Filter	2
7	161-091-6	Air Inlet Bushing	1
8	161-226-6	Auxiliary Reverse Valve	1
9	161-210-6	Reverse Valve	1
10	161-212-3	Reverse Lever	1
11	161-222-6	Reverse Valve Retainer	1
12	161-285-6	Rear Plate	1
13	161-286-6	Cylinder	1
14	174-287-0	Rotor	1
15	174-288-0	Blade	9
16	161-289-6	Front Plate	1
17	161-036-6	Hammer Casing Connector	1
18	177-439-5	Front Casing	1
19	190-328-6	Anvil Bushing	1
20	196-901-4	Rear Liner Plate	1
21	177-902-5	Liner	1
22	891-307-1	Anvil (OP-P) Assembly	1
22-1	891-300-1	Socket Pin Assembly	1
23	177-440-5	Driving Blade	2
24	178-904-8	Front Liner Plate	1
25	177-905-6	Liner Casing	1
26	190-906-6	Liner Casing Setter	1
27	174-907-8	Relief Valve Spindle	1

Index Number	Part Number	Description	Qty.
28	178-742-0	Oil Plug	1
29	178-327-9	Front Anvil Spacer	1
30	191-790-1	Suspension Ring	1
31	944-002-0	Supporting Ring (2.6 x 4.5 x 1)	2
32	944-214-0	Supporting Ring (12 x 15.9 x 1.5)	1
33	948-426-0	Allen Flush Head Screw (M3 x 12)	1
34	953-205-0	Allen Head Flat Point Screw (M5 x 5)	1
35	966-110-0	Allen Head Plug (NPT1/16)	1
36	970-014-0	Pin (H) (1.5 x 6.8)	1
37	970-130-0	Pin (H) (2.45 x 4.5)	2
38	970-135-0	Pin (H) (2.45 x 11)	2
39	970-222-0	Pin (H) (3 x 22)	1
40	973-006-0	Roll Pin (2 x 6)	1
41	973-008-0	Roll Pin (2 x 8)	1
42	973-018-0	Roll Pin (2 x 18)	1
43	973-122-0	Roll Pin (3 x 22)	1
44	975-002-0	Spacer (5.5 x 3 x 3)	1
45	976-006-0	Spring (3 x 5 x 0.4)	1
46	976-791-0	Spring (3.3 x 21 x 0.4) WPC	2
47	976-654-0	Spring (29 x 14 x 1.5)	1
48	977-227-0	Cone Spring (9 x 12 x 25 x 0.8)	1
49	978-282-0	Snap Ring (28 x 1)	1
50	979-358-0	Inner Snap Ring (ISTW-17)	1
51	981-002-0	Ball (1/8)	1
52	981-045-0	Ball (1.5)	8
53	982-401-0	Ball Bearing (EE-2)	1
54	982-402-0	Ball Bearing (EE-3)	1
55	990-152-0	O-Ring (P12)	1

Index Number	Part Number	Description	Qty.
56	990-320-0	O-Ring (ARPS08-003)	2
57	990-329-0	O-Ring (JW1530-19)	1
58	990-603-0	O-Ring (28.5 x 1.3)	1
59	990-916-0	O-Ring (SNS-18)	1
60	996-423-0	Packing (16 x 10 x 2)	1
74	177-350-7	Driver Anvil	1
(74)	178-350-0	Driver Anvil	1
75	011-351-1	Bit Sleeve (1/8)	1
76	011-352-1	Bit Spacer	1
77	976-327-0	Spring (13.5 x 11 x 0.9)	1
78	978-117-0	Snap Ring (11.7 x 1)	1
79	981-002-0	Ball (1/8)	1
(1)	161-025-8	Casing	1 X
(13)	161-286-8	Cylinder	1 X
(14)	174-287-8	Rotor	1 X
(15)	174-288-8	Blade	9 X
(18)	178-439-8	Front Casing	1 X
(21)	190-902-6	Liner	1 X
(22)	891-316-1	Anvil (OP-P) Assembly	1 X
(23)	190-440-6	Driving Blade	2 X
(25)	178-905-9	Liner Casing	1 X

ACCESSORIES

66	939-105-0	Allen Wrench (4mm)	1
67	939-091-0	Allen Wrench (1.5mm)	1

FOOTNOTES

- = Parts for Alpha-50SD
- ◆ = Parts for Alpha-60SD
- = Parts for Alpha-50SD and 60SD
- X = Parts for Alpha-60S

AIMCO also offers a complete line of standard & special adapters, bits, sockets and extensions.



AIMCO

When ordering spare parts, please specify tool type, part number and description.
 10000 SE PINE, PORTLAND, OR 97216
 503-254-6600 FAX 503-255-2615