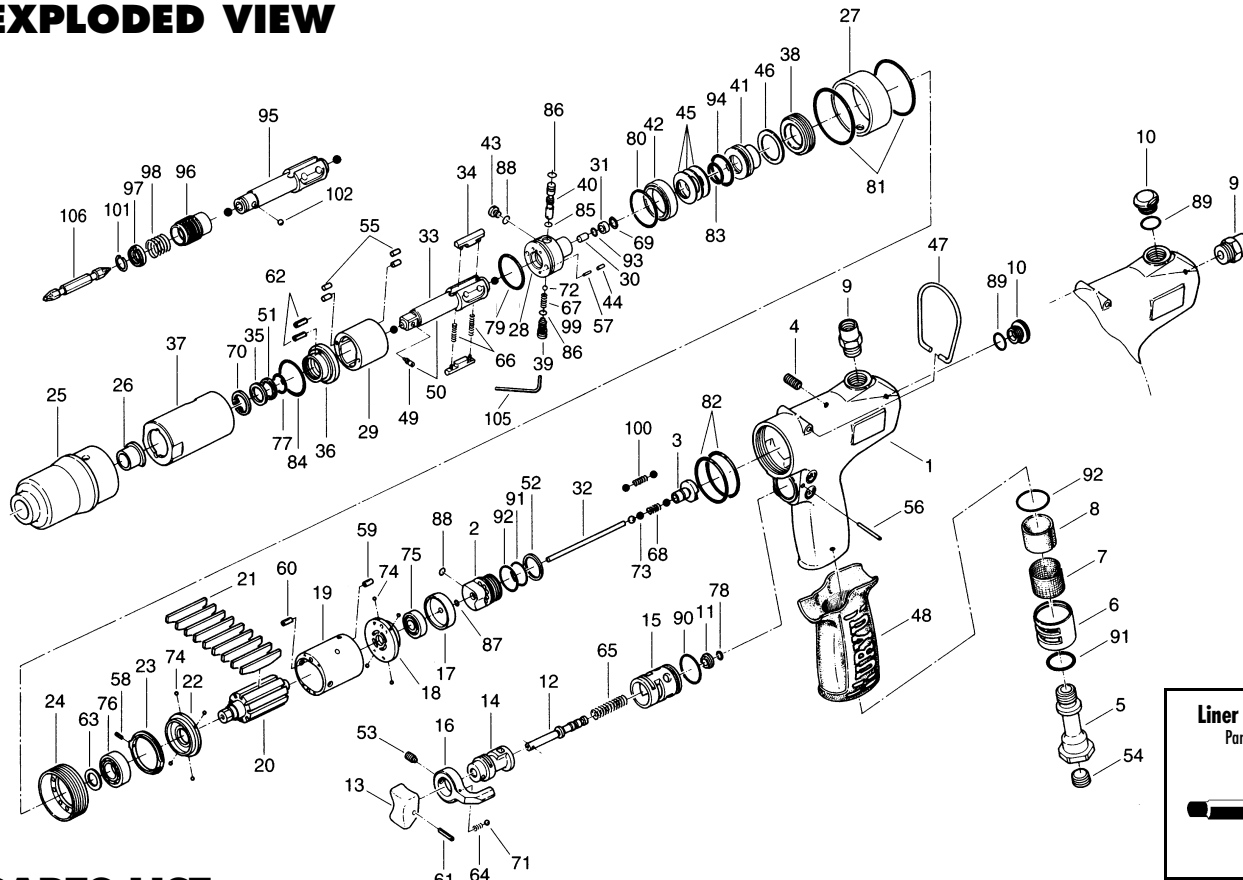


# ALPHA T62 (D) MI OIL-PULSE WRENCHES

## EXPLODED VIEW



## PARTS LIST — FOR REFERENCE ONLY

Index Number	Part Number	Description	Qty.	Index Number	Part Number	Description	Qty.	Index Number	Part Number	Description	Qty.
1	142-025-6	Handle	1	37	150-905-9	Liner Casing	1	73	981-245-0	Ball (4.5MM)	1
2	142-253-6	Shut-Off Valve Bushing	1	38	190-906-6	Liner Casing Setter	1	74	981-045-0	Ball (1.5MM)	8
3	155-254-2	Shut-Off Valve	1	39	150-907-5	Relief Valve Spindle	1	75	982-014-0	Ball Bearing (607)	1
4	150-108-5	Valve Plug	1	40	150-970-7	Relief Valve	1	76	982-902-0	Ball Bearing (6901)	1
5	147-091-2	Air Inlet Bushing	1	41	150-972-9	Accumulator	1	77	990-152-0	O-Ring (P-12) NTN	1
6	147-780-3	Exhaust Deflector	1	42	150-973-9	Liner Casing Spacer	1	78	990-323-0	O-Ring (ARP-568-004)	1
7	147-042-2	Silencer	1	43	142-742-4	Oil Plug	1	79	990-329-0	O-Ring (JW1530-19)	1
8	147-835-3	Filter (K-200)	1	44	150-064-5	Plug	1	80	990-331-0	O-Ring (JW1530-21)	1
9	142-091-6	Air Inlet Bushing	1	45	155-167-2	Belleville Spring	3	81	990-333-0	O-Ring (JW1530-23)	2
10	447-108-1	Valve Plug	1	46	150-682-9	Buffer	1	82	990-337-0	O-Ring (JW1530-27)	2
11	147-100-2	Valve	1	47	010-790-1	Suspension Ring	1	83	990-440-0	O-Ring (1-A-JASO-1014)	1
12	142-104-6	Valve Rod	1	48	147-842-2	Handle Cover	1	84	990-605-0	O-Ring (25 X 1.45)	1
13	147-107-2	Valve Lever	1	49	891-300-1	Socket Pin Assembly	1	85	990-623-0	O-Ring (4.6 X 3.0 X 0.8)	1
14	147-210-2	Reverse Valve	1	50	891-316-1	Anvil Assembly (OP-P)	1	86	990-625-0	O-Ring (5.5 X 3.5 X 1.0)	2
15	147-211-2	Reverse Valve Bushing	1	51	944-213-0	Supporting Ring (12 X 16 X 1)	1	87	990-900-0	O-Ring (SNS-2)	1
16	480-212-8	Reverse Lever	1	52	944-216-0	Supporting Ring (14 X 20 X 1.85)	1	88	990-971-0	O-Ring (SNS-3) NOK	2
17	142-291-6	Rear Plate Spacer	1	53	952-106-0	Allen Head Dog Point Screw (M4 X 6)	1	89	990-910-0	O-Ring (SNS-12.5)	1
18	142-285-6	Rear Plate	1	54	966-101-0	Allen Head Plug (1/4)	1	90	990-912-0	O-Ring (SNS-14)	1
19	142-286-6	Cylinder	1	55	970-130-0	Pin (H) (2.45 X 4.5)	4	91	990-914-0	O-Ring (SNS-16)	2
20	142-287-6	Rotor	1	56	971-123-0	Pin (2 X 23)	1	92	990-916-0	O-Ring (SNS-18)	2
21	150-288-5	Blade (PC)	9	57	972-011-0	Roller (1.5 X 4.8)	1	93	990-964-0	O-Ring (ARP-568-008) NOK	1
22	147-289-2	Front Plate	1	58	973-032-0	Roll Pin (2 X 4)	1	94	990-979-0	O-Ring (SNS-20) NOK	1
23	142-296-6	Front Plate Spacer	1	59	973-008-0	Roll Pin (2 X 8)	1	95	178-350-0	Driver Anvil	1
24	147-036-2	Hammer Casing Connector	1	60	973-010-0	Roll Pin (2 X 10)	1	96	011-351-1	Bit Sleeve (1/8)	1
25	150-439-9	Front Casing	1	61	973-014-0	Roll Pin (2 X 14)	1	97	011-352-0	Bit Spacer	1
26	190-328-6	Anvil Bushing	1	62	973-040-0	Roll Pin (1.5 X 5)	2	98	976-327-0	Spring (13.5 X 11 X 0.9)	1
27	150-384-9	Hammer Casing Band	1	63	975-752-0	Adjusting Spacer (15 X 10 X T)	1	99	976-455-0	Spring (3.1 X 7.4 X 0.45)	1
28	150-901-9	Rear Liner Plate	1	64	976-006-0	Spring (3 X 5 X 0.4)	1	100	976-314-0	Spring (4.3 X 11 X 0.4)	1
29	190-902-6	Liner	1	65	976-457-0	Spring (7 X 12 X 0.9)	1	101	978-117-0	Snap Ring (11.7 X 1)	1
30	150-546-5	Piston	1	66	976-791-0	Spring (3.3 X 21 X 0.4) WPC	2	102	981-002-0	Ball (1/8)	1
31	150-557-5	Piston Bushing	1	67	976-423-0	Spring (3.1 X 7.2 X 0.45)	1				
32	187-130-3	Piston Rod (2.1 X 73.8)	1	68	976-451-0	Spring (4.4 X 11 X 0.45)	1				
33	178-319-8	Anvil	1	69	978-090-0	Snap Ring (9 X 0.7)	1				
34	190-440-6	Driving Blade	2	70	979-317-0	Inner Snap Ring (IRTW-17)	1				
35	150-807-6	Spacer	1	71	981-002-0	Ball (1/8)	1				
36	150-904-9	Front Liner Plate	1	72	981-225-0	Ball (2.5MM)	1				



### ACCESSORIES

105	939-109-0	Allen Wrench (2)	1
106	916-810-0	(+) Double Bit (No.2 X 7.5)	1

### FOOTNOTES

■ = Parts for Alpha T62DMI

AIMCO also offers a complete line of standard & special adapters, bits, sockets and extensions.



# AIMCO

When ordering spare parts, please specify tool type, part number and description.

10000 SE PINE, PORTLAND, OR 97216  
503-254-6600 FAX 503-255-2615