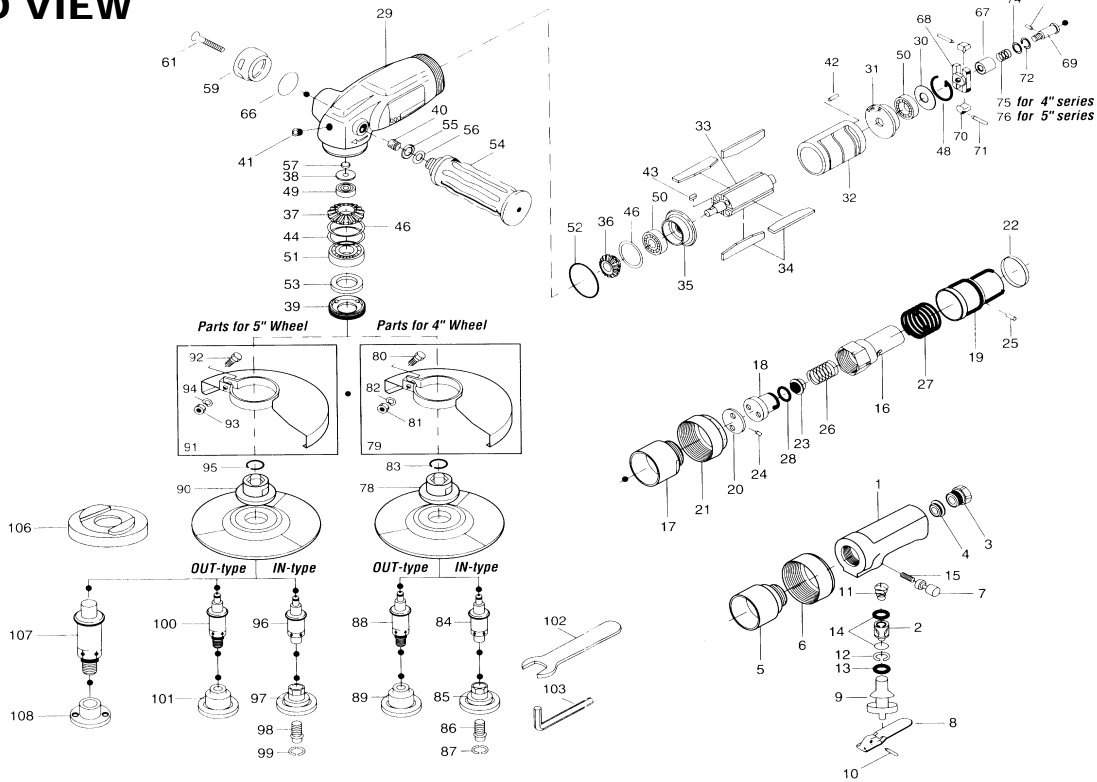


# EAG-104-135 / EAG-105-108 INDUSTRIAL ANGLE GRINDERS

## EXPLODED VIEW



## PARTS LIST – FOR REFERENCE ONLY

Index	Part	Index	Part	Index	Part	Index	Part	Index	Part	Index	Part
Number	Description	Number	Description	Number	Description	Number	Description	Number	Description	Number	Description
1	Handle (Lever Type)	26	Spring	53	Felt Ring	85	Wheel Nut Flange				
2	Valve Bushing	27	Spring	54	Dead Handle	86	Hexagon Socket Flange				
3	Air Inlet Bushing	28	O-Ring	55	Flat Washer	87	Inner Snap Ring				
4	Filter	29	Casing	56	Spring Washer	88	Wheel Spindle				
5	Valve Body Connector	30	Rear Plate Spacer	57	Oyster Snap Ring	89	Wheel Nut Flange				
6	Valve Body Nut	31	Rear Plate	58	Exhaust Stack	90	Wheel Holder Flange				
7	Safety Pin	32	Cylinder	61	Allen Head Screw	91	Wheel Guard				
8	Valve Lever	33	Rotor	66	O-Ring	92	Hexagon Head Bolt				
9	Valve	34	Blade	67	Governor Valve	93	Hexagon Nut				
10	Roll Pin	35	Front Plate	68	Governor Cage	94	Spring Washer				
11	Cone Spring	36	Driving Gear	69	Governor Spindle	95	Snap Ring				
12	Inner Snap Ring	37	Driven Gear	70	Governor Weight	96	Wheel Spring				
13	O-Ring	38	Casing Rear Cover	71	Roll Pin	97	Wheel Nut Flange				
14	O-Ring	39	Casing Front Cover	72	Adjusting Spacer	98	Hexagon Socket Flange				
15	Spring	40	Hell Sert	73	Pin	99	Inner Snap Ring				
16	Valve Body	41	Allen Head Plug	74	Spacer	100	Wheel Spindle				
17	Valve Body Connector	42	Valve Body Connector	75	4" Series Spring	101	Wheel Nut Flange				
18	Valve	43	Key	76	5" Series Spring	102	Spanner				
19	Valve Handle	44	Spacer	78	Wheel Holder Flange	103	Allen Wrench				
20	Valve Bushing	45	Adjusting Spacer	79	Wheel Guard	105	Connecting Screw				
21	Valve Body Nut	48	Snap Ring	80	Hexagon Head Bolt	106	Wheel Holder Flange				
22	Band	49	Ball Bearing	81	Hexagon Nut	107	Wheel Spindle				
23	Filter	50	Ball Bearing	82	Spring Washer	108	Wheel Nut Flange				
24	Pin	51	Ball Bearing	83	Snap Ring						
25	Roller Pin	52	O-Ring	84	Wheel Spindle						

### TECHNICAL DATA

	RPM Free Speed	CFM Max Air Flow	Weight (lbs.)	Wheel Capacity (in)	Spindle thread
EAG-104-135	13,500	34	2.9	4	3/8-24
EAG-105-108	10,800	34	3.3	5	5/8-11

### FOOTNOTES

- Indicates 104-135 part
- ▲ Indicates 105-108 part



When ordering spare parts, please specify tool type, part number and description

10000 SE PINE, PORTLAND, OR 97216  
503-254-1749 FAX 503-256-4026

REVISED 7/99