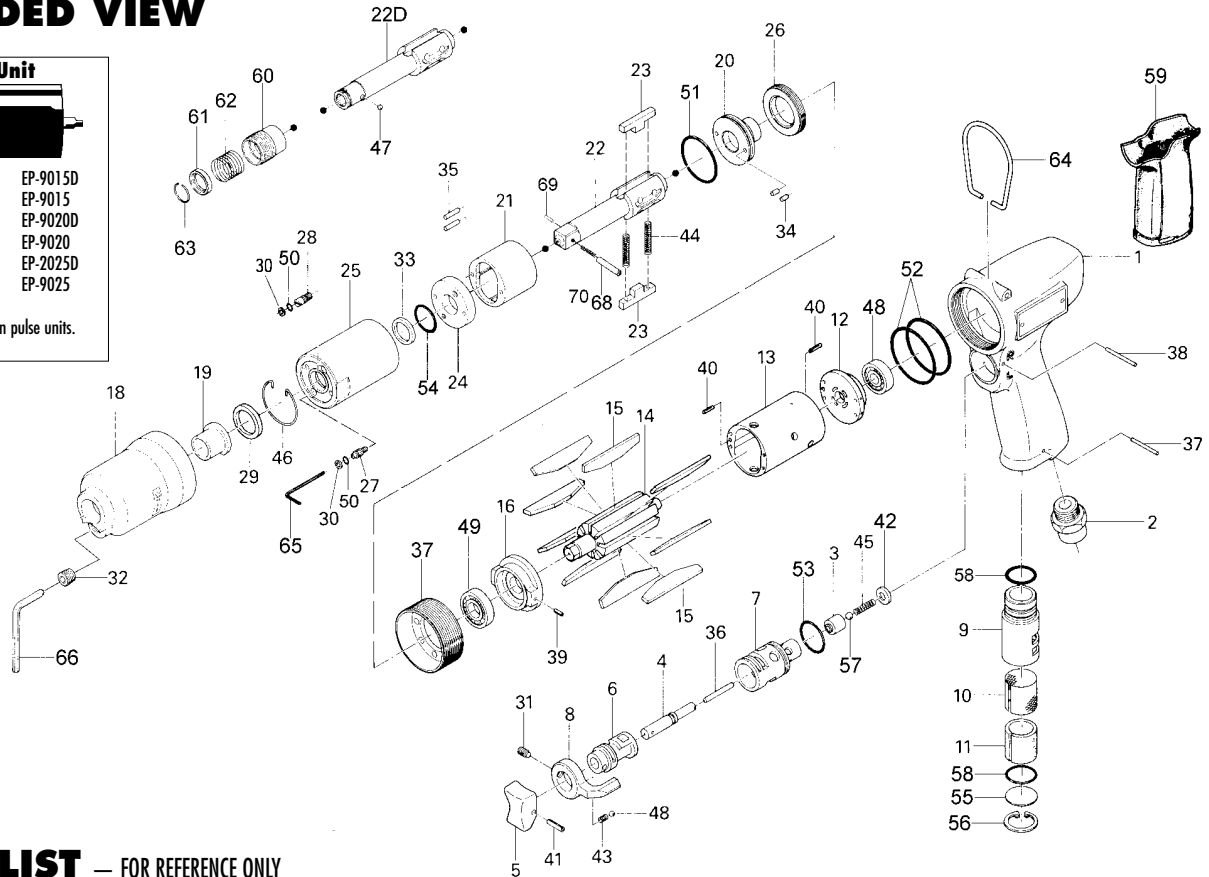
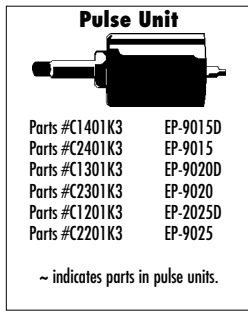


EP-9015(D), EP-9020(D), EP-9025(D) PULSE TOOLS

EXPLODED VIEW



PARTS LIST — FOR REFERENCE ONLY

| Index Number | Part Number | Description | Qty. | | Index Number | Part Number | Description | Qty. | | Index Number | Part Number | Description | Qty. |
|--------------|-------------|-------------------------|------|---------|--------------|--------------|----------------------------------|------|---------|--------------|--------------|---------------------------|------|
| 1 | C120100100 | Housing | 1 | ▲,◆ | 22~ | C120102200 | Anvil 1/4" QC | 1 | ◆ | 49 | C120104900* | Ball Bearing (EE-3) | 1 |
| 1 | C130100100 | Housing | 1 | ●,○ | 22~ | C130102200 | Anvil 1/4" QC | 1 | □,○ | 50~ | C120105000** | O-Ring (1.42 x 1.53) | 2 |
| 1 | C140100100 | Housing | 1 | ■,□ | 22~ | C220102200 | Anvil (3/8" SQ Drive) | 1 | ▲ | 51~ | C120105100** | O-Ring (20.35 x 1.78) | 1 |
| 2 | C120100200 | Air Inlet Bushing | 1 | | 22~ | C230102200 | Anvil (3/8" SQ Drive) | 1 | ■,● | 52 | C120105200* | O-Ring (33.05 x 1.78) | 2 |
| 3 | C120100300 | Valve | 1 | | 23~ | C120102300 | Anvil Blade | 2 | ▲,◆ | 52 | C140105200 | O-Ring (33.05 x 1.78) | 2 |
| 4 | C120100400 | Valve Rod Bushing | 1 | | 23~ | C130102300 | Anvil Blade | 2 | ■,□,○ | 53 | C120105300 | O-Ring (1.3 x 1.5) | 1 |
| 5 | C120100500 | Trigger | 1 | | 24~ | C120102400 | Front Liner Plate | 1 | | 54~ | C120105400** | O-Ring (P12) | 2 |
| 6 | C120100600 | Reverse Valve | 1 | | 25~ | C120102500 | Liner Casing | 1 | ▲,◆ | 55 | C120105500 | Round Plate | 1 |
| 7 | C120100700 | Reverse Valve Bushing | 1 | | 25~ | C130102500 | Liner Casing | 1 | ■,□,○ | 56 | C120105600 | Inner Snap Ring (IRTW-18) | 1 |
| 8 | C120100800 | Reverse Lever | 1 | | 26~ | C120102600 | Liner Casing Setter | 1 | | 57 | 0427000000 | Ball | 1 |
| 9 | C120100900 | Exhaust Stack | 1 | | 27~ | C120102700 | Relief Valve Spindle | 1 | | 58 | C120105800 | O-Ring (15.5 x 1.5) | 2 |
| 10 | C120101000 | Silencer | 1 | | 28~ | C120102800 | Oil Plug | 1 | | 59 | C120105900 | Handle Cover | 1 |
| 11 | C120101100* | Filter | 1 | | 29 | C120102900 | Anvil Front Spacer | 1 | | 60~ | C120106000 | Bit Sleeve | 1 |
| 12 | C120101200 | Rear Plate | 1 | ●,○,▲,◆ | 30~ | C120103000** | Supporting Ring (2.6 x 4.5 x 1)2 | 2 | | 61~ | C120106100 | Bit Spacer | 1 |
| 12 | C140101200 | Rear Plate | 1 | ■,□ | 31 | C120103100 | Allen Head Dog Point Screw | 1 | | 62~ | C120106200 | Spring | 1 |
| 13 | C120101300 | Cylinder | 1 | ▲,◆ | 32 | 8045000000 | Allen Head Plug (NPT 1/16) | 1 | | 63 | C120106300 | Snap Ring | 1 |
| 13 | C130101300 | Cylinder | 1 | ●,○ | 33~ | C120103300** | Supporting Ring | 1 | | 64 | 110100000L | Hook | 1 |
| 13 | C140101300 | Cylinder | 1 | ■,□ | 34~ | C120103400 | Pin (H) (2.45 x 4.5) | 2 | | 68~ | C120106800 | Pin | 1 |
| 14 | C120101400 | Rotor | 1 | ▲,◆ | 35~ | C120103500 | Pin (H) (2.45 x 11) | 2 | | 69~ | C120106900 | Iron Pad | 1 |
| 14 | C130101400 | Rotor | 1 | ●,○ | 36 | C120103600 | Pin (G) (2 x 12) | 1 | | 70~ | C120107000 | Spring | 1 |
| 14 | C140101400 | Rotor | 1 | ■,□ | 37 | C120103700 | Pin (2.5 x 22) | 1 | | | | | |
| 15 | C120101500* | Blade | 9 | ▲,◆ | 38 | C120103800 | Pin (2 x 22) | 1 | | | | | |
| 15 | C130101500* | Blade | 9 | ●,○ | 39 | 1410000000 | Roll Pin (2 x 6) | 1 | | | | | |
| 15 | C140101500* | Blade | 9 | ■,□ | 40 | C120104000 | Roll Pin (2X8) | 2 | ●,○,▲,◆ | | | | |
| 16 | C120101600 | Front Plate | 1 | ●,○,▲,◆ | 40 | C140104000 | Roll Pin (1.75X6) | 2 | ■,□ | | | | |
| 16 | C140101600 | Front Plate | 1 | ■,□ | 41 | C120104100 | Roll Pin (2 x 14) | 1 | | | | | |
| 17 | C120101700 | Hammer Casing Connector | 1 | | 42 | C120104200 | Valve Cover | 1 | | | | | |
| 18 | C120101800 | Front Casing | 1 | ▲,◆ | 43 | C120104300 | Spring (3 x 5) | 1 | | | | | |
| 18 | C130101800 | Front Casing | 1 | ■,□,○ | 44~ | C120104400** | Spring (3.5 x 21) WPC | 2 | | | | | |
| 19 | C120101900 | Anvil Bushing | 1 | | 45 | C120104500 | Spring (3.2 x 13) | 1 | | | | | |
| 20~ | C120102000 | Rear Liner Plate | 1 | | 46~ | C120104600 | Snap Ring | 1 | | | | | |
| 21~ | C120102100 | Liner | 1 | ▲,◆ | 47 | 0420000000 | Ball (1/8) | 1 | | | | | |
| 21~ | C130102100 | Liner | 1 | ■,□,○ | 48 | C120104800* | Ball Bearing (EE-2) | 1 | | | | | |

ACCESSORIES

| | | | |
|----|------------|-----------------------|---|
| 65 | C120106500 | Allen Wrench (1.5 mm) | 1 |
| 66 | C120106600 | Allen Wrench (4 mm) | 1 |

■ = indicates EP-9015 part □ = indicates EP-9015D part
 ● = indicates EP-9020 part ○ = indicates EP-9020D part
 ▲ = indicates EP-9025 part ◆ = indicates EP-9025D part

FOOTNOTES

* Parts available in Motor repair kit (-RK*)
 ** Parts available in Pulse repair kit (-PRK*)



When ordering spare parts, please specify tool type, part number and description.
10000 SE PINE, PORTLAND, OR 97216
503-254-6600 FAX 503-254-7215