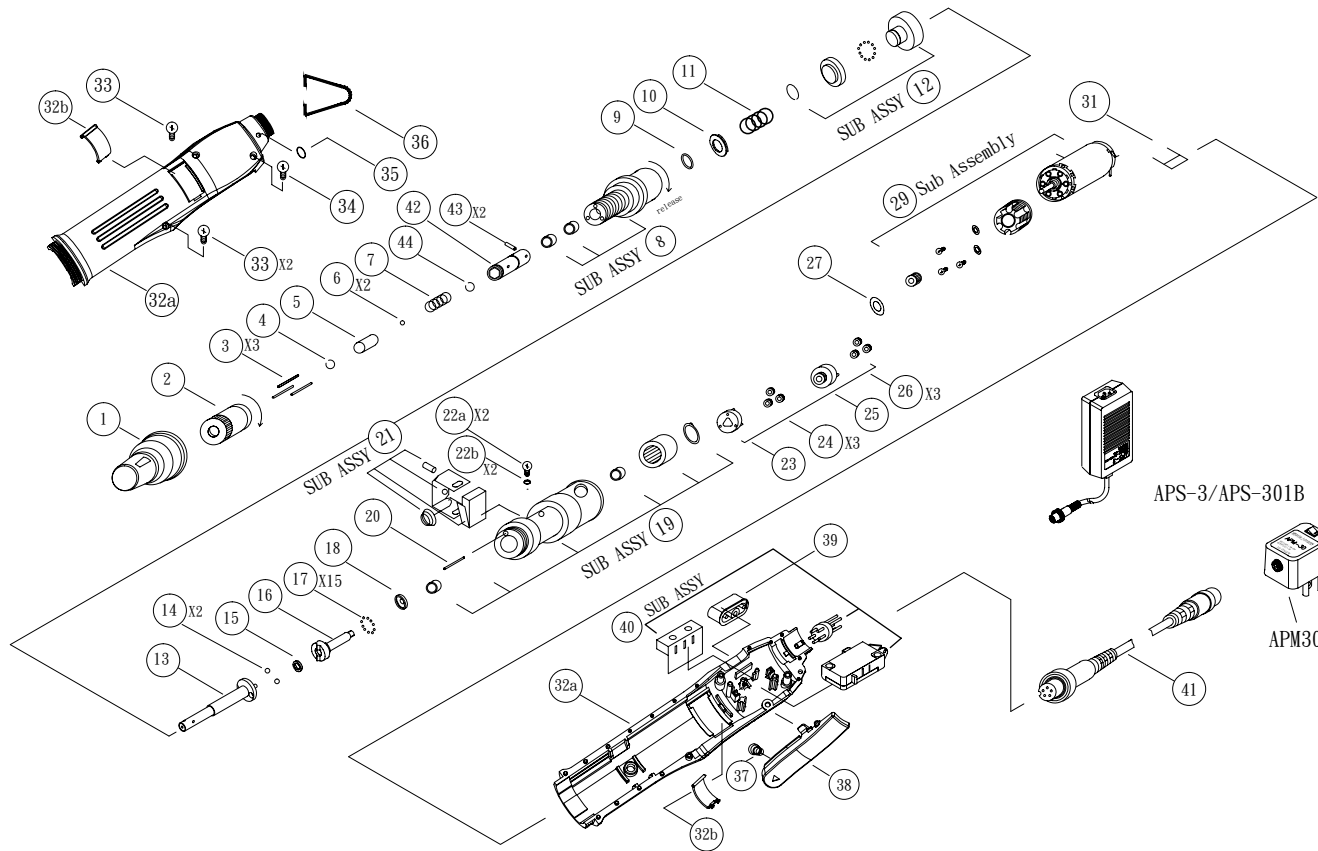


# EPTS-E4000 1/4" CLUTCH SHUT OFF SCREWDRIVER

## EXPLODED VIEW



## PARTS LIST — FOR REFERENCE ONLY

Index Number	Part Number	Description	Qty.	Index Number	Part Number	Description	Qty.	Index Number	Part Number	Description	Qty.
1	6H1053	Retaining Ring	1	21	2A7016	Micro Switch Sub Assembly	1	41	2W2122-2	DC Cord 5P-5P(PVC)	1
2	4J1071-1	Regulating Handle	1	22a	8T4064	Screw (2.6 x L = 6)	2	42	4C1191	Bit Holder 1/4"	1
3	4N1026	Push Pin L = 18.8	3	22b	4W1712	Star Washer	2	43	4N4012	Spring Cotter 1/4"	2
4	4U1052	Snap Ring (1.2 x 9.2) 1/4"	1	23	4L2851	Second Gear Cage	1	44	4U1054	Snap Ring 1/4"	1
5	4H2081	Bit Slide Sleeve 1/4"	1	24	4G2654	Second Planet Gear (10T)	3	<b>ACCESSORIES</b>			
6	4B1026	Ball (2.5) 1/4"	2	25	4L1654	First Gear Cage	1	4H1089	Torque Cover	1	
7	4S3074	Sleeve Spring (0.6) 1/4"	1	26	4G2654	First Planet Gear (10T)	3	4A9131	Right Angle Sub Assembly	1	
8	4A1025	Hammer Casing Sub Assembly	1	29	2A1112	Motor Sub Assembly	1	2W1024	AC Cord for U.S.A.	1	
9	4W6015	Washer (9.5 x 7 x T = 0.2)	1-2	31	2C6616	Capacitor (0.1uF/100V)	1	2W1043	AC Cord for U.K.	1	
10	4W6411	Washer (15.7 x 11.05)	1	32	6A1034	Plastic Housing Set Ass'y (Blue)	1	2W1054	AC Cord for Australia	1	
11	4S1073	Spring (1.4)	1	32a	6Z1224	Plastic Housing Set (Blue)	1	2W1064	AC Cord for Europe	1	
12	4A5025	Retainer Sub Assembly	1	32b	6C5024	Carbon Maintenance (Blue)	2	2W1186	AC Cord for U.K.	1	
13	4C1025	Anvil 1/4"	1	33	8T1624	Screw (2.0 x L = 6)	2	<div style="border: 1px solid black; padding: 5px; width: fit-content; margin: auto;"> <b>AIMCO also offers a complete line of standard &amp; special adapters, bits, sockets, and extensions</b> </div>			
14	4B1029	Ball (4.0)	2	34	8T1663	Screw (2.6 x L = 5)	1				
15	4E1023	Ball Bearing (3 x 8 x T = 4) (693)	1	35	4F1023	Hanger Ring	1				
16	4K2047	Hammer 1.95 mm (Height)	1	36	4F1012	Hanger Ring	1				
17	4B1024	Ball (2.0)	15	37	4S3051	Trigger Spring (0.55)	1				
18	4E7011	Retainer	1	38	6P4013	Forward Trigger	1				
19	4A7034	Gear Housing Sub Assembly	1	39	6P4023	Reverse Trigger	1				
20	4N1143	Roller Pin (2.0 x L = 12.8)	1	40	2A6039A	Pwb Sub Assembly	1				

### FOOTNOTES



10000 SE PINE  
 PORTLAND, OR 97216  
 503-254-6600  
 FAX 503-255-2615

When ordering spare parts, please specify tool type, part number, and description