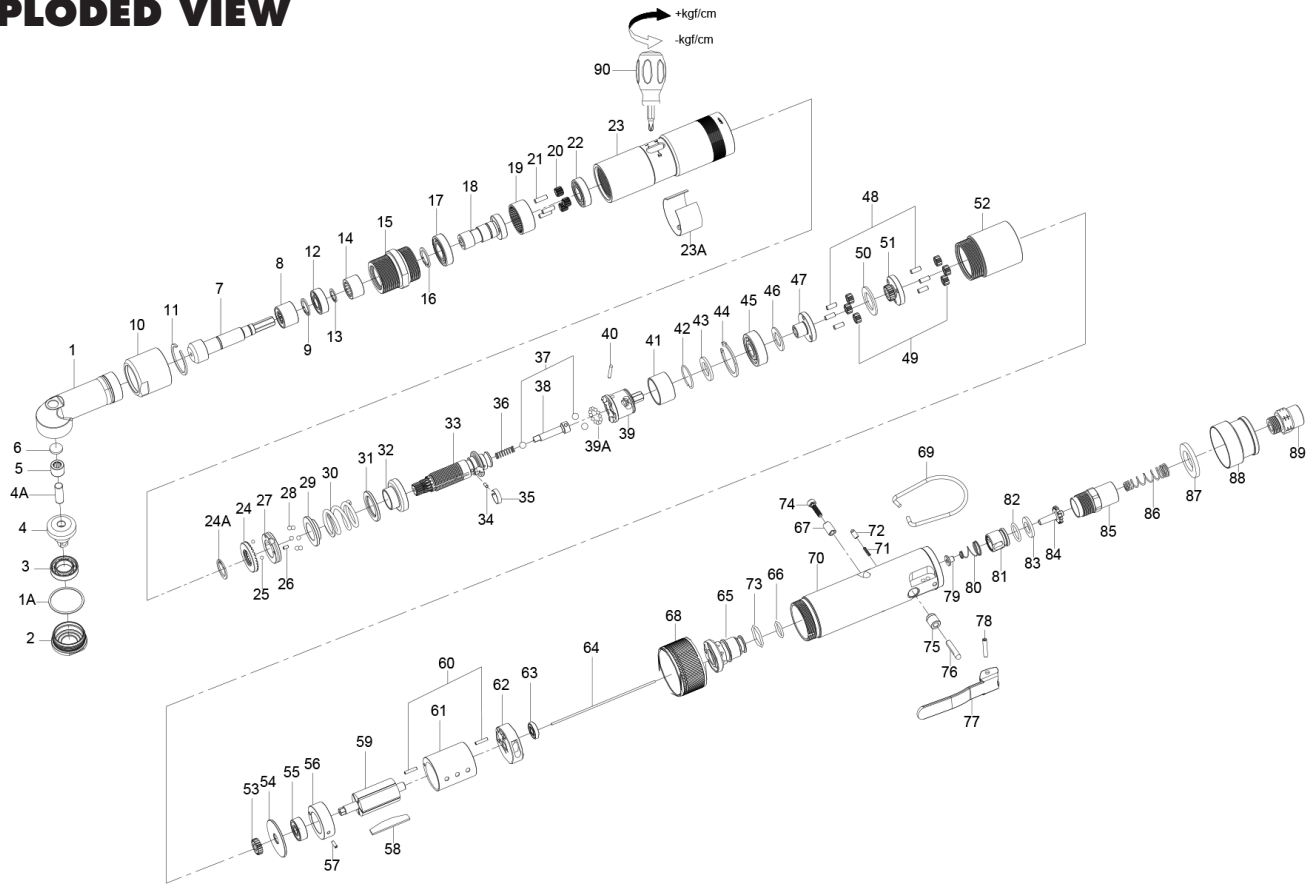


# EPTS-N34003-25, -38 SHUTOFF ANGLE NUTRUNNER

## EXPLODED VIEW



## PARTS LIST — FOR REFERENCE ONLY

| Index Number | Part Number        | Description                       | Qty. | Index Number | Part Number        | Description           | Qty.  | Index Number | Part Number       | Description            | Qty. |
|--------------|--------------------|-----------------------------------|------|--------------|--------------------|-----------------------|-------|--------------|-------------------|------------------------|------|
| 1            | EPTS-N34003-25-1   | Housing                           | 1    | 27           | EPTS-N34003-25-27  | Adjustment Lock Ring  | 1     | 59           | EPTS-N34003-25-59 | Rotor                  | 1    |
| 1A           | EPTS-N34003-25-1A  | Washer                            | 1    | 28           | EPTS-N34003-25-28  | Steel Ball            | 6 ●■  | 60           | EPTS-N34003-25-60 | Pin                    | 2    |
| 2            | EPTS-N34003-25-2   | Housing Cover                     | 1    | 29           | EPTS-N34003-25-29  | Spring Collar         | 1     | 61           | EPTS-N34003-25-61 | Cylinder               | 1    |
| 3            | 982-870-0          | Ball Bearing 6801                 | 1    | 30           | EPTS-N34003-25-30  | Torque Setting Spring | 1 ●■  | 62           | EPTS-N34003-25-62 | Rear End Plate         | 1    |
| 4            | EPTS-N34003-25-4   | Standard Anvil for EPTS-N34003-25 | 1    | 31           | EPTS-N34003-25-31  | Spacer                | 1     | 63           | BBMR126           | Ball Bearing MR126     | 1    |
| 4            | EPTS-N34003-38-4   | Standard Anvil for EPTS-N34003-38 | 1    | 32           | EPTS-N34003-25-32  | Central Clutch        | 1     | 64           | EPTS-N34003-25-64 | Throttle Valve Plunger | 1    |
| 4A           | EPTS-N34003-25-4A  | Pin                               | 1    | 33           | EPTS-N34003-25-33  | Cam Shaft             | 1     | 65           | EPTS-N34003-25-65 | Reverse Valve          | 1    |
| 5            | BB609ZZ            | Bearing 0609                      | 1    | 34           | EPTS-N34003-25-34  | Pin                   | 1     | 66           | EPTS-N34003-25-66 | O-Ring                 | 1    |
| 6            | EPTS-N34003-25-6   | Housing Plate                     | 1    | 35           | EPTS-N34003-25-35  | Band                  | 1     | 67           | EPTS-N34003-25-67 | Bushing                | 1    |
| 7            | EPTS-N34003-25-7   | Driving Shaft Gear                | 1    | 36           | EPTS-N34003-25-36  | Spring                | 1 ●■  | 68           | EPTS-N34003-25-68 | Reverse Knob           | 1    |
| 8            | 988-370-0          | Bearing 1012                      | 1    | 37           | EPTS-N34003-25-37  | Steel Ball            | 3 ●■  | 69           | EPTS-N34003-25-69 | Hanger                 | 1    |
| 9            | EPTS-N34003-25-9   | Retainer                          | 1    | 38           | EPTS-N34003-25-38  | Pilot Pin             | 1     | 70           | EPTS-N34003-25-70 | Motor Case             | 1    |
| 10           | EPTS-N34003-25-10  | Coupling Nut                      | 1    | 39           | EPTS-N34003-25-39  | Rear Clutch           | 1     | 71           | EPTS-N34003-25-71 | Spring                 | 1 ●■ |
| 11           | EPTS-N34003-25-11  | Retainer                          | 1    | 39A          | EPTS-N34003-25-39A | Steel Ball            | 12 ●■ | 72           | EPTS-N34003-25-72 | Pin                    | 1    |
| 12           | 982-035-0          | Ball Bearing 698                  | 1    | 40           | EPTS-N34003-25-40  | Pin                   | 1     | 73           | EPTS-N34003-25-73 | O-Ring                 | 1    |
| 13           | EPTS-N34003-25-13  | Retainer                          | 1    | 41           | EPTS-N34003-25-41  | Ball Holder           | 1     | 74           | EPTS-N34003-25-74 | Screw                  | 1    |
| 14           | BB1210             | Bearing 1210                      | 1    | 42           | EPTS-N34003-25-42  | Retainer              | 1     | 75           | EPTS-N34003-25-75 | Bushing                | 1    |
| 15           | EPTS-N34003-25-15  | Connecting Screw                  | 1    | 43           | EPTS-N34003-25-43  | Washer                | 1     | 76           | EPTS-N34003-25-76 | Valve Stem             | 1    |
| 16           | EPTS-N34003-25-16  | Retainer                          | 1    | 44           | EPTS-N34003-25-44  | Retainer              | 1     | 77           | EPTS-N34003-25-77 | Trigger                | 1    |
| 17           | 982-902-0          | Ball Bearing 6901                 | 1    | 45           | 982-100-0          | Ball Bearing 6000     | 1     | 78           | EPTS-N34003-25-78 | Spring Pin             | 1    |
| 18           | EPTS-N34003-25-18  | Work Spindle                      | 1    | 46           | EPTS-N34003-25-46  | Washer                | 1     | 79           | EPTS-N34003-25-79 | Handle Bushing         | 1    |
| 19           | EPTS-N34003-25-19  | Ring Gear                         | 1    | 47           | EPTS-N34003-25-47  | Front Gear Head       | 1     | 80           | EPTS-N34003-25-80 | Spring                 | 1 ●■ |
| 20           | EPTS-N34003-25-20  | Planet Gear                       | 3    | 48           | EPTS-N34003-25-48  | Pin                   | 6     | 81           | EPTS-N34003-25-81 | Bushing                | 1    |
| 21           | EPTS-N34003-25-21  | Pin                               | 3    | 49           | EPTS-N34003-25-49  | Planet Gear           | 6     | 82           | EPTS-N34003-25-82 | O-Ring                 | 1 ●■ |
| 22           | 982-901-0          | Ball Bearing 6900                 | 1    | 50           | EPTS-N34003-25-50  | Washer                | 1     | 83           | EPTS-N34003-25-83 | Washer                 | 1    |
| 23           | EPTS-N34003-25-23  | Clutch Housing                    | 1    | 51           | EPTS-N34003-25-51  | Rear Gear Head        | 1     | 84           | EPTS-N34003-25-84 | Throttle Valve         | 1    |
| 23A          | EPTS-N34003-25-23A | Rubber Ring                       | 1    | 52           | EPTS-N34003-25-52  | Gear Housing          | 1     | 85           | EPTS-N34003-25-85 | Air Inlet              | 1    |
| 24           | EPTS-N34003-25-24  | Adjustment Nut                    | 1    | 53           | EPTS-N34003-25-53  | Pinion Gear           | 1     | 86           | EPTS-N34003-25-86 | Spring                 | 1 ●■ |
| 24A          | EPTS-N34003-25-24A | Retainer                          | 1    | 54           | EPTS-N34003-25-54  | Washer                | 1     | 87           | EPTS-N34003-25-87 | Muffler Element        | 1    |
| 25           | EPTS-N34003-25-25  | Steel Ball                        | 2 ●■ | 55           | 982-013-0          | Ball Bearing 606      | 1     | 88           | EPTS-N34003-25-88 | Exhaust Deflector      | 1    |
| 26           | EPTS-N34003-25-26  | Pin                               | 1    | 56           | EPTS-N34003-25-56  | Front End Plate       | 1     | 89           | EPTS-N34003-25-89 | Air Inlet              | 1    |
|              |                    |                                   |      | 57           | EPTS-N34003-25-57  | Pin                   | 1     | 90           | EPTS-N34003-25-90 | Screwdriver            | 1    |
|              |                    |                                   |      | 58           | EPTS-N34003-25-58  | Rotor Blade           | 5 ●■  |              |                   |                        |      |



10000 SE PINE  
PORTLAND, OR 97216  
503-254-6600  
FAX 503-255-2615

When ordering spare parts, please specify tool type, part number, and description

### FOOTNOTES

- = Components in Tune Up Kit EPTS-N34003-25-RK
- = Components in Tune Up Kit EPTS-N34003-38-RK