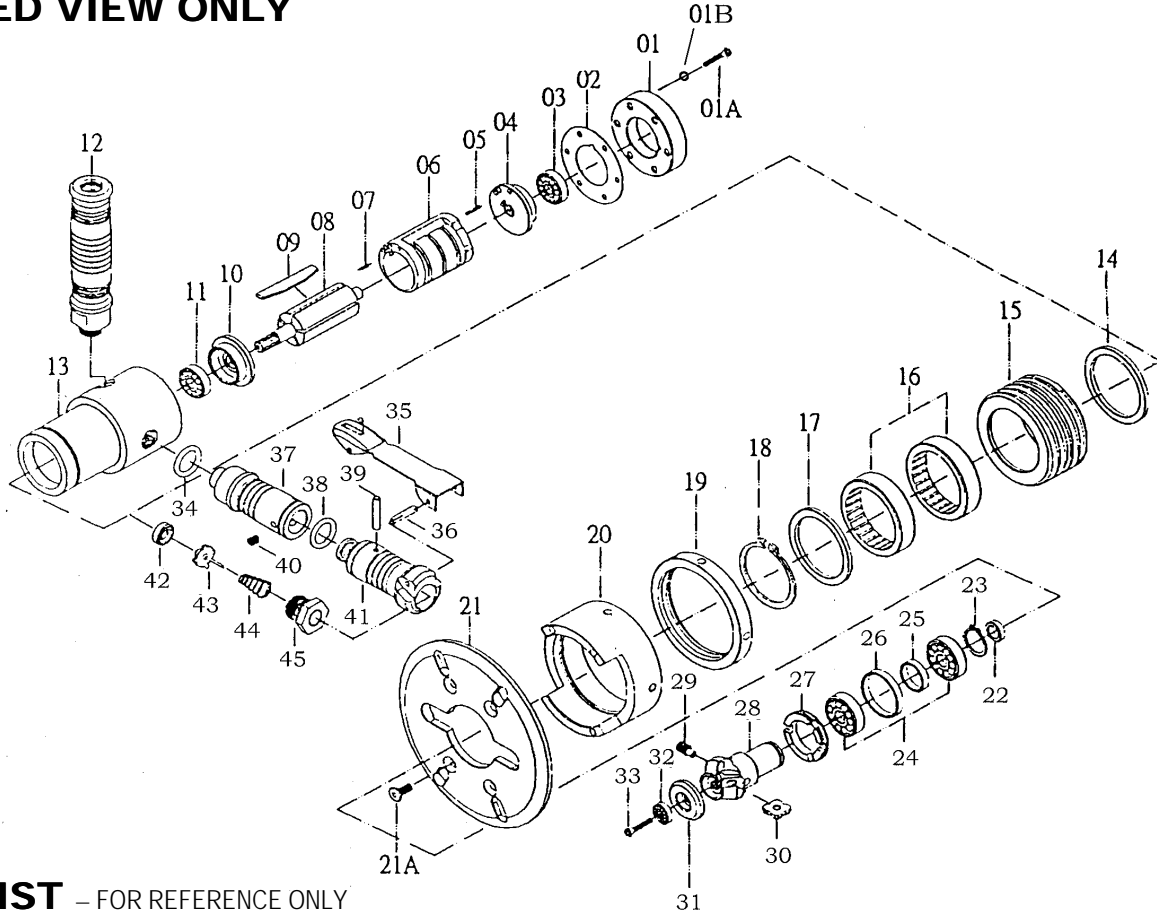


EVE-317 VERTICAL EDGER

EXPLODED VIEW ONLY



PARTS LIST – FOR REFERENCE ONLY

Index Number	Part Number	Description	Qty.	Index Number	Part Number	Description	Qty.	Index Number	Part Number	Description	Qty.
01	95814-01	MOTOR CASE COVER	1	18	95814-18	RETAINER RING	1	35	95814-35	SAFETY LEVER SET	1
01A, 01B	95814-01A	SCREW / WASHER	6	19	95814-19	ADJUSTING RING	1	36	95814-36	PIN	1
02	95814-02	GASKET	6	20	95814-20	STAY RING	1	37	95814-37	EXTENSION TUBE	1
03	95814-03	REAR ROTOR BEARING	1	21	95814-21	PLATE	1	38	95814-38	O-RING	1
04	95814-04	REAR END PLATE	1	21A	95814-21A	SET SCREW	4	39	95814-39	PIN	1
05	95814-05	PIN	1	22	95814-22	FRONT END PLATE WASHER	1	40	95814-40	SET SCREW	3
06	95814-06	CYLINDER	1	23	95814-23	RETAINER RING	1	41	95814-41	AIR INLET VALVE	1
07	95814-07	PIN	1	24	95814-24	BEARING	2	42	95814-42	VALVE SEAT	1
08	95814-08	ROTOR	1	25	95814-25	SPACER	1	43	95814-43	VALVE	1
09	95814-09	BLADE	1	26	95814-26	SPACER	1	44	95814-44	THROTTLE VALVE SPRING	1
10	95814-10	FRONT END PLATE	5	27	95814-27	LOCK NUT	1	45	95814-45	AIR INLET	1
11	95814-11	FRONT ROTOR BEARING	1	28	95814-28	HEAD SHAFT	1	50*	95814-50	C-SPANNER	2
12	95814-12	EXHAUST HANDLE	1	29	95814-29	SCREW	3	51*	95814-51	BAR ROUND	1
13	95814-13	MOTOR CASE	1	30	Eve-317C6	CUTTING TIPS	3	52*	95814-52	GAGE	1
14	95814-14	WASHER	1	31	95814-31	GUIDER	1	53*	95814-53	WRENCH HEXAGONAL	1
15	95814-15	COLLAR	1	32	95814-32	BEARING	1	54*	95814-54	PIPE INTAKE	1
16	95814-16	NEEDLE BEARING	2	33	95814-33	SCREW	1	TK	95814-TK	TUNE UP KIT (*)	1
17	95814-17	WASHER	1	34	95814-34	O-RING	1				

TECHNICAL DATA

	RPM Free Speed	Minimum Cutting Radius	kg Weight	Cutting Rate (M/min)
EVE-317	11,500	17mm	3.8	2-3

FOOTNOTES

When ordering spare parts, please specify tool type, part number and description

10000 SE PINE, PORTLAND, OR 97216
503-254-1749 FAX 503-256-4026

REVISED 7/99

