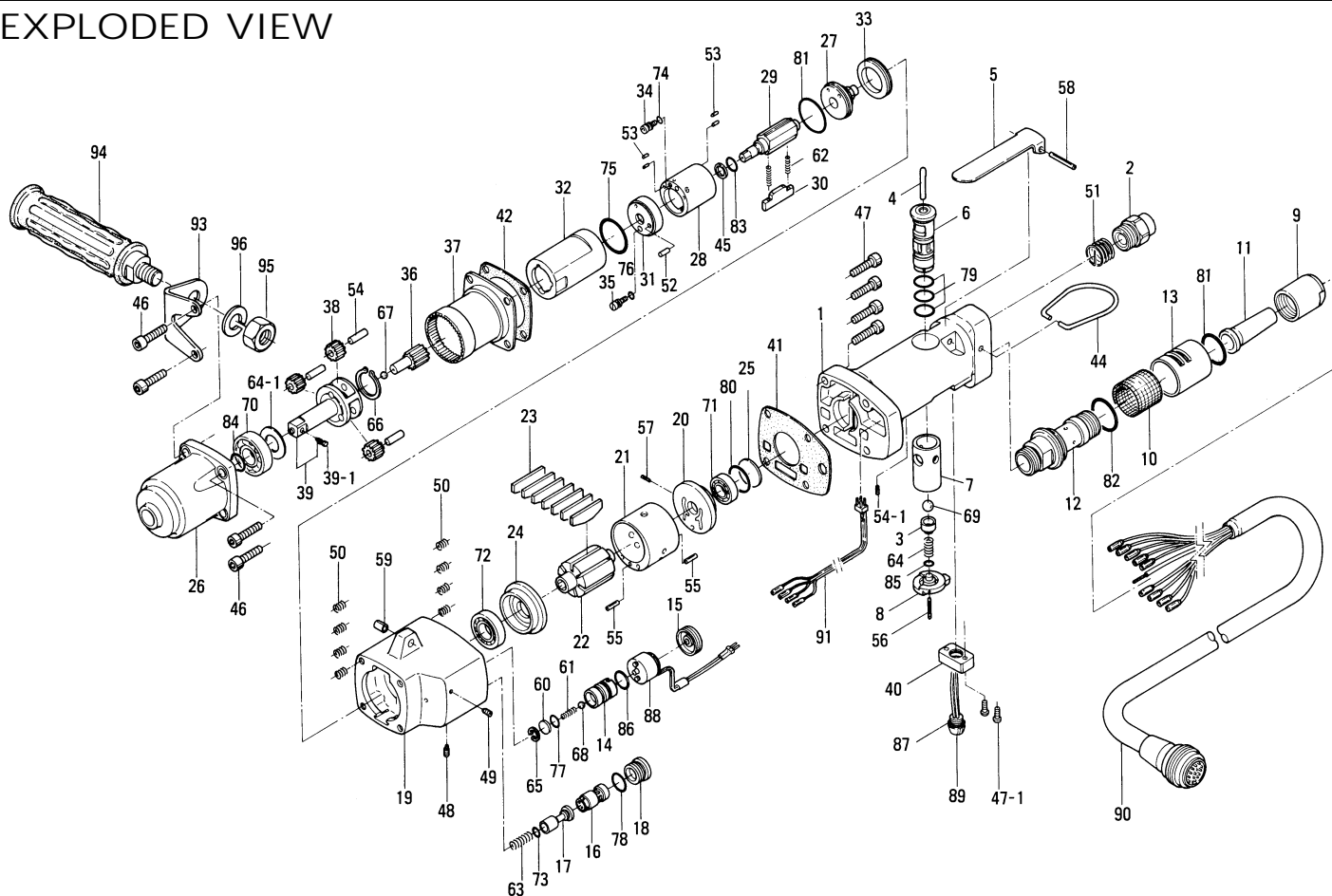


U60SEC OIL-PULSE TOOLS

EXPLODED VIEW



PARTS LIST — FOR REFERENCE ONLY

Index Number	Part Number	Description	Qty.
1	192-011-5	Handle	1
2	185-091-7	Air Inlet Bushing	1
3	185-100-1	Valve	1
4	192-104-5	Valve Rod	1
5	500-107-1	Valve Lever	1
6	192-210-5	Reverse Valve	1
7	180-211-7	Reverse Valve Bushing	1
8	418-212-1	Reverse Lever	1
9	182-018-8	Cap	1
10	193-042-5	Silencer	1
11	182-562-8	Stopper	1
12	193-780-5	Exhaust Bushing	1
13	193-782-6	Exhaust Cover	1
14	192-147-5	Stop Valve Bushing	1
15	192-149-5	Stop Valve Plug	1
16	193-253-5	Shut-Off Valve Bushing	1
17	177-254-0	Shut-Off Valve	1
18	193-927-5	Shut-Off Valve Cover	1
19	192-025-5	Casing	1
20	193-285-5	Rear Plate	1
21	193-286-5	Cylinder	1
22	193-287-5	Rotor	1
23	193-288-8	Blade	7
24	193-289-5	Front Plate	1
25	193-291-6	Rear Plate Spacer	1
26	193-439-5	Front Casing	1
27	193-901-5	Liner Rear Plate	1
28	191-902-6	Liner	1
29	191-319-6	Anvil	1
30	198-440-1	Driving Blade	1
31	191-904-6	Liner Front Plate	1
32	191-905-6	Liner Casing	1
33	193-906-5	Liner Casing Setter	1
34	191-970-6	Relief Valve	1
35	194-742-0	Oil Plug	1

Index Number	Part Number	Description	Qty.
36	193-446-5	Anvil Gear	1
37	193-465-5	Internal Gear	1
38	193-470-5	Planet Gear	3
39	891-340-1	Socket Anvil Assembly (P)	1
39-1	891-300-1	Socket Pin Assembly	1
40	192-718-5	LED Lump Bracket	1
41	192-854-5	Casing Packing	1
42	193-867-5	Front Casing Packing	1
44	010-790-1	Suspension Ring	1
45	944-007-0	Back-up Ring (7.85 x 11.1 x 1)	1
46	945-118-0	Allen Head Bolt (M5 x 18)	4
47	945-120-0	Allen Head Bolt (M5 x 20)	4
47-1	948-001-0	Round Head Screw (M2.6 x 8)	2
48	952-006-0	Allen Head Dog Point Screw (M3 x 6)	1
49	954-005-0	Allen Head Cone Screw (M3 x 5)	1
50	965-011-0	Heli-Sert (M5 x 1.5D)	8
51	965-073-0	Heli-Sert (UNF5/8 N6)	1
52	969-449-0	Pin (G) (3 x 6)	1
53	970-091-0	Pin (H) (2 x 4.5)	3
54	972-166-0	Roller Pin (5 x 16)	4
54-1	973-005-0	Roll Pin (2 x 5)	1
55	973-110-0	Roll Pin (3 x 10)	2
56	973-022-0	Roll Pin (2 x 22)	1
57	973-066-0	Roll Pin (2.5 x 6)	1
58	973-124-0	Roll Pin (3 x 24)	1
59	973-340-0	Roll Pin (6 x 10)	1
60	975-594-0	Round Plate	1
61	976-240-0	Spring (4.3 x 14 x 0.4)	1
62	976-216-0	Spring (2.8 x 15 x 0.4)	2
63	976-228-0	Spring (4.6 x 14 x 0.5)	1
64	977-103-0	Cone Spring (6 x 9.5 x 16)	1
64-1	975-162-0	Spacer (24 x 12.5 x 0.4)	1
65	979-003-0	Inner Snap Ring (10)	1
66	979-113-0	Outer Snap Ring (16)	1
67	981-003-0	Ball (5/32)	1

Index Number	Part Number	Description	Qty.
68	981-024-0	Polyurethane Ball (5)	1
69	981-208-0	Ball (5/16) Black	1
70	982-201-0	Ball Bearing (6201)	1
71	982-402-0	Ball Bearing (EE-3)	1
72	982-403-0	Ball Bearing (EE-4)	1
73	990-003-0	O-Ring (P5)	1
74	990-320-0	O-Ring (ARP568-003)	1
75	990-331-0	O-Ring (UW1530-21)	1
76	990-900-0	O-Ring (SNS-2)	1
77	990-906-0	O-Ring (SNS-8)	1
78	990-908-0	O-Ring (SNS-10)	1
79	990-910-0	O-Ring (SNS-12.5)	3
80	990-918-0	O-Ring (SNS-20)	1
81	990-919-0	O-Ring (SNS-22)	2
82	990-921-0	O-Ring (SNS-22.4)	1
83	990-951-0	O-Ring (P8) (NOK)	1
84	990-012-0	O-Ring (P12.5)	1
85	990-332-0	O-Ring (ARP568-107)	1
86	990-909-0	O-Ring (SNS-11.2)	1
87	990-907-0	O-Ring (SNS-9)	1
88	909-759-0	Solenoid Valve Assembly	1
89	909-725-0	LED Lamp	1
90	909-723-0	Joint Cable Assembly	1
91	909-757-0	Ribbon Wire Assembly	1

ACCESSORIES

93	192-723-5	Dead Handle Plate	1
94	556-720-2	Dead Handle	1
95	960-550-0	Hexagon Nut (M12 Special)	1
96	962-013-0	Spring Washer (2-12S)	1

FOOTNOTES

When ordering spare parts, please specify tool type, part number and description.

10000 SE PINE, PORTLAND, OR 97216
503-254-6600 FAX 503-255-2615



AIMCO also offers a complete line of standard & special adapters, bits, sockets and extensions.