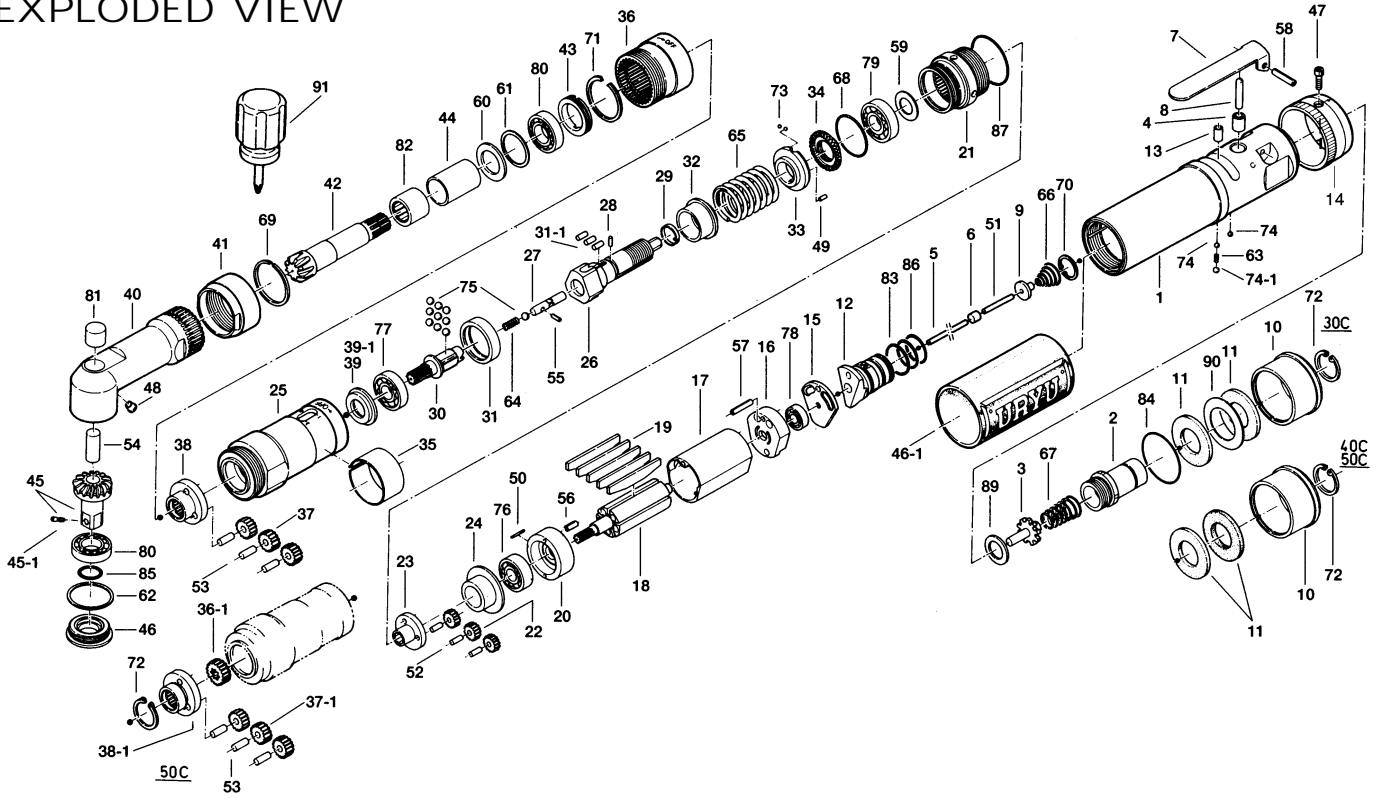


# UAN-611R-30C, 40C & 50C TORQUE CONTROL ANGLE NUTRUNNERS

## EXPLODED VIEW



## PARTS LIST — FOR REFERENCE ONLY

| Index Number | Part Number | Description           | Qty. |
|--------------|-------------|-----------------------|------|
| 1            | 268-025-7   | Casing                | 1    |
| 2            | 259-091-6   | Air Inlet Bushing     | 1    |
| 3            | 259-100-6   | Valve                 | 1    |
| 4            | 553-103-1   | Valve Rod Bushing     | 1    |
| 5            | 268-104-6   | Valve Rod             | 1    |
| 6            | 444-106-8   | Valve Rod Cap         | 1    |
| 7            | 196-107-7   | Valve Lever           | 1    |
| 8            | 259-114-0   | Valve Spindle         | 1    |
| 9            | 259-254-6   | Shut-Off Valve        | 1    |
| 10           | 259-780-6   | Exhaust Stack         | 1    |
| 11           | 259-835-6   | Filter                | 2    |
| 12           | 268-210-7   | Reverse Valve         | 1    |
| 13           | 268-211-6   | Reverse Valve Bushing | 1    |
| 14           | 268-212-6   | Reverse Lever         | 1    |
| 15           | 268-291-7   | Rear Plate Spacer     | 1    |
| 16           | 259-285-0   | Rear Plate            | 1    |
| 17           | 259-286-0   | Cylinder              | 1    |
| 18           | 259-287-0   | Rotor                 | 1    |
| 19           | 268-288-6   | Blade (PC)            | 5    |
| 20           | 496-289-1   | Front Plate           | 1    |
| 21           | 463-029-8   | Gear Casing           | 1    |
| 22           | 472-470-3   | Planet Gear           | 3    |
| 23           | 472-480-3   | Gear Cage             | 1    |
| 24           | 472-807-3   | Spacer                | 1    |
| 25           | 268-369-6   | Clutch Casing         | 1    |
| 26           | 268-654-6   | Cam Guide             | 1    |
| 27           | 268-318-6   | Pilot Pin             | 1    |
| 28           | 471-764-7   | Notch Pin             | 1    |
| 29           | 471-670-7   | Band                  | 1    |
| 31           | 259-375-0   | Cam Ring              | 1    |
| 31-1         | 268-651-6   | Cam Roller            | 3    |
| 32           | 268-164-7   | Spring Setter         | 1    |
| 33           | 895-064-1   | Stopper               | 1    |
| 34           | 472-257-8   | Regulator Screw       | 1    |
| 35           | 259-670-0   | Band                  | 1    |
| 36           | 259-466-0   | Internal Gear         | 1    |
| 40           | 268-441-6   | Angle Casing          | 1    |
| 41           | 259-081-0   | Locking Nut           | 1    |

| Index Number | Part Number | Description                    | Qty. |
|--------------|-------------|--------------------------------|------|
| 42           | 268-420-6   | Driving Gear                   | 1    |
| 43           | 259-426-0   | Driving Gear Spindle           | 1    |
| 44           | 259-567-2   | Bushing                        | 1    |
| 45           | 895-069-1   | Driven Gear Assembly (P)       | 1    |
| 45           | 268-430-6   | Driven Gear                    | 1    |
| 45-1         | 891-300-1   | Socket Retainer Pin Assembly   | 1    |
| 46           | 268-488-6   | Angle Casing Cover             | 1    |
| 46-1         | 268-840-6   | Handle Protector               | 1    |
| 47           | 945-001-0   | Allen Head Bolt (M3 X 10)      | 1    |
| 48           | 968-130-0   | Grease Cup (3/16)              | 1    |
| 49           | 970-092-0   | Pin (H) (2 x 55)               | 1    |
| 50           | 971-110-0   | Pin (2 X 10)                   | 1    |
| 51           | 972-020-0   | Roller Pin (2 x 19.8A)         | 1    |
| 52           | 972-089-0   | Roller Pin (3X8)               | 3    |
| 53           | 972-111-0   | Roller Pin (8 X 11)            | 3    |
| 54           | 972-320-0   | Roller Pin (8 X 20)            | 1    |
| 55           | 969-470-0   | Pin (E) (2 X 8)                | 1    |
| 56           | 973-108-0   | Roll Pin (3 X 8)               | 1    |
| 57           | 973-116-0   | Roll Pin (3 X 16)              | 1    |
| 58           | 973-124-0   | Roll Pin (3 X 24)              | 1    |
| 59           | 975-106-0   | Spacer (18.5 X 11 X 1)         | 1    |
| 60           | 975-166-0   | Spacer (24 X 16 X 1.5)         | 1    |
| 61           | 975-806-0   | Adjusting Spacer (24 X 20 X T) | 1    |
| 62           | 975-807-0   | Adjusting Spacer (28 X 25 X T) | 1    |
| 63           | 976-022-0   | Spring (3 X 5.5 X 0.4)         | 1    |
| 64           | 976-058-0   | Spring (4.5X1 X 0.4)           | 1    |
| 65           | 976-596-0   | Apring (25.2X32.5X3.0)         | 1    |
| 66           | 977-072-0   | Cone Spring (5.5 X 15 X 14)    | 1    |
| 67           | 977-275-0   | Cone Spring (11 X14 X 32)      | 1    |
| 68           | 978-278-0   | Snap Ring (28 X 1)             | 1    |
| 69           | 978-308-0   | Snap Ring (30 X 1.6)           | 1    |
| 70           | 979-009-0   | Inner Snap Ring (16)           | 1    |
| 71           | 979-206-0   | Inner Snap Ring (28)           | 1    |
| 72           | 979-358-0   | Inner Snap Ring (ISTW-17)      | 1    |
| 73           | 981-001-0   | Ball (3/32)                    | 2    |
| 74           | 981-002-0   | Ball (1/8)                     | 2    |
| 74-1         | 981-003-0   | Ball (5/32)                    | 1    |
| 75           | 981-004-0   | Ball (3/16)                    | 10   |

| Index Number | Part Number | Description                      | Qty. |
|--------------|-------------|----------------------------------|------|
| 76           | 982-015-0   | Ball Bearing (608)               | 1    |
| 78           | 982-033-0   | Ball Bearing (696)               | 1    |
| 79           | 982-100-0   | Ball Bearing (6000)              | 1    |
| 80           | 982-902-0   | Ball Bearing (6901)              | 2    |
| 81           | 988-480-0   | Needle Roller Bearing (BK0810)   | 1    |
| 82           | 988-393-0   | Needle Roller Bearing (NF-1416)  | 1    |
| 83           | 990-590-0   | O-Ring (17 X 1)                  | 2    |
| 84           | 990-603-0   | O-Ring (28.5 X 1.3)              | 1    |
| 85           | 990-910-0   | O-Ring (SNS-12.5)                | 1    |
| 86           | 990-914-0   | O-Ring (SNS-16)                  | 1    |
| 87           | 990-924-0   | O-Ring (SNS-30)                  | 1    |
| 89           | 996-433-0   | Urethane Packing (19 X 12 X 1)   | 1    |
| 30           | 268-346-6   | Cam                              | 1    |
| 37           | 499-470-7   | Second Planet Gear               | 3    |
| 38           | 259-485-0   | Second Gear Cage                 | 1    |
| 39           | 268-487-6   | Second Gear Cage Spacer          | 1    |
| 77           | 982-016-0   | Ball Bearing (609)               | 1    |
| 90           | 996-459-0   | Urethane Packing (32 X 22 X 0.5) | 1    |
| 30           | 268-346-7   | Cam                              | 1    |
| 37           | 444-471-1   | Second Planet Gear               | 3    |
| 38           | 268-485-7   | Second Gear Cage                 | 1    |
| 39-1         | 268-487-7   | Second Gear Cage Spacer          | 1    |
| 77           | 982-902-0   | Ball Bearing (6901)              | 1    |
| 30           | 268-346-6   | Cam                              | 1    |
| 36-1         | 499-445-0   | Middle Gear                      | 1    |
| 37-1         | 499-470-0   | Second Planet Gear               | 3    |
| 38-1         | 259-485-1   | Second Gear Cage                 | 1    |
| 39           | 268-487-6   | Second Gear Cage Spacer          | 1    |
| 72           | 979-358-0   | Inner Snap Ring (ISTW-17)        | 1    |

### ACCESSORIES

|    |           |                    |   |   |
|----|-----------|--------------------|---|---|
| 77 | 982-016-0 | Ball Bearing (609) | 1 | X |
| 91 | 939-402-0 | Manual Driver No.2 | 1 |   |

### FOOTNOTES

- = Parts for UAN-611R-30C
- = Parts for UAN-611R-40C
- X = Parts for UAN-611R-50C

AIMCO also offers a complete line of standard & special adapters, bits, sockets and extensions.



# AIMCO

When ordering spare parts, please specify tool type, part number and description.

10000 SE PINE, PORTLAND, OR 97216  
503-254-6600 FAX 503-255-2615