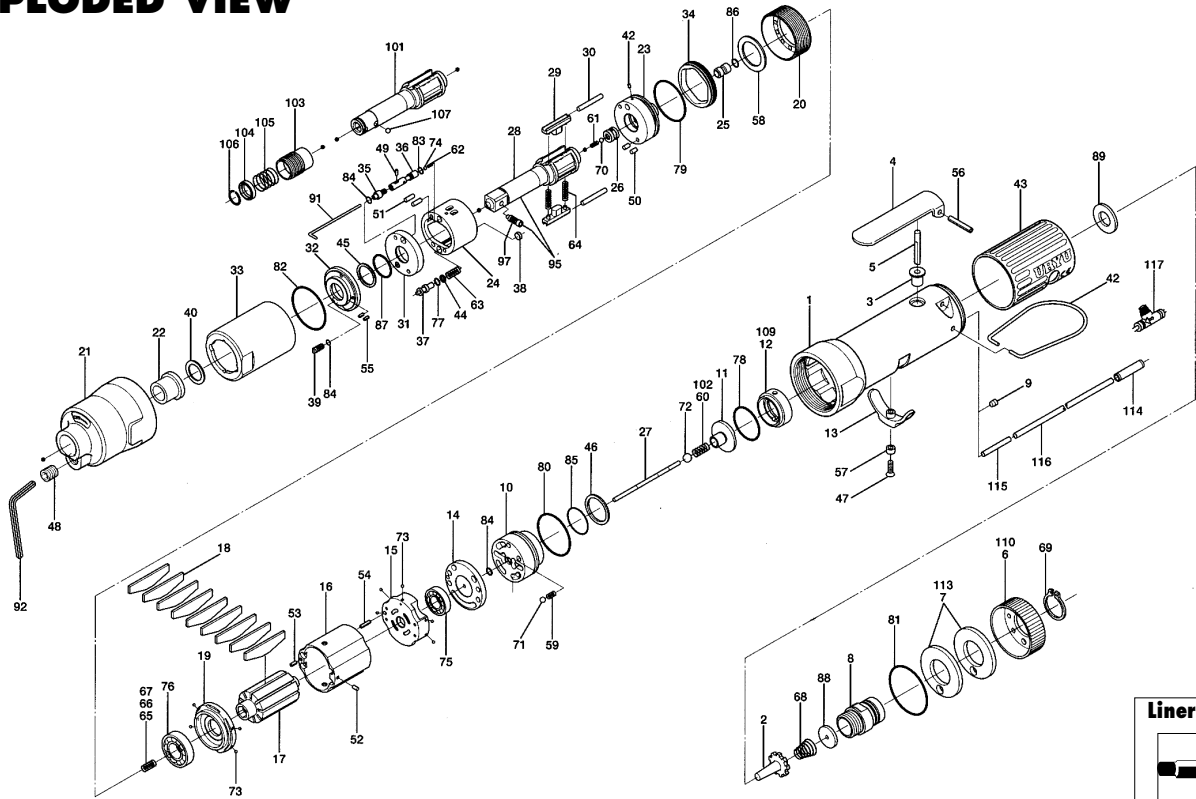


ULT50S(D) SERIES OIL-PULSE WRENCHES

EXPLODED VIEW



Liner Casing Assembly

Part # 891-462-1

PARTS LIST — FOR REFERENCE ONLY

Index Number	Part Number	Description	Qty.	Index Number	Part Number	Description	Qty.	Index Number	Part Number	Description	Qty.
1	128-025-8	Casing	1	40	145-327-6	Anvil Front Spacer	1	79	990-329-0	O-Ring (JW1530-19)	1
2	259-100-0	Valve	1	41	150-064-5	Plug	1	80	990-331-0	O-Ring (JW1530-21)	1
3	161-103-3	Valve Rod Bushing	1	42	191-790-1	Suspension Ring	1	81	990-603-0	O-Ring (28.5x1.3)	1
4	196-107-7	Valve Lever	1	43	128-842-8	Casing Cover (Black)	1	82	990-605-0	O-Ring (25x1.45)	1
5	128-104-8	Valve Rod	1	44	944-002-0	Support Ring (2.6x4.5x1)	1	83	990-621-0	O-Ring (3.8x1.8x1.0)	1
6	128-782-8	Exhaust Cover (Red)	1	45	944-212-0	Support Ring (12x16x1.5)	1	84	990-900-0	O-Ring (SNS-2)	3
7	128-835-8	Filter (K200)	2	46	944-216-0	Support Ring (14x20x1.85)	1	85	990-914-0	O-Ring (SNS-16)	1
8	128-091-8	Air Inlet Bushing	1	47	948-426-0	Allen Head Dog Point Screw (M3x12)	1	86	990-305-0	O-Ring (ARP568-003) KS	1
9	147-064-6	Filler	1	48	966-099-0	Allen Head Plug (NPT1/16) GDL	1	87	992-020-0	SU-Ring (Q12/NTN)	1
10	128-253-8	Shut-Off Valve Bushing	1	49	970-013-0	Pin (H) (1.5x4)	1	88	996-409-0	Urethane Packing (12x2.2x2) Yellow	1
11	145-254-6	Shut-Off Valve	1	50	970-130-0	Pin (H) (2.45x4.5)	2	89	996-423-0	Urethane Packing (16x10x2)	1
12	128-684-8	Cushion Spacer (Red)	1	51	970-131-0	Pin (H) (2.45x9.5)	2	95	891-554-1	Anvil Assembly (OP-P)	1
13	161-212-3	Reverse Lever	1	52	971-102-0	Pin (2x3.8)	1	97	891-300-1	Socket Pin Assembly	1
14	128-291-8	Rear Plate Spacer	1	53	973-008-0	Roll Pin (2x8)	1	PARTS FOR ULT50SD			
15	128-285-8	Rear Plate	1	54	973-018-0	Roll Pin (2x18)	1	101	145-350-2	Driver Anvil	1
16	128-286-8	Cylinder	1	55	973-040-0	Roll Pin (1.5x5)	2	102	976-647-0	Spring (4.3x9x0.45)	1
17	145-287-6	Rotor	1	56	973-122-0	Roll Pin (3x22)	1	103	011-351-1	Bit Sleeve (1/8)	1
18	145-288-0	Blade (PC)	9	57	975-004-0	Spacer (5.5x3.1 x2.7)	1	104	011-352-1	Bit Spacer	1
19	128-289-8	Front Plate	1	58	975-752-0	Adjusting Spacer (15x10xt)	1	105	976-327-0	Spring (13.5x11x0.9)	1
20	147-036-2	Hammer Casing Connector	1	59	976-006-0	Spring (3x5x0.4)	1	106	978-117-0	Snap Ring (11.7x1)	1
21	145-439-0	Front Casing	1	60	976-686-0	Spring (4.4x10x0.45)	1	107	981-002-0	Ball (1/8)	1
22	190-328-6	Anvil Bushing	1	61	976-653-0	Spring (2.4x5x0.26)	1	PARTS FOR ULT50SL & DSL			
23	145-901-0	Rear Liner Plate	1	62	976-682-0	Spring (2.7x7.2x0.35)	1	109	129-884-0	Cushion Spacer (Blue)	1
24	145-902-0	Liner	1	63	976-674-0	Spring (4.3x14x0.55)	1	110	129-782-0	Exhaust Cover (Blue)	1
25	145-546-6	Piston	1	64	976-791-0	Spring (3.3x21x0.4) WPC	2	PARTS FOR TM-TYPE			
26	145-929-6	Check Valve Cover	1	65	976-650-0	Spring (3.3x16x0.45) Standard	1	113	851-053-1	Filter (K200)	2
27	128-130-8	Operating Rod (2.1x59)	1	66	976-661-0	Spring (3.3x17x0.4) Weak(Black)	1	114	909-442-0	Quick Exhaust (AQ240F-04-00)	1
28	145-319-6	Anvil	1	67	976-662-0	Spring (3.3x17x0.35) Strong (Yellow)	1	115	935-240-0	Nylon Tube (NPT 1/4x3/8)	1
29	145-440-6	Driving Blade	2	68	977-227-0	Cone Spring (9x12x25x0.8)	1	116	935-350-0	Polyurethane Hose (F-1504)	1
30	145-974-0	Roller (2.5x21)	2	69	979-358-0	Snap Ring (ISTW-17)	1	ACCESSORIES			
31	145-973-6	Liner Casing Spacer	1	70	981-001-0	Ball (3/32)	1	91	939-091-0	Allen Wrench (1.5)	1
32	145-904-6	Front Liner Plate	1	71	981-002-0	Ball (1/8)	1	92	939-105-0	Allen Wrench (4)	1
33	145-905-0	Liner Casing	1	72	981-003-0	Ball (5/32)	1	117	909-449-0	Speed Controller (AS1001F-04)	1
34	145-906-6	Liner Casing Cover	1	73	981-045-0	Ball (1.5mm)	9	FOOTNOTES			
35	145-907-6	Relief Valve Spindle	1	74	981-150-0	Ball (3mm)	1	AIMCO also offers a complete line of standard & special adapters, bits, sockets and extensions.			
36	145-970-0	Relief Valve	1	75	982-014-0	Ball Bearing (607)	1				
37	145-972-6	Accumulator	1	76	982-902-0	Ball Bearing (6901)	1				
38	145-908-7	Accumulator Cover	1	77	990-320-0	O-Ring (ARP568-003)	1				
39	194-742-0	Oil Plug	1	78	990-327-0	O-Ring (JW1530-18)	1				

When ordering spare parts, please specify tool type, part number and description.



AIMCO

10000 SE PINE, PORTLAND, OR 97216
503-254-6600 FAX 503-255-2615