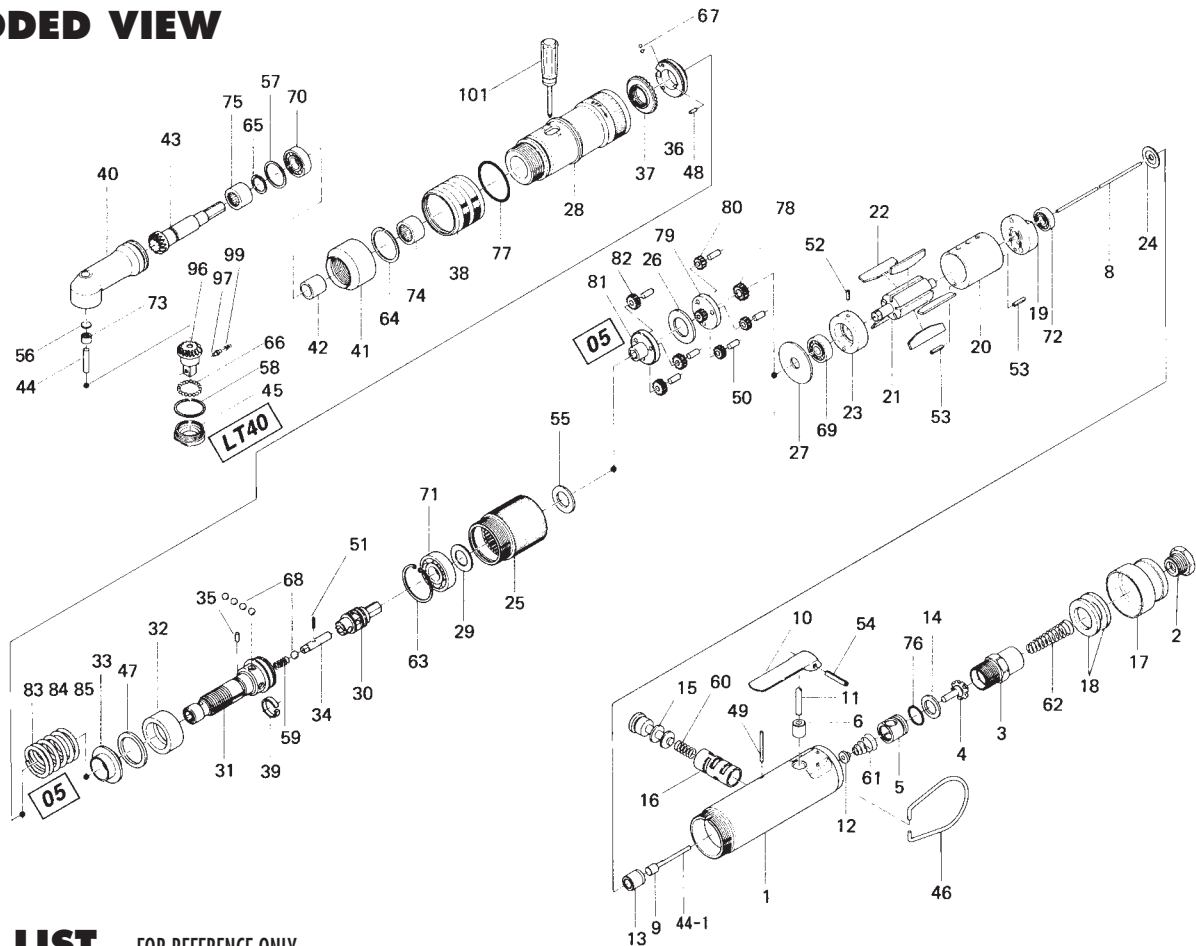


US-LT40-05C ANGLE SCREWDRIVER

EXPLODED VIEW



PARTS LIST — FOR REFERENCE ONLY

Index Number	Part Number	Description	Qty.
1	461-025-6	Casing	1
2	408-091-2	Air Inlet Bushing	1
3	461-097-6	Air Inlet Connector	1
4	259-100-0	Valve	1
5	461-102-4	Valve Bushing	1
6	553-103-1	Valve Rod Bushing	1
7	461-104-4	Valve Rear Rod	1
8	463-104-7	Valve Rod	1
9	444-106-8	Valve Rod Cap	1
10	700-107-1	Valve Lever	1
11	461-114-6	Valve Pin	1
12	259-254-0	Shut-off Valve	1
13	461-567-4	Bushing	1
14	996-424-0	Packing	1
15	472-210-7	Reverse Valve	1
16	472-211-7	Reverse Valve Bushing	1
17	472-782-7	Exhaust Deflector	1
18	472-835-7	Filter	1
19	472-285-7	Rear Plate	1
20	472-286-7	Cylinder	1
21	472-287-7	Rotor	1
22	472-288-0	Blade	5
23	472-289-7	Front Plate	1
24	461-291-6	Rear Plate Spacer	1
25	472-029-7	Gear Casing	1
26	496-483-1	Gear Casing Spacer	1
27	472-807-7	Spacer	1
28	461-369-4	Clutch Casing	1
29	461-344-6	Cam Retainer	1
30	472-346-5	Cam	1
31	472-319-7	Anvil	1
32	472-375-7	Cam Ring	1

Index Number	Part Number	Description	Qty.
33	472-379-8	Retainer	1
34	471-318-5	Pilot Pin	1
35	471-764-7	Notch Pin	1
36	472-562-8	Spring Holder	1
37	472-257-8	Regulating Screw	1
38	472-370-7	Clutch Casing Sleeve	1
39	471-470-7	Band	1
40	461-441-8	Angle Casing	1
41	461-488-7	Locking Nut	1
42	469-807-5	Spacer	1
43	461-420-7	Driving Gear	1
44	972-216-0	Driven Gear Spindle	1
45	461-488-7	Angle Head Casing Cover	1
46	010-790-1	Suspension Ring	1
47	944-019-0	Back-up Ring (P19)	1
48	970-092-0	Pin (H) (2 x 5.5)	1
49	970-105-0	Pin (H) (2 x 24)	1
50	972-089-0	Roller Pin (3 x 8)	6
51	969-470-0	Pin (2 x 8)	1
52	973-006-0	Roll Pin (2 x 6)	1
53	973-010-0	Roll Pin (2 x 10)	2
54	973-118-0	Roll Pin (3 x 18)	1
55	975-106-0	Spacer (18.5 x 11 x 1)	1
56	975-593-0	Round Plate (6.3 x 1)	1
57	975-768-0	Adjusting Spacer (19 x 16.2 x T)	1
58	975-787-0	Adjusting Spacer (26 x 24 x T)	1
59	976-058-0	Spring (4.5 x 11) (0.4)	1
60	976-147-0	Spring (7 x 12) (0.6)	1
61	977-071-0	Cone Spring (5.5 x 11.5 x 15)	1
62	977-155-0	Cone Spring (7 x 10 x 35)	1
63	979-019-0	Inner Snap Ring (26)	1
64	979-19-0-0	Outer Snap Ring (22)	1

Index Number	Part Number	Description	Qty.
65	979-351-0	Inner Snap Ring (ISTW-10)	1
66	982-870-0	Bearing (6801)	1
67	981-001-0	Ball (3/32)	2
68	981-004-0	Ball (3/16)	5
69	982-013-0	Ball Bearing (606)	1
70	982-035-0	Ball Bearing (698)	1
71	982-100-0	Ball Bearing (6000)	1
72	987-015-0	Miniature Ball Bearing (R1560)	1
73	988-380-0	Needle Roller Bearing (F68)	1
74	988-394-0	Needle Roller Bearing (FJ-1210)	1
75	988-008-0	Needle Roller Bearing (NK10/12)	1
76	990-911-0	O-Ring (SNS-12)	1
77	990-923-0	O-Ring (SNS-26)	1
78	472-160-7	Rotor Gear	1
79	472480-7	First Gear Cage	1
80	472470-7	First Planet Gear	3
81	472485-7	Second Gear Cage	1
82	472-471-7	Second Planet Gear	3
83	976-515-0	Spring (22.7 x 28) (2.6) (STANDARD)	1
84	976-516-0	Spring (22.1 x 28) (2.3) (WEAK)	1
85	976-517-0	Spring (21.5 x 31) (2.0) (WEAKER)	1
86	975-113-0	Spacer (19 x 15 x 1.5)	1
96	461-430-7	Driving Gear (P)	1
97	469-800-9	Socket Retainer Pin	1
98	469-567-9	Bushing	1
99	976-018-0	Spring (2.8 x 8.5) (0.3)	1

ACCESSORIES

100	916-510-0	(+) Double Bit (No.2 x 23) (6.35)	1
101	939-402-0	Manual Driver (No.2)	1

FOOTNOTES

AIMCO also offers a complete line of standard & special adapters, bits, sockets and extensions.



AIMCO

When ordering spare parts, please specify tool type, part number and description.

10000 SE PINE, PORTLAND, OR 97216
503-254-6600 FAX 503-255-2615

REVISED 11/00