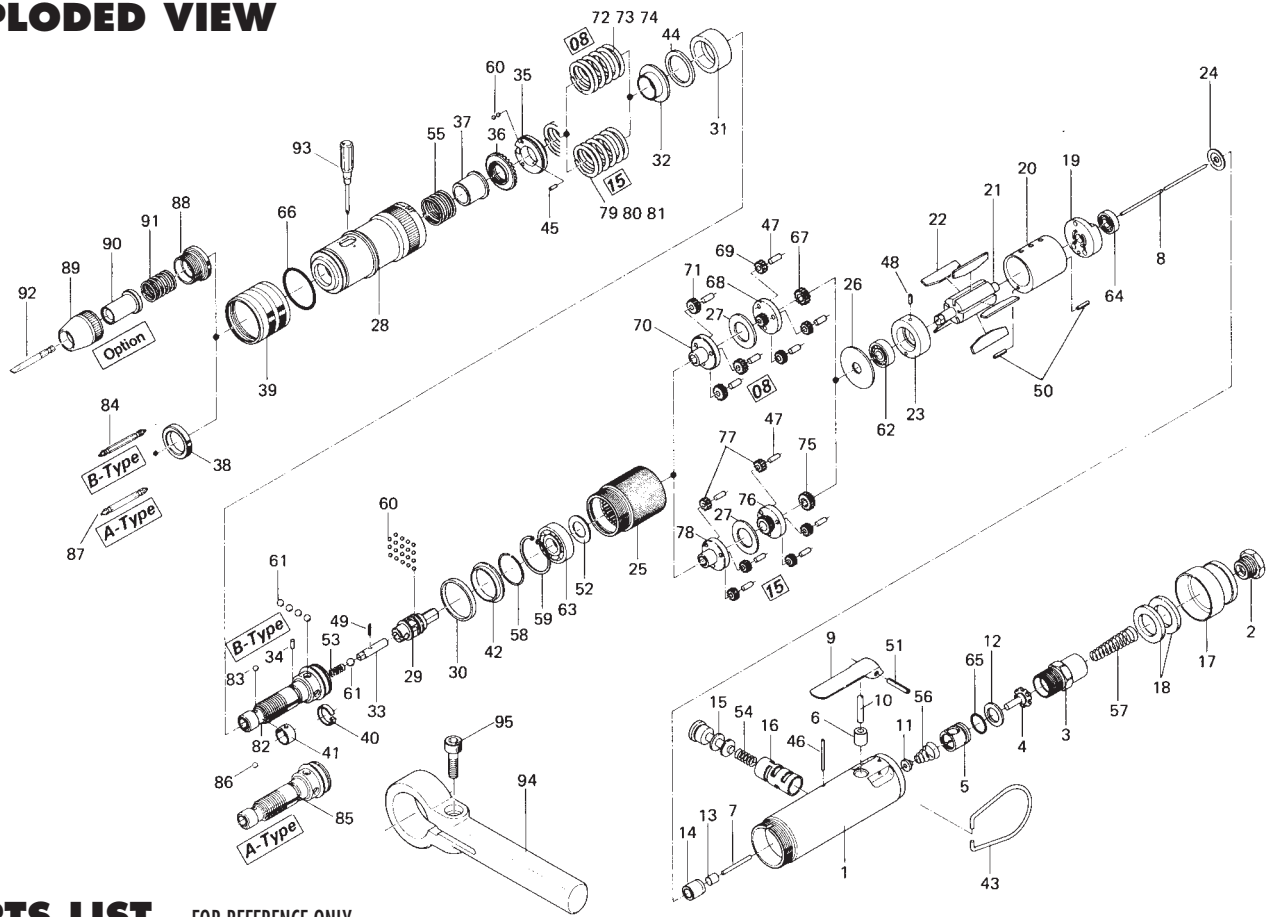


US-LT40A(B)L SERIES SCREWDRIVER

EXPLODED VIEW



PARTS LIST — FOR REFERENCE ONLY

Index Number	Part Number	Description	Qty.
1	461-025-6	Casing	1
2	480-091-8	Air Inlet Bushing	1
3	461-097-5	Air Inlet Connector	1
4	259-100-0	Valve	1
5	461-102-6	Valve Bushing	1
6	553-103-1	Valve Rod Bushing	1
7	970-108-0	Pin (H) (2 x 26.8 A)	1
8	463-104-7	Valve Rod	1
9	466-107-5	Valve Lever	1
10	461-114-6	Valve Pin	1
11	259-254-0	Shut-Off Valve	1
12	996-424-0	Packing	1
13	444-106-8	Valve Rod Cap	1
14	461-567-6	Bushing	1
15	893-057-1	Reverse Valve (Lock)	1
16	472-211-7	Reverse Valve Bushing	1
17	472-782-7	Exhaust Deflector	1
18	472-835-7	Filter	2
19	472-285-7	Rear Plate	1
20	472-286-7	Cylinder	1
21	472-287-7	Rotor	1
22	472-288-0	Blade (PC)	5
23	472-289-7	Front Plate	1
24	461-291-6	Rear Plate Spacer	1
25	472-029-7	Gear Casing	1
26	472-807-7	Spacer	1
27	496-483-1	Gear Cage Spacer	1
28	463-369-7	Clutch Casing	1
29	472-346-5	Cam	1
30	463-397-7	Back-up Spacer	1
31	472-375-7	Cam Ring	1
32	472-379-8	Retainer	1
33	471-318-5	Pilot Pin	1
34	471-764-7	Notch Pin	1

Index Number	Part Number	Description	Qty.
35	472-562-8	Spring Holder	1
36	472-257-8	Regulating Screw	1
37	472-351-7	Bit Sleeve	1
38	472-567-7	Bushing	1
39	472-370-7	Clutch Casing Sleeve	1
40	471-670-7	Band	1
41	471-356-7	Bit Band	1
42	463-334-7	Anvil Spacer	1
43	010-790-1	Suspension Ring	1
44	944-019-0	Back-up Ring (P-19)	1
45	970-092-0	Pin (2 x 5.5)	1
46	970-105-0	Pin (2 x 24)	1
47	972-089-0	Roller Pin (3 x 8)	6
48	973-006-0	Roll Pin (2 x 6)	1
49	969-470-0	Pin (E) (2 x 8)	1
50	973-010-0	Roll Pin (2 x 10)	2
51	973-118-0	Roll Pin (3 x 18)	1
52	975-106-0	Spacer (18.5 x 11 x 1)	1
53	976-058-0	Spring (4.5 x 11) (0.4)	1
54	976-147-0	Spring (7 x 12) (0.6)	1
55	976-450-0	Spring (18.5 x 10) (1.0)	1
56	977-071-0	Cone Spring (5.5 x 11.5 x 15)	1
57	977-155-0	Cone Spring (7 x 10 x 35)	1
58	978-218-0	Snap Ring (22 x 1)	1
59	979-326-0	Inner Snap Ring (IRTW-26)	1
60	981-001-0	Ball (3/32)	21
61	981-004-0	Ball (3/16)	5
62	982-063-0	Ball Bearing (606ZZ)	1
63	982-100-0	Ball Bearing (6000)	1
64	987-039-0	Miniature Ball Bearing (R1560ZZ)	1
65	990-911-0	O-Ring (SNS-12)	1
66	990-923-0	O-Ring (SNS-26)	1
67	472-460-7	Rotor Gear	1
68	472-480-7	First Gear Cage	1

Index Number	Part Number	Description	Qty.
69	472-470-7	First Planet Gear	3 ■
70	472-485-7	Second Gear Cage	1 ■
71	472-471-7	Second Planet Gear	3 ■
72	976-515-0	Spring (22.7 x 28) (2.6) Standard	1 ■
73	976-516-0	Spring (22.1 x 28) (2.3) Weak	1 ■
74	976-517-0	Spring (21.5 x 31) (2.0) Weaker	1 ■
75	472-460-5	Rotor Gear	1 X
76	472-480-5	First Gear Cage	1 X
77	472-470-5	First Planet Gear	1 X
78	472-485-5	Second Gear Cage	1 X
79	976-516-0	Spring (22.1 x 28) (2.3) Standard	1 X
80	976-515-0	Spring (22.7 x 28) (2.6) Strong	1 X
81	976-517-0	Spring (21.5 x 31) (2.0) Weak	1 X
82	472-319-7	Anvil	1 ●
83	981-002-0	Ball (1/8)	1 ●
85	472-319-6	Anvil	1 ▼
86	981-003-0	Ball (5/32)	1 ▼
88	472-082-7	Bit Casing Set Screw	1 ▼

ACCESSORIES

84	916-810-0	(+) Double Bit (No.2 x 75) (6.35)	1
87	916-710-0	(+) Double Bit (No.2 x 70) (5H)	1
89	471-057-7	Bit Casing	1
90	917-350-0	Finder (7.3 x 56 x 24-4E)	1
91	976-330-0	Spring (13.8 x 18) (0.8)	1
92	916-030-0	(-) Bit (5 x 56)	1
93	939-402-0	Manual Driver (No.2)	1
94	472-516-7	Dead Handle	1
95	945-222-0	Allen Head Bolt (M6 x 22)	1

FOOTNOTES

- = Parts for US-LT40L-08
- X = Parts for US-LT40L-15
- = Parts for US-LT40BL
- ▼ = Parts for US-LT40AL

AIMCO also offers a complete line of standard & special adapters, bits, sockets and extensions.



AIMCO

When ordering spare parts, please specify tool type, part number and description.
10000 SE PINE, PORTLAND, OR 97216
503-254-6600 FAX 503-255-2615