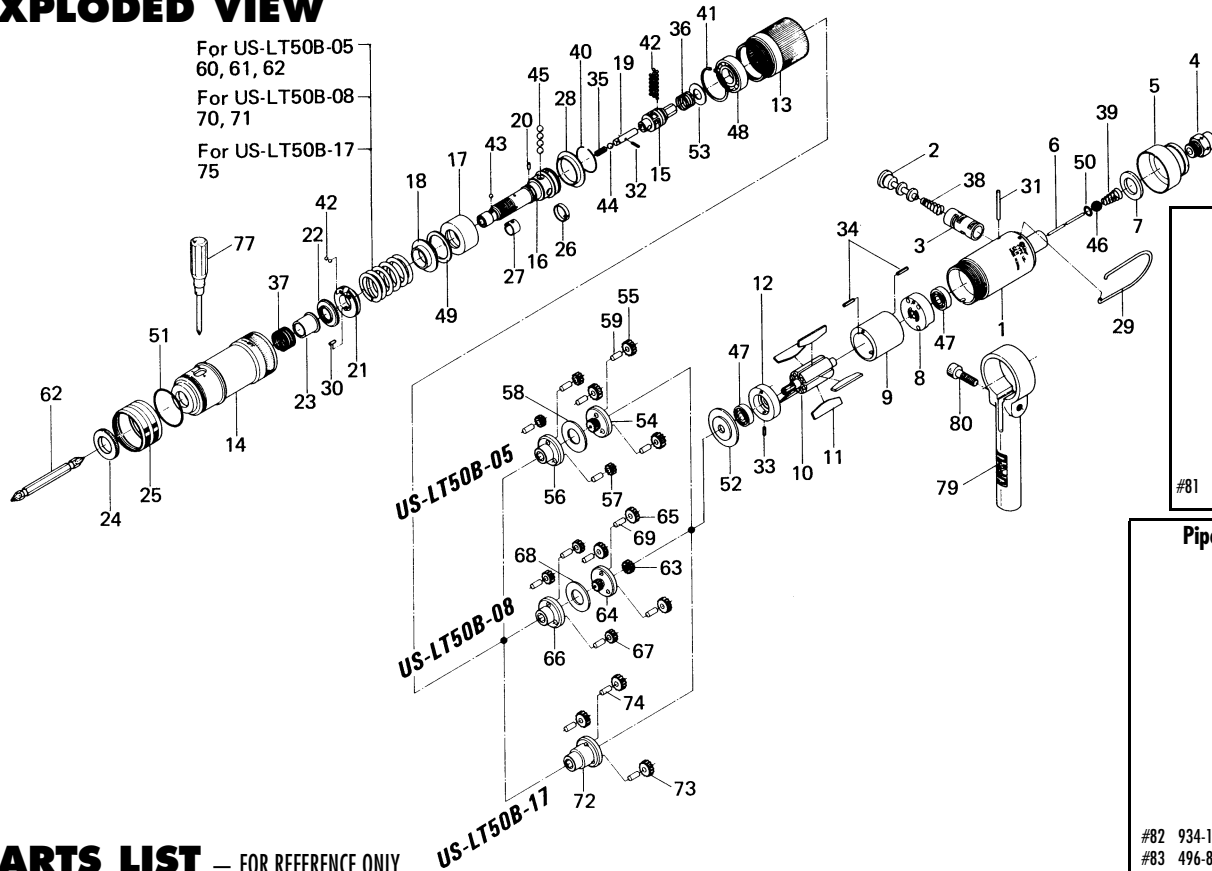


# US-LT50B SERIES SCREWDRIVER

## EXPLODED VIEW



## PARTS LIST — FOR REFERENCE ONLY

Index Number	Part Number	Description	Qty.
1	444-025-4	Casing	1
2	693-058-1	Reverse Valve	1
3	444-211-4	Reverse Valve Bushing	1
4	480-091-8	Air Inlet Bashing	1
5	444-782-4	Exhaust Deflector	1
6	444-104-4	Valve Rod	1
7	472-835-7	Filter	1
8	444-285-4	Rear Plate	1
9	444-286-4	Cylinder	1
10	444-287-4	Rotor	1
11	444-288-6	Blade (PC)	5
12	444-289-4	Front Plate	1
13	444-029-4	Gear Casing	1
14	444-369-4	Clutch Casing	1
15	444-346-3	Cam	1
16	444-319-4	Anvil	1
17	444-375-3	Cam Ring	1
16	444-379-3	Retainer	1
19	471-318-5	Pilot Pin	1
20	444-764-4	Notch Pin	1
21	444-562-4	Spring Holder	1
22	472-257-8	Regulating Screw	1
23	472-351-7	Bit Sleeve	1
24	444-567-4	Bashing	1
25	444-370-4	Clutch Casing Sleeve	1
26	444-670-4	Band	1
27	471-356-7	Bit Band	1
28	444-334-8	Anvil Spacer	1
29	191-790-1	Suspension Ring	1
30	970-092-0	Pin (H) (2 x 5.5)	1
31	970-226-0	Pin (H) (3 x 26)	1
32	969-470-0	Pin (2 x 8)	1

Index Number	Part Number	Description	Qty.
33	973-007-0	Roll Pin (2 x 7)	1
34	973-072-0	Roll Pin (2.5 x 12)	2
35	976-058-0	Spring (4.5 x 11)	1
36	977-103-0	Cone Spring (6 x 9.5 x 16)	1
37	976-450-0	Spring (18.5 x 10)	1
36	976-332-0	Spring (6 x 9.5 x 16)	1
39	977-157-0	Cone Spring (7 x 11 x 20)	1
40	978-229-0	Snap Ring (23 x 1)	1
41	979-025-0	Inner Snap Ring (32)	1
42	981-001-0	Ball (3/32)	24
43	981-002-0	Ball (1/8)	1
44	981-004-0	Ball (3/16)	1
45	981-005-0	Ball (7/32)	4
46	981-208-0	Ball (5/16)	1
47	982-066-0	Ball Bearing (607ZZ)	2
48	982-102-0	Ball Bearing (6002)	1
49	982-023-0	Supporting Ring (P-22A)	1
50	990-005-0	O-Ring (P-7)	1
51	990-935-0	O-Ring (SNS-31.5)	1
52	444-807-4	Spacer	1
53	975-109-0	Spacer (20 x 9.5 x 1.5)	1
54	444-480-4	First Gear Cage	1 ■
55	444-470-4	First Planet Gear	3 ■
56	444-485-4	Second Gear Cage	1 ■
57	444-471-4	Second Planet Gear	3 ■
58	444-483-4	Gear Cage Spacer	1 ■
59	972-110-0	Needle Roller (4 x 10)	6 ■
60	976-620-0	Spring (Standard: 27.5 x 36)	1 ■
61	976-614-0	Spring (Weaker: 27 x 36)	1 ■
62	976-588-0	Spring (Weakest: 25 x 38)	1 ■
63	444-460-3	Rotor Gear	1 x
64	444-480-3	First Gear Cage	1 x

Index Number	Part Number	Description	Qty.
65	444-471-4	First Planer Gear	3 x
66	444-485-3	Second Gear Case	1 x
67	444-471-3	Second Planet Gear	3 x
68	444-483-4	Gear Cage Spacer	1 x
69	972-110-0	Needle Roller (4 x 10)	6 x
70	976-614-0	Spring (Standard: 27 x 36)	1 x
71	976-588-0	Spring (Weaker: 25 x 36)	1 x
72	444-480-2	Gear Cage	1 ●
73	444-470-4	First Planet Gear	3 ●
74	972-110-0	Needle Roller (4 x 10)	3 ●
75	976-566-0	Spring (Standard: 25 x 36)	1 ●

### ACCESSORIES

76	916-610-0	1(+)	Dooble Bit (No.2 x 75)	1
77	939-402-0		Torque Adjusting Driver (No.2)	1

### optional ACCESSORIES

79	444-516-4		Reaction Bar	1
80	945-222-0		Allen Head Bolt (M6 x 22)	1
81	496-088-1		Silencer Assembly	1 □
82	934-150-0		Leader Hose Assembly	1 ○
83	496-885-1		Exhaust House Assembly	1 ○

### FOOTNOTES

- = Parts for US-LT50B-05
- x = Parts for US-LT50B-08
- = Parts for US-LT50B-17
- = Direct Type Silencer
- = Piped-away Type Silencer

AIMCO also offers a complete line of standard & special adapters, bits, sockets and extensions.



# AIMCO

When ordering spare parts, please specify tool type, part number and description.

10000 SE PINE, PORTLAND, OR 97216  
503-254-6600 FAX 503-255-2615