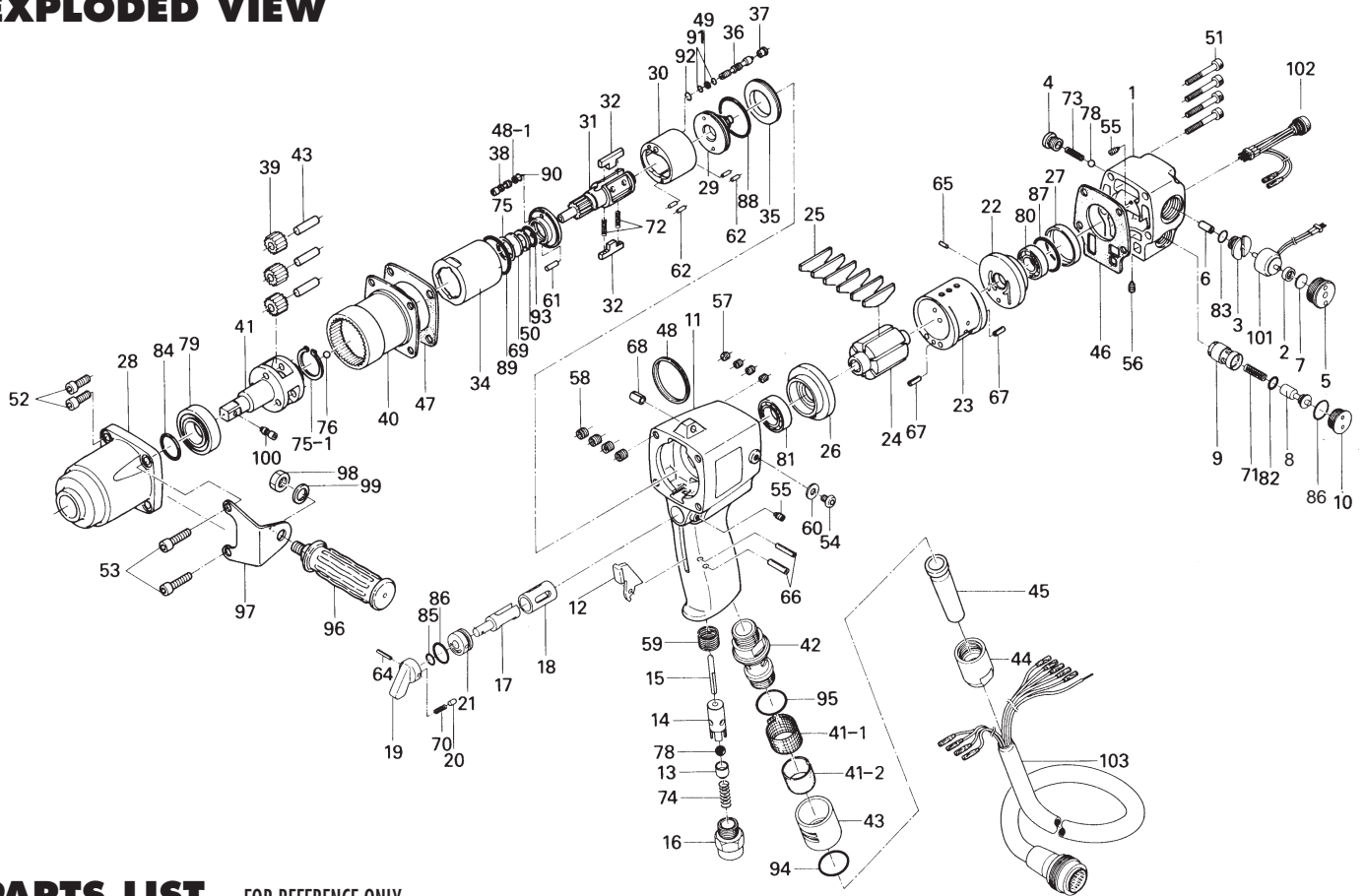


UX130EC OIL-PULSE TOOLS

EXPLODED VIEW



PARTS LIST — FOR REFERENCE ONLY

Index Number	Part Number	Description	Qty.	Index Number	Part Number	Description	Qty.	Index Number	Part Number	Description	Qty.
1	182-012-9	Head Cover	1	38	178-742-0	Oil Plug	1	72	976-453-0	Spring (4.5 x 34.5)	2
2	182-120-9	Valve Packing Spacer	1	39	182-470-9	Planet Gear	3	73	977-220-0	Cone Spring (9 x 10 x 25)	1
3	182-147-9	Stop Valve Bushing	1	40	182-465-9	Internal Gear with strain gauges	1	74	977-175-0	Cone Spring (7.5 x 10.3 x 22)	1
4	182-148-8	Stop Valve Cover	1	41	182-454-9	Socket Spindle	1	75	979-326-0	Inner Snap Ring (26)	1
5	182-149-9	Stop Valve Plug	1	41-1	193-042-5	Wire Net	1	75-1	979-368-0	Inner Snap Ring (28)	1
6	182-106-9	Solenoid Cap	1	41-2	182-099-9	Filter	1	76	981-006-0	Ball (1/4)	1
7	193-872-6	Valve Packing	1	42	193-780-6	Silencer	1	77	981-208-0	Ball (5/16)	1
8	175-254-9	Shut-Off Valve	1	43	193-782-6	Silencer Cover	1	78	981-026-0	Polyurethane Ball (5/16)	1
9	182-253-7	Shut-Off Valve Bushing	1	44	182-018-8	Cap	1	79	982-205-0	Ball Bearing (6205)	1
10	195-927-2	Shut-Off Valve Cover	1	45	182-562-8	Stopper	1	80	982-404-0	Ball Bearing (EE-5)	1
11	182-025-9	Casing	1	46	182-853-9	Head Cover Packing	1	81	982-905-0	Ball Bearing (6904)	1
12	187-107-1	Throttle Trigger	1	47	182-867-9	Front Casing Packing	1	82	990-005-0	O-Ring (P7)	1
13	188-100-1	Valve	1	48	004-790-2	Suspension Ring	1	83	990-010-0	O-Ring (P11)	1
14	063-102-3	Valve Bushing	1	48-1	944-002-0	Back-up Ring (2.6 x 4.5 x 1)	1	84	990-013-0	O-Ring (P25)	1
15	193-104-6	Valve Rod	1	49	944-003-0	Back-up Ring (3.0 x 5.0 x 1)	2	85	990-205-0	O-Ring (JW1516-5)	1
16	185-091-7	Air Inlet Bushing	1	50	944-221-0	Back-up Ring (20.9 x 24.72 x 1.25)	1	86	990-914-0	O-Ring (SNS-16)	2
17	199-210-1	Reverse Valve	1	51	945-245-0	Allen Head Bolt (M6 x 45)	4	87	990-929-0	O-Ring (SNS-36)	1
18	199-211-1	Reverse Valve Bushing	1	52	945-325-0	Allen Head Bolt (M8 x 25)	1	88	990-930-0	O-Ring (SNS-40)	1
19	023-212-4	Reverse Lever	1	53	945-328-0	Allen Head Bolt (M8 x 28)	2	89	990-932-0	O-Ring (SNS-42)	1
20	054-220-1	Reverse Lever Notch	1	54	945-950-0	Hexagon Round Head Bolt (M5 x 8)	2	90	990-320-0	O-Ring (ARP568-003)	1
21	187-222-1	Reverse Valve Setter	1	55	952-108-0	Allen Head Dog Point Screw (M4 x 8)	2	91	990-971-0	O-Ring (SNS-3) (NOK)	2
22	194-285-6	Rear Plate	1	56	954-105-0	Allen Head Cone Point Screw (M4 x 5)	1	92	990-974-0	O-Ring (SNS-6) (NOK)	1
23	063-286-7	Cylinder	1	57	965-021-0	Heli-Sert (M6 x 1.5D)	4	93	995-521-0	Teflon Seal (P21GC)	1
24	194-287-6	Rotor	1	58	965-041-0	Heli-Sert (M8 x 1.5D)	4	94	990-919-0	O-Ring (SNS-22)	1
25	182-288-7	Blade (Teflon coated)	6	59	965-073-0	Heli-Sert (UNF5/8) (N6)	1	95	990-921-0	O-Ring (SNS-22.4)	1
26	194-289-6	Front Plate	1	60	961-012-0	Flat Washer (5)	2	96	566-720-2	Dead Handle (A)	1
27	182-291-7	Rear Plate Spacer	1	61	969-450-0	Pin (G) (3 x 8)	1	97	182-723-9	Dead Handle Plate	1
28	182-439-9	Front Casing	1	62	970-206-0	Pin (H) (3 x 8)	4	98	960-550-0	Hexagon Nut (M12 Special)	1
29	194-901-6	Rear Liner Plate	1	63	972-270-0	Roller Pin (7 x 29)	3	99	962-013-0	Spring Washer (2-12S)	1
30	194-902-4	Liner	1	64	973-016-0	Roll Pin (2 x 16)	1	100	891-304-1	Socket Retainer Pin Assembly	1
31	182-319-9	Anvil	1	65	973-066-0	Roll Pin (2.5 x 6)	1	101	909-780-0	Solenoid Valve Assembly	1
32	194-440-4	Driving Blade	2	66	973-116-0	Roll Pin (3 x 16)	1	102	909-754-0	LED Assembly	1
33	182-904-9	Front Liner Plate	1	67	973-212-0	Roll Pin (4 x 12)	2	103	909-758-0	Joint Cable Assembly	1
34	182-905-9	Liner Casing	1	68	973-340-0	Roll Pin (6 x 10)	1				
35	194-906-4	Liner Casing Cover	1	69	975-192-0	Spacer (26 x 21 x 1.5)	1				
36	182-907-9	Relief Valve Spindle	1	70	976-025-0	Spring (3 x 8.5)	1				
37	194-969-4	Relief Valve Plug	1	71	976-143-0	Spring (7 x 18.5)	1				

ACCESSORIES

FOOTNOTES

AIMCO also offers a complete line of standard & special adapters, bits, sockets and extensions.



When ordering spare parts, please specify tool type, part number and description.

10000 SE PINE, PORTLAND, OR 97216
503-254-6600 FAX 503-255-2615