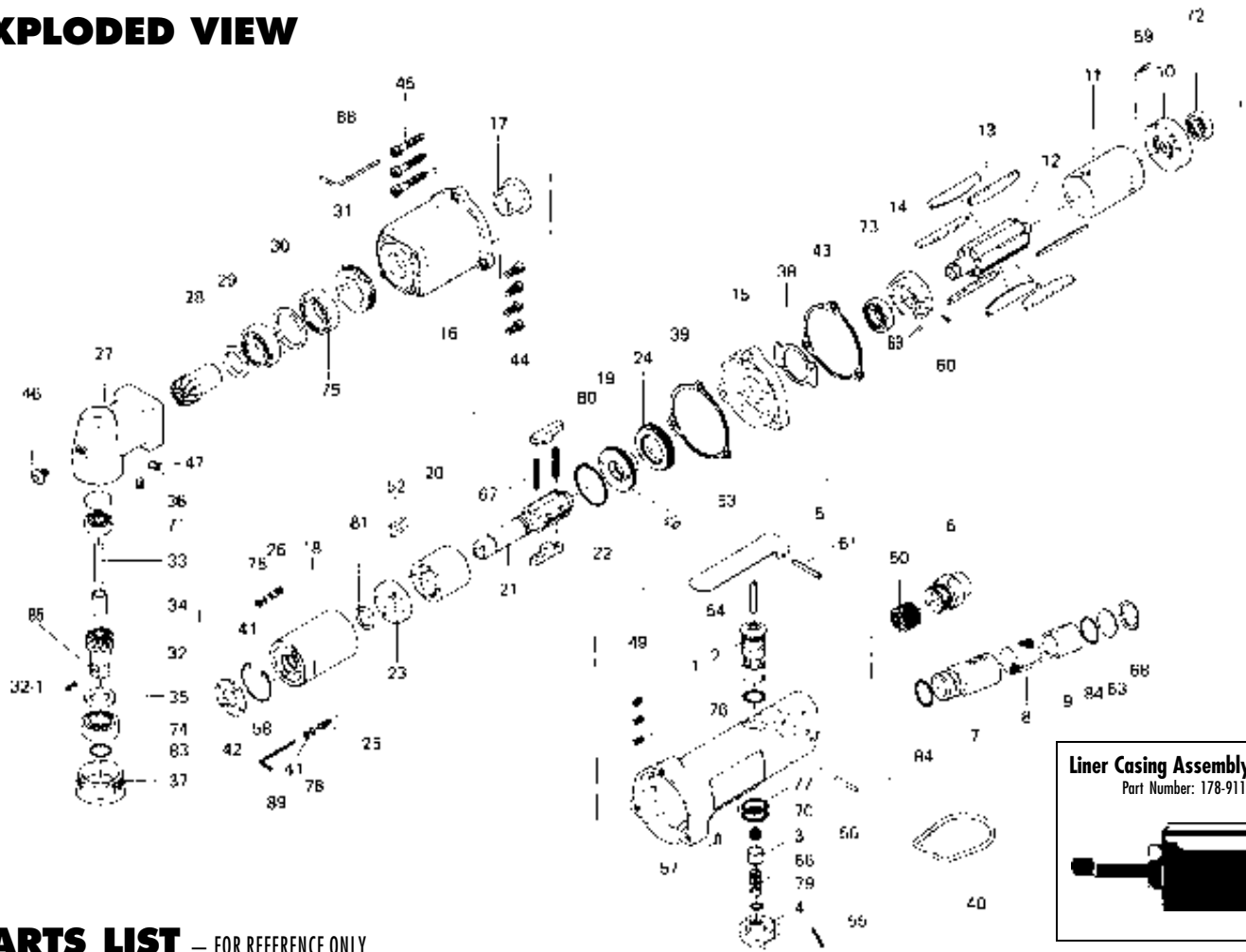


UX-612C OIL-PULSE TOOLS

EXPLODED VIEW



PARTS LIST — FOR REFERENCE ONLY

| Index Number | Part Number | Description | Qty. | Index Number | Part Number | Description | Qty. | Index Number | Part Number | Description | Qty. |
|--------------|-------------|----------------------|------|--------------|-------------|--------------------------------------|------|--------------|-------------|--------------------------------|------|
| 1 | 179-025-3 | Handle | 1 | 31 | 179-422-3 | Driving Gear Bushing Screw | 1 | 63 | 975-598-0 | Round Plate (18 x 1) | 1 |
| 2 | 180-210-2 | Reverse Valve | 1 | 32 | 008-430-1 | Driven Gear (OP-P) | 1 | 64 | 975-806-0 | Adjusting Spacer (24 x 20 x T) | 1 |
| 3 | 180-100-2 | Valve | 1 | 32-1 | 891-300-1 | Socket Retainer Pin Assembly | 1 | 65 | 975-807-0 | Adjusting Spacer (28 x 25 x T) | 1 |
| 4 | 180-212-2 | Reverse Lever | 1 | 33 | 008-431-1 | Driven Gear Spindle | 1 | 56 | 976-147-0 | Spring (7 x 12) | 1 |
| 5 | 500-107-1 | Valve Lever | 1 | 34 | 008-432-1 | Driven Gear Spindle Collar | 1 | 67 | 976-791-0 | Spring (3.3 x 21) WPC | 2 |
| 6 | 180-091-6 | Air Inlet Bushing | 1 | 35 | 008-433-1 | Driven Gear Spacer | 1 | 68 | 979-318-0 | Inner Snap Ring (IRTW-18) | 1 |
| 7 | 194-780-4 | Exhaust Stack | 1 | 36 | 179-391-5 | Spindle Upper Plate | 1 | 69 | 981-045-0 | Ball (1.5mm) | 1 |
| 8 | 194-042-4 | Silencer | 1 | 37 | 179-488-3 | Angle Casing Cover | 1 | 70 | 981-208-0 | Ball (5/16) | 1 |
| 9 | 499-780-7 | Filter | 1 | 38 | 179-856-3 | Separator Packing | 1 | 71 | 982-013-0 | Ball Bearing (606) | 1 |
| 10 | 180-285-2 | Rear Plate | 1 | 39 | 196-867-1 | Front Casing Packing | 2 | 72 | 982-401-0 | Ball Bearing (EE-2) | 1 |
| 11 | 180-286-2 | Cylinder | 1 | 40 | 010-790-1 | Suspension Ring | 1 | 73 | 982-402-0 | Ball Bearing (EE-3) | 1 |
| 12 | 196-287-4 | Rotor | 1 | 41 | 944-002-0 | Supporter Ring (2.6 x 4.5 x 1) | 1 | 74 | 982-902-0 | Ball Bearing (6901) | 1 |
| 13 | 150-288-9 | Blade (PC) | 7 | 42 | 178-327-9 | Anvil Front Spacer | 1 | 75 | 982-903-0 | Ball Bearing (6902) | 2 |
| 14 | 177-289-9 | Front Plate | 1 | 43 | 179-854-3 | Handle Packing | 1 | 76 | 990-008-0 | O-Ring (P10) | 1 |
| 15 | 179-027-3 | Separator | 1 | 44 | 945-010-0 | Allen Head Bolt (M4 x 10) | 4 | 77 | 990-014-0 | O-Ring (P14) | 2 |
| 16 | 179-439-3 | Front Casing | 1 | 45 | 945-020-0 | Allen Head Bolt (M4 x 20) | 3 | 78 | 990-320-0 | O-Ring (ARPS68-003) | 1 |
| 17 | 185-328-2 | Anvil Bushing | 1 | 46 | 945-949-0 | Allen Head Round Bolt (M5 x 6) | 1 | 79 | 990-322-0 | O-Ring (ARPS68-107) | 1 |
| 18 | 178-905-9 | Liner Casing | 1 | 47 | 954-105-0 | Allen Head Cone Point Screw (M4 x 5) | 2 | 80 | 990-329-0 | O-Ring (JW1530-19) | 1 |
| 19 | 196-901-4 | Rear Liner Plate | 1 | 49 | 965-006-0 | Heli-Sert (M4 x 1.5D) | 3 | 81 | 995-512-0 | Teflon Seal (P12) | 1 |
| 20 | 190-902-6 | Liner | 1 | 50 | 965-073-0 | Heli-Sert (UNF5/8N6) | 1 | 83 | 990-910-0 | O-Ring (SNS-12.5) | 1 |
| 21 | 178-319-8 | Anvil (OP-0) | 1 | 52 | 970-135-0 | Pin (H) (2.45 x 11) | 2 | 84 | 990-914-0 | O-Ring (SNS-16) | 2 |
| 22 | 190-440-6 | Driving Blade | 2 | 53 | 970-130-0 | Pin (H) (2.45 x 4.5) | 2 | 85 | 008-430-1 | Driven Gear (OP-0) | 1 |
| 23 | 178-904-8 | Front Liner Plate | 1 | 54 | 970-326-0 | Pin (H) (4 x 25) | 1 | | | | |
| 24 | 190-906-6 | Liner Casing Setter | 1 | 55 | 973-022-0 | Roll Pin (2 x 22) | 1 | | | | |
| 25 | 174-907-8 | Relief Valve Spindle | 1 | 56 | 971-163-0 | Pin (2.5 x 23) | 1 | | | | |
| 26 | 178-742-0 | Oil Plug | 1 | 57 | 973-005-0 | Roll Pin (2 x 5) | 1 | | | | |
| 27 | 179-441-3 | Angle Casing | 1 | 58 | 978-282-0 | Snap Ring (28 x 1.0) | 1 | | | | |
| 28 | 179-420-3 | Driving Gear | 1 | 59 | 973-008-0 | Roll Pin (2 x 8) | 1 | | | | |
| 29 | 179-425-3 | Driving Gear Spacer | 1 | 60 | 973-018-0 | Roll Pin (2 x 18) | 1 | | | | |
| 30 | 179-423-3 | Driving Gear Bushing | 1 | 61 | 973-124-0 | Roll Pin (3 x 24) | 1 | | | | |

Liner Casing Assembly (OP-0)
Part Number: 178-911-8



ACCESSORIES

| | | | |
|----|-----------|--------------------------------|---|
| 88 | 939-010-0 | Allen Wrench (3mm) | 1 |
| 89 | 939-090-0 | Allen Wrench (1.5mm) (55 x 55) | 1 |

AIMCO also offers a complete line of standard & special adapters, bits, sockets and extensions.

FOOTNOTES



When ordering spare parts, please specify tool type, part number and description.
10000 SE PINE, PORTLAND, OR 97216
503-254-6600 FAX 503-255-2615