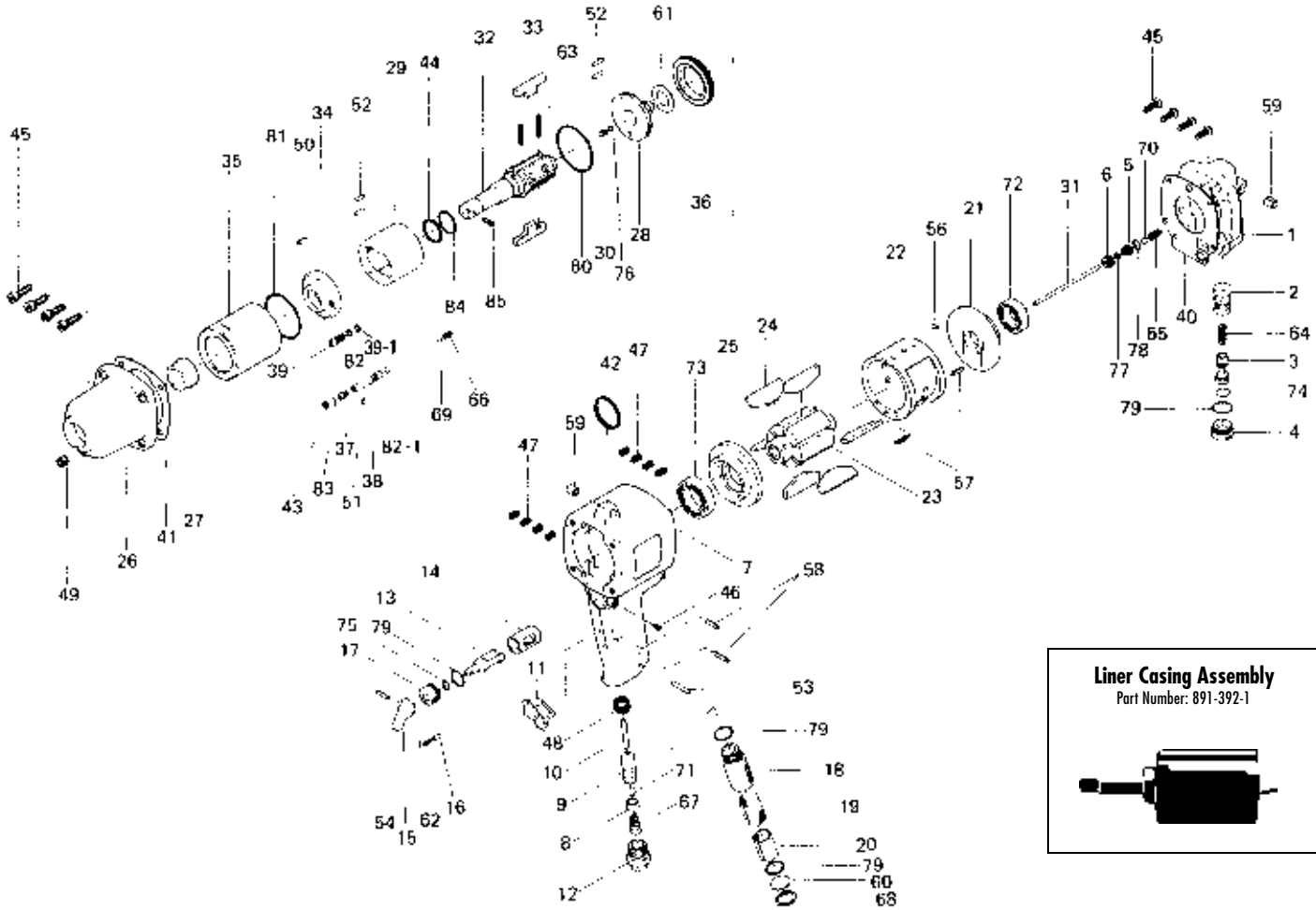


UX-T900 OIL-PULSE TOOLS

EXPLODED VIEW



PARTS LIST — FOR REFERENCE ONLY

Index Number	Part Number	Description	Qty.	Index Number	Part Number	Description	Qty.	Index Number	Part Number	Description	Qty.
1	168-012-4	Head Cover	1	32	891-311-1	Anvil (OP-P)	1	63	976-794-0	Spring (3.8 x 33) (0.5)	2
2	175-253-7	Shut-Off Valve Bushing	1	33	194-440-3	Driving Blade	2	64	976-274-0	Spring (5.2 x 15)	1
3	175-254-7	Shut-Off Valve	1	34	168-904-4	Front Liner Plate	1	65	976-275-0	Spring (6.7 x 12)	1
4	175-927-9	Shut-Off Valve Cover	1	35	194-905-3	Liner Casing	1	66	977-013-0	Cone Spring (3.2 x 3.8 x 7) (0.55)	1
5	175-968-9	Pilot Valve Retainer	1	36	194-906-3	Liner Casing Setter	1	67	977-175-0	Cone Spring (7.5 x 10.3 x 22)	1
6	175-019-9	Valve Cover	1	37	175-907-9	Relief Valve Spindle	1	68	979-011-0	Inner Snap Ring (18)	1
7	168-025-4	Handle	1	38	168-970-4	Relief Valve	1	69	981-002-0	Ball (1/8)	1
8	188-100-1	Valve	1	39	194-742-3	Oil Plug	1	70	981-006-0	Ball (1/4)	1
9	063-102-3	Valve Bushing	1	39-1	944-003-0	Supporting Ring (3.0 x 5.0 x 1)	1	71	981-208-0	Ball (5/16) (BLACK)	1
10	193-104-6	Valve Rod	1	40	168-853-4	Head Cover Packing	1	72	982-403-0	Ball Bearing (EE-4)	1
11	187-107-1	Throttle Trigger	1	41	194-867-3	Front Packing	1	73	982-950-0	Ball Bearing (16002)	1
12	185-091-7	Air Inlet Bushing	1	42	004-790-2	Suspension Ring	1	74	990-004-0	O-Ring (P6)	1
13	187-210-1	Reverse Valve	1	43	944-205-0	Supporting Ring (5.1 x 7 x 1)	1	75	990-205-0	O-Ring (JW1516-5)	1
14	185-211-1	Reverse Valve Bushing	1	44	944-215-0	Supporting Ring (16 x 19.9 x 1.5)	1	76	990-320-0	O-Ring (APR568-003)	1
15	023-212-4	Reverse Lever	1	45	945-117-0	Allen Head Bolt (M5 x 16)	8	77	990-901-0	O-Ring (SNS-3)	1
16	054-220-1	Reverse Lever Notch	1	46	952-108-0	Allen Head Dog Point Screw (M4 x 8)	1	78	990-907-0	O-Ring (SNS-9)	1
17	187-222-1	Reverse Valve Setter	1	47	965-011-0	Heli-Sert (M5 x 1.5D)	8	79	990-914-0	O-Ring (SNS-16)	4
18	194-780-4	Exhaust Stack	1	48	965-073-0	Heli-Sert (UNF5/8) (N6)	1	80	990-607-0	O-Ring (34 x 2.3)	1
19	194-042-4	Silencer	1	49	966-100-0	Allen Head Plug (1/8)	1	81	990-338-0	O-Ring (JW1530-28)	1
20	174-780-3	Filter	1	50	969-450-0	Pin (G) (3 x 8)	1	82	990-970-0	O-Ring (SNS-2) (NOK)	1
21	194-285-3	Rear Plate	1	51	970-093-0	Pin (H) (2 x 6)	1	83	990-972-0	O-Ring (SNS-4) (NOK)	1
22	194-286-3	Cylinder	1	52	970-206-0	Pin (H) (3 x 8)	4	84	995-516-0	Teflon Seal (P16GC)	1
23	168-287-4	Rotor	1	53	971-163-0	Pin (2.5 x 23)	1	85	891-304-1	Socket Pin Assembly (1/2)	1
24	168-288-6	Rotor Blade (PC)	6	54	973-016-0	Roll Pin (2 x 16)	1	82-1	990-970-0	O-Ring (SNS-2) (NOK)	1
25	194-289-3	Front Plate	1	56	973-066-0	Roll Pin (2.5 x 6)	1				
26	194-439-3	Front Casing	1	57	973-108-0	Roll Pin (3 x 8)	2				
27	188-328-2	Anvil Bushing	1	58	973-114-0	Roll Pin (3 x 14)	2				
28	168-901-4	Rear Liner Plate	1	59	973-340-0	Roll Pin (6 x 10)	2				
29	168-902-4	Liner	1	60	975-598-0	Round Plate (18 x 1)	1				
30	175-546-9	Piston	1	61	975-780-0	Adjusting Spacer (21 x 13 x T)	1				
31	168-130-4	Piston Rod	1	62	976-025-0	Spring (3 x 8.5)	1				



ACCESSORIES

88	939-104-0	Allen Wrench (5mm)	1
89	939-109-0	Allen Wrench (2mm) (64 x 64)	1

FOOTNOTES

○ = 168-004-4 Handle Assembly Components

AIMCO also offers a complete line of standard & special adapters, bits, sockets and extensions.



When ordering spare parts, please specify tool type, part number and description.

10000 SE PINE, PORTLAND, OR 97216
503-254-6600 FAX 503-255-2615