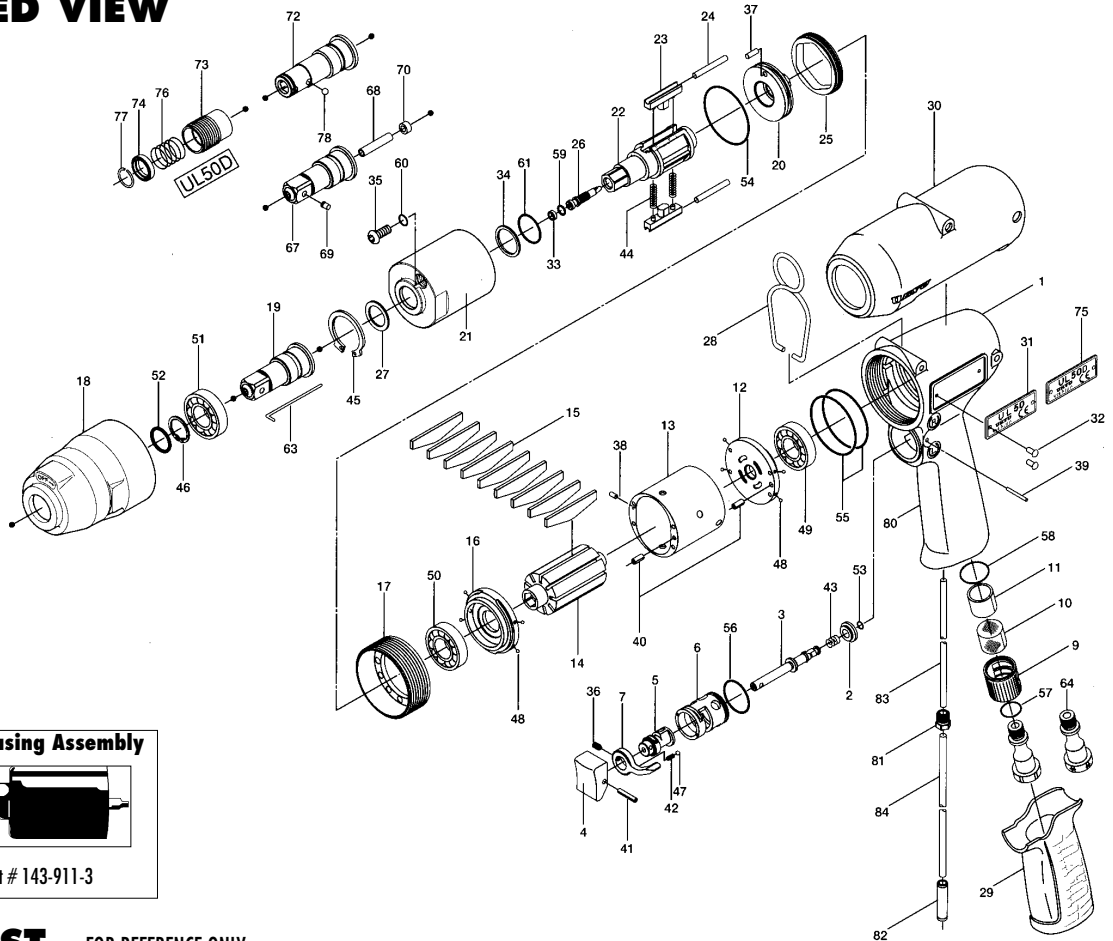
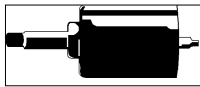


UL50(D) OIL-PULSE TOOLS

EXPLODED VIEW



Liner Casing Assembly



Part # 143-911-3

PARTS LIST — FOR REFERENCE ONLY

Index Number	Part Number	Description	Qty.	Index Number	Part Number	Description	Qty.	Index Number	Part Number	Description	Qty.
01	143-025-3	HANDLE	1	33	944-002-0	SUPPORTING RING (2.6X4.5X1)	1	68	891-559-1	PIPE	1
02	147-100-2	VALVE	1	34	944-212-0	SUPPORTING RING (12X16X1.5)	1	69	891-560-1	SOCKET SNAP PIN	1
03	147-104-2	VALVE ROD	1	35	945-942-0	HEXAGON ROUND HEAD BOLT (M4X6)	1	70	975-001-0	SPACER (6X2.8X3)	1
04	147-107-2	VALVE LEVER	1	36	952-106-0	ALLEN HEAD DOG POINT SCREW (M4X6)	1	PARTS FOR UL-50D			
05	147-210-2	REVERSE VALVE	1	37	970-145-0	PIN (H) (2.5X3.5)	1	72	158-350-6	DRIVER ANVIL	1
06	147-211-2	REVERSE VALVE BUSHING	1	38	971-102-0	PIN (2X3.8)	1	73	011-351-1	BIT SLEEVE	1
07	480-212-8	REVERSE LEVER	1	39	971-123-0	PIN (2X23)	1	74	011-352-1	BIT SPACER	1
09	147-780-3	EXHAUST STACK	1	40	973-008-0	ROLL PIN (2X8)	2	75	143-924-5	METAL TAG	1
10	147-042-2	SILENCER	1	41	973-014-0	ROLL PIN (2X14)	1	76	976-327-0	SPRING (13.5X11)	1
11	145-835-8	FILTER(K100)	1	42	976-006-0	SPRING (3X5)	1	77	978-117-0	SNAP RING (11.7X1.0)	1
12	147-285-2	REAR PLATE	1	43	976-457-0	SPRING (7X12)(0.9)	1	78	981-002-0	BALL (1/8)	1
13	143-286-3	CYLINDER	1	44	976-792-0	SPRING (3.5X21) (0.45) WPC	2	PARTS FOR (TM)-TYPE			
14	143-287-3	ROTOR	1	45	979-327-0	INNER SNAP RING (IRTW-28)	1	80	851-038-1	HANDLE	1
15	143-288-3	BLADE(PC)	9	46	979-356-0	INNER SNAP RING (ISTW-15)	1	81	850-610-1	CONNECTING SCREW	1
16	147-289-3	FRONT PLATE	1	47	981-002-0	BALL (1/8)	1	82	933-250-0	ONE-TOUCH CONNECTOR (SLS-04)	1
17	147-036-6	FRONT CASING CONNECTOR	1	48	981-045-0	BALL (1.5)	8	83	935-240-0	NYLON TUBE (18NY)	1
18	143-439-3	FRONT CASING	1	49	982-014-0	BALL BEARING (607)	1	84	935-350-0	POLYURETHANE HOSE (F1504)	1
19	143-454-3	SOCKET SPINDLE	1	50	982-902-0	BALL BEARING (6901)	1	ACCESSORIES			
20	143-901-3	REAR LINER PLATE	1	51	982-923-0	BALL BEARING (6902ZZ)	1	63	939-091-0	ALLEN WRENCH (1.5MM)	1
21	143-902-3	LINER	1	52	990-016-0	O-RING (P16)	1	FOOTNOTES			
22	143-319-3	ANVIL	1	53	990-306-0	O-RING (ARP-568-004)(H)	1	AIMCO also offers a complete line of standard & special adapters, bits, sockets and extensions.			
23	143-440-3	DRIVING BLADE	2	54	990-331-0	O-RING (JW1530-21)	1				
24	143-974-3	ROLLER (2.5X22)	2	55	990-337-0	O-RING (JW1530-27)	2				
25	143-906-3	LINER CASING COVER	1	56	990-912-0	O-RING (SNS-14)	1				
26	143-970-3	RELIEF VALVE	1	57	990-914-0	O-RING (SNS-16)	1				
27	178-327-9	ANVIL FRONT SPACER	1	58	990-916-0	O-RING (SNS-18)	1				
28	174-790-0	SUSPENSION BALL	1	59	990-970-0	O-RING (SNS-2)	1				
29	147-842-2	HANDLE COVER	1	60	990-971-0	O-RING (SNS-3) (NOK)	1				
30	143-840-3	CASING PROTECTOR	1	61	992-020-0	SU-RING(Q12)(NTN)	1				
31	143-924-3	METAL TAG	1	64	147-091-2	AIR INLET BUSHING	1				
32	930-205-0	SCREW (NO.0 X 2.6)	2	67	891-558-1	SOCKET SPINDLE ASSEMBLY (P)	1				

When ordering spare parts, please specify tool type, part number and description.

10000 SE PINE, PORTLAND, OR 97216
503-254-6600 FAX 503-255-2615

